

VISUAL APPROACH CHART - ICAO

AD ELEV 504 FEET

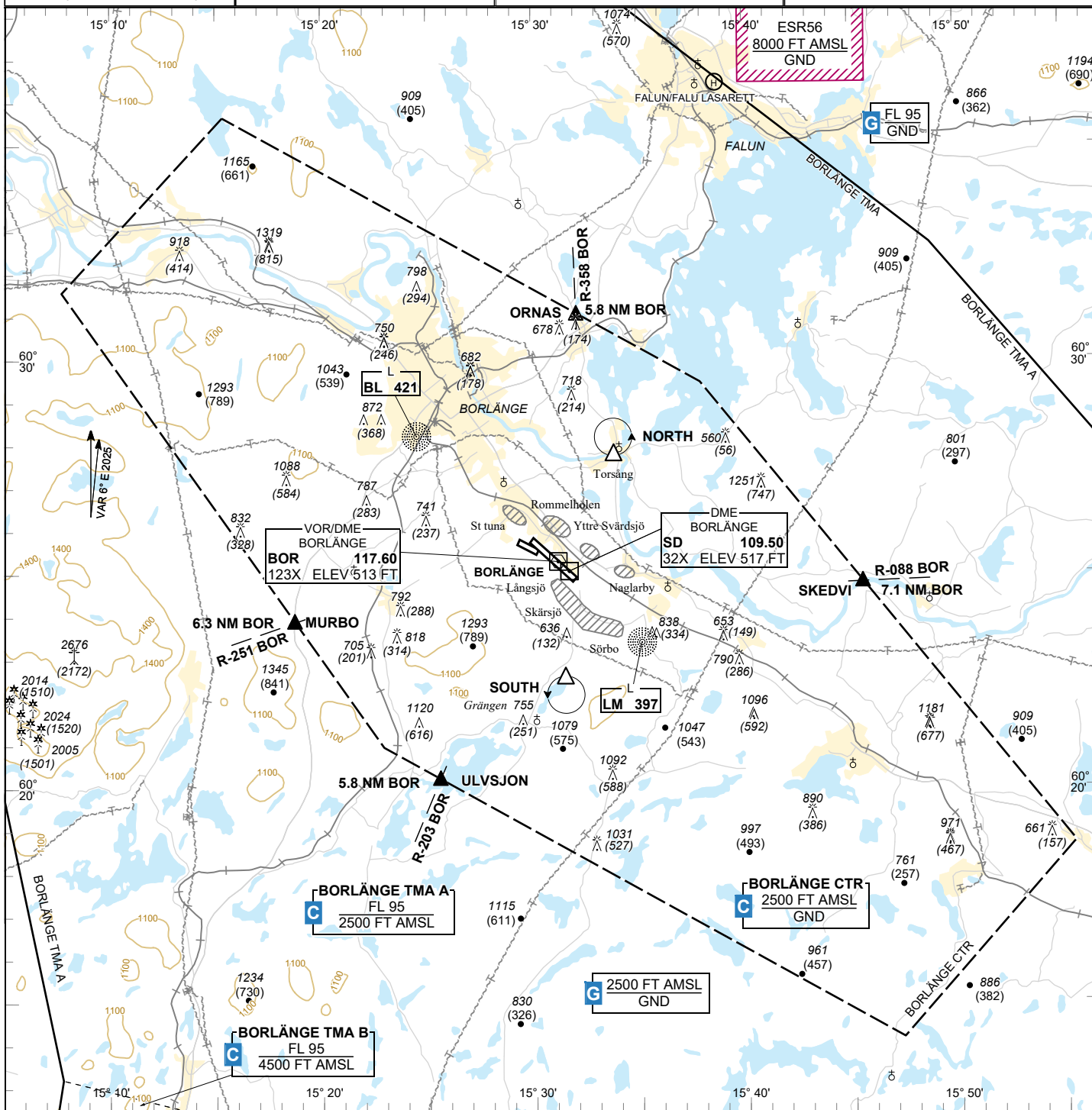
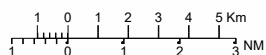
ELEV and ALT in ft
HGT in ft above AD ELEV

TA 5000 AMSL

BORLÄNGE TOWER 127.305

BORLÄNGE SWEDEN

1:250000



CHANGE: ESR209A and ES209B withdrawn. Editorial (Entry/Exit point distances)

Communication failure

- 1 SQUAWK 7600
- 2 Enter CTR via ULVSJON – Holding SOUTH at or below 2500 ft AMSL to traffic circuit. Transmit blind your intentions.
- 3 Flash LDG-lights and watch TWR for optical signals.

Remark

Note: Noise sensitive area should be avoided below 2000 ft AMSL.

MISCELLANEOUS

During APCH 32 risk for mix-up and LDG on other RWY short of THR 32

RWY NR	THR ELEV	PAPI (MEHT)
14	504 ft	Left/3.25° (65 ft)
32	493.0 ft	Left/3.00° (61 ft)

Entry / exit point

ORNAS	603103N 0153204E
SKEDVI	602447N 0154531E
ULVSJON	602013N 0152533E
MURBO	602353N 0151843E

Legend

See GEN 2.3

Holding

- NORTH:** Hold north of bridge at Torsång, north of point 602747N 0153348E
- SOUTH:** Hold south of northern part of lake Grängen, south of point 602235N 0153128E