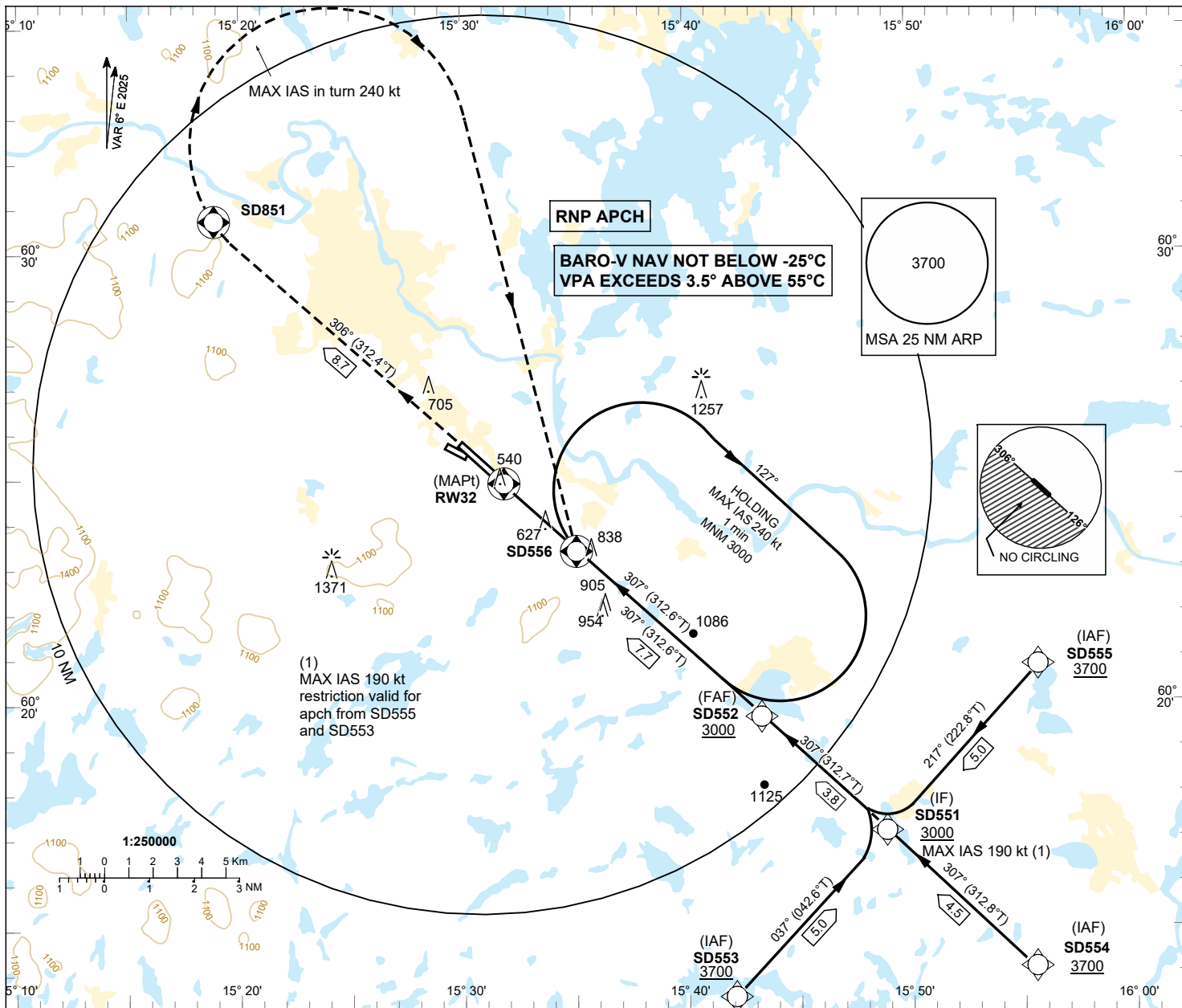


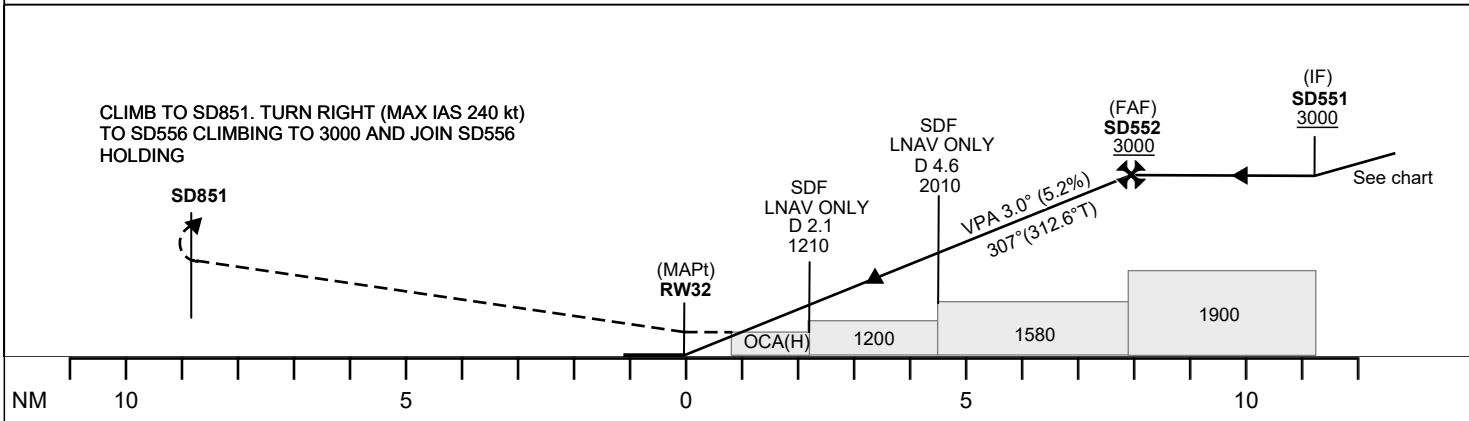
INSTRUMENT  
APPROACH  
CHART - ICAO

**THR ELEV 493.0 ft AD ELEV 504 ft**  
OCH are related to THR  
Circling OCH are related to AD ELEV  
BRG are MAG (True)  
ALT, HGT and ELEV in ft

BORLÄNGE TOWER 127.305



TA 5000 ft AMSL RDH 50 ft



Cat of ACFT	OCA(H)			
	A	B	C	D
LPV	641(148)	651(158)	663(170)	676(183)
LNAV/VNAV	757(264)	769(276)	778(285)	788(295)
LNAV	880(390)			
Circling NE RWY	1010(510)	1150(650)	1350(850)	1660(1160)

Final approach	Distance FAF-MAPt 7.7 NM						
	2	3	4	5	6	7	
Dist to RWY32 NM							
ALT	1180	1500	1820	2140	2460	2780	
GS	80	100	120	140	160	180	
Rate of descent	425	530	635	745	850	955	

CHANGE: ESR209A and ESR209B with drawn

**BORLÄNGE**  
**RNP RWY 32****RNP RWY 32 via SD555**

Path Term	Waypoint Identifier	Fly-over	Course °M(°T)	Dist (NM)	Turn Dir	Rest Alts (ft AMSL)	Speed Limits (kt)	VPA/RDH (°/ft)	Rec Navaid	Navigation Specification
IF	SD555	-	-	-	-	+3700	-	-	-	RNP APCH
TF	SD551	-	217°(222.8°)	5.0	-	+3000	-190	-	-	RNP APCH

**RNP RWY 32 via SD554**

Path Term	Waypoint Identifier	Fly-over	Course °M(°T)	Dist (NM)	Turn Dir	Rest Alts (ft AMSL)	Speed Limits (kt)	VPA/RDH (°/ft)	Rec Navaid	Navigation Specification
IF	SD554	-	-	-	-	+3700	-	-	-	RNP APCH
TF	SD551	-	307°(312.8°)	4.5	-	+3000	-	-	-	RNP APCH

**RNP RWY 32 via SD553**

Path Term	Waypoint Identifier	Fly-over	Course °M(°T)	Dist (NM)	Turn Dir	Rest Alts (ft AMSL)	Speed Limits (kt)	VPA/RDH (°/ft)	Rec Navaid	Navigation Specification
IF	SD553	-	-	-	-	+3700	-	-	-	RNP APCH
TF	SD551	-	037°(042.6°)	5.0	-	+3000	-190	-	-	RNP APCH

Path Term	Waypoint Identifier	Fly-over	Course °M(°T)	Dist (NM)	Turn Dir	Rest Alts (ft AMSL)	Speed Limits (kt)	VPA/RDH (°/ft)	Rec Navaid	Navigation Specification
IF	SD551	-	-	-	-	+3000	-	-	-	RNP APCH
TF	SD552	-	307°(312.7°)	3.8	-	+3000	-	-	-	RNP APCH
TF	RW32	Y	307°(312.6°)	7.7	-	@543	-	-3.0/50	-	RNP APCH
TF	SD851	Y	306°(312.4°)	8.7	-	-	-	-	-	RNP APCH
DF	SD556	Y	-	-	R	+3000	-240	-	-	RNP APCH

Path Term	Waypoint Identifier	Fly-over	Course °M(°T)	Dist (NM)	Turn Dir	Rest Alts (ft AMSL)	Speed Limits (kt)	VPA/RDH (°/ft)	Rec Navaid	Navigation Specification
HM	SD556	Y	307°(312.6°)	-	R	+3000	-240	-	-	RNAV 1

## FAS Data Block

## RNP RWY 32

## Input data

Operation Type	0
SBAS Provider	1 (EGNOS)
Airport Identifier	ESSD
Runway	32
Runway Letter	0 (None)
Approach Performance Designator	0
Route Indicator	
Reference Path Data Selector	0
Reference Path Identifier	E32A
LTP/FTP Latitude	602454.3190N
LTP/FTP Longitude	0153151.0855E
LTP/FTP Ellipsoidal Height (metres)	179.1
FPAP Latitude	602546.1370N
Delta FPAP Latitude (seconds)	51.8180
FPAP Longitude	0152956.3890E
Delta FPAP Longitude (seconds)	-114.6965
Threshold Crossing Height	50.0
TCH Units Selector	0 (feet)
Glidepath Angle (degrees)	3.00
Course Width (metres)	105.00
Length Offset (metres)	64
HAL (metres)	40.0
VAL (metres)	35.0

## Output data

Data Block	10 04 13 13 05 20 00 00 01 32 33 05 5E 66 ED 19 5B 45 AA 06 FF 1A D4 94 01 EF 7F FC F4 01 2C 01 64 08 C8 AF 70 AC 7A 75
Calculated CRC Value	70AC7A75

## Required Additional Data

ICAO Code	ES
LTP/FTP Orthometric Height (metres)	150.3