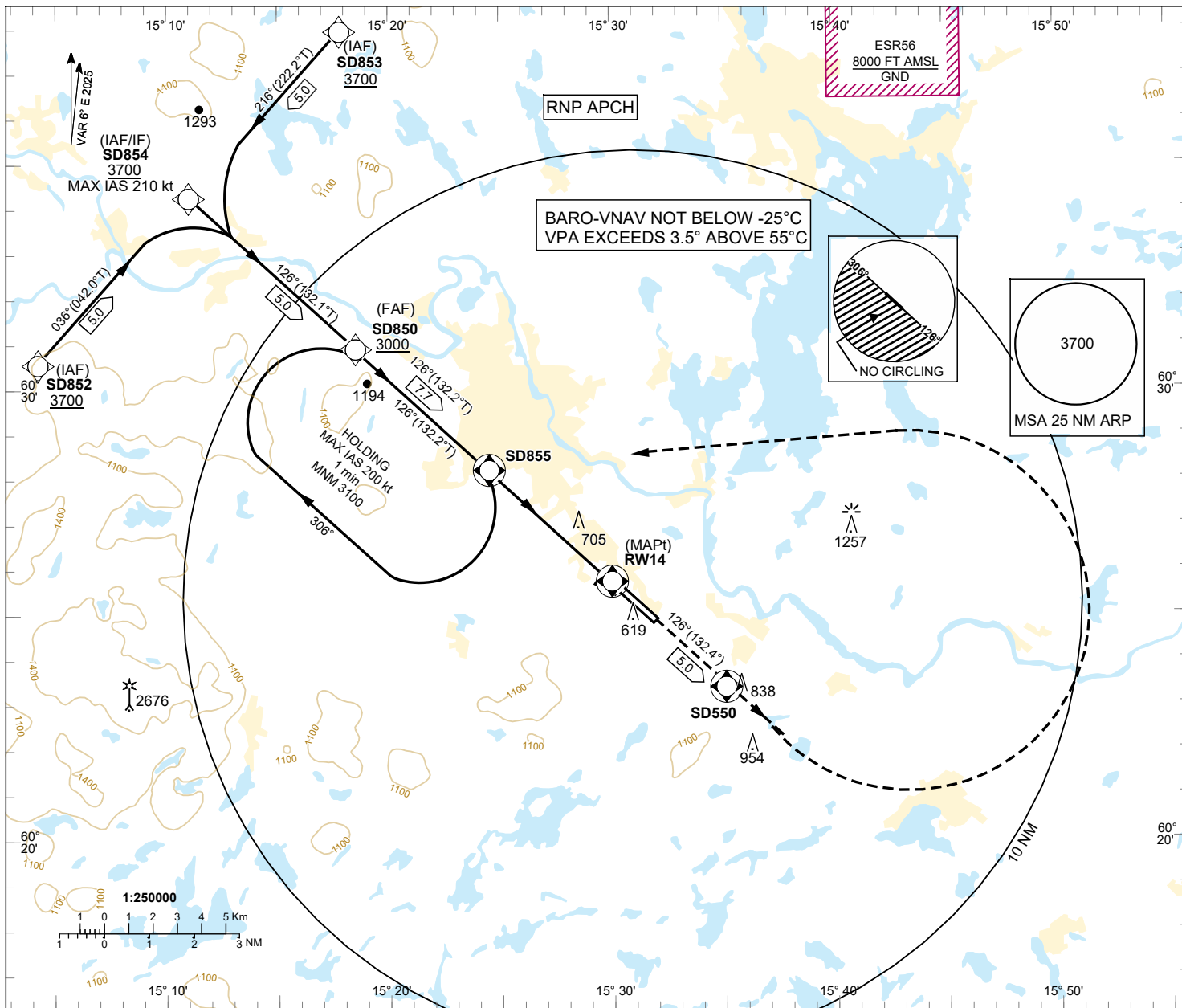


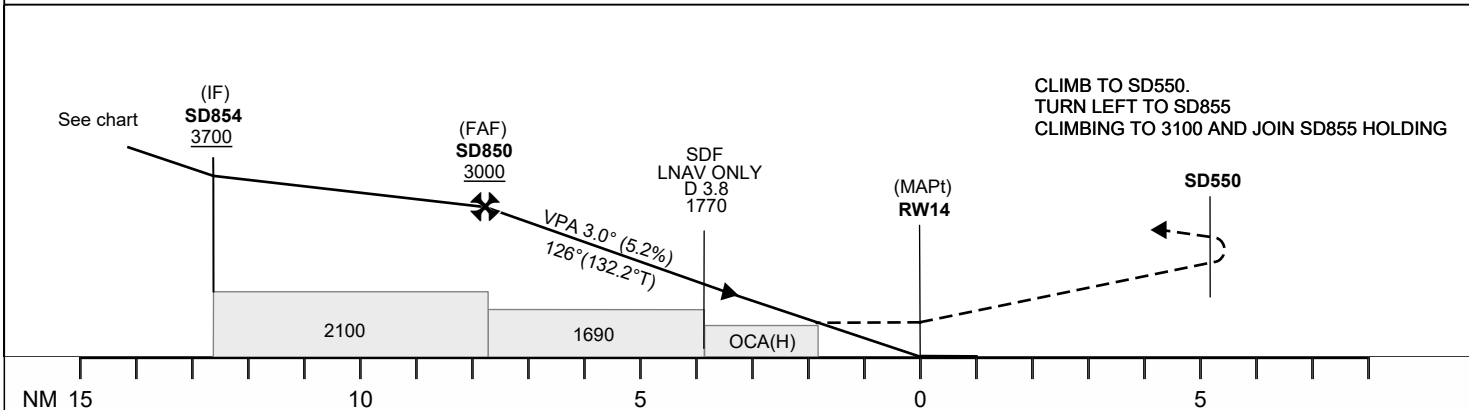
INSTRUMENT
APPROACH
CHART - ICAO

THR ELEV 504 ft AD ELEV 504 ft
OCH are related to THR
Circling OCH are related to AD ELEV
BRG are MAG (True)
ALT, HGT and ELEV in ft

BORLÄNGE TOWER 127.305



TA 5000 ft AMSL RDH 50 ft



Cat of ACFT	OCA(H)			
	A	B	C	D
LPV	749(245)	762(258)	770(266)	780(276)
LNAV/VNAV	824(320)	835(331)	843(339)	855(351)
LNAV	930(430)			
Circling NE RWY	1010(510)	1150(650)	1350(850)	1660(1160)

Final approach	Distance FAF-MAPt 7.7 NM					
	7	6	5	4	3	2
Dist to RW14 NM	7	6	5	4	3	2
ALT	2790	2470	2150	1830	1510	1200
GS	kt	80	100	120	140	160
Rate of descent	ft/min	425	530	635	745	850
		955				

CHANGE: ESR209A and ESR209B withdrawn

BORLÄNGE
RNP RWY 14**RNP RWY 14 via SD852**

Path Term	Waypoint Identifier	Fly-over	Course °M(°T)	Dist (NM)	Turn Dir	Rest Alts (ft AMSL)	Speed Limits (kt)	VPA/ RDH (°/ft)	Rec Navaid	Navigation Specification
IF	SD852	-	-	-	-	+3700	-	-	-	RNP APCH
TF	SD854	-	036°(042.0°)	5.0	-	+3700	-210	-	-	RNP APCH

RNP RWY 14 via SD853

Path Term	Waypoint Identifier	Fly-over	Course °M(°T)	Dist (NM)	Turn Dir	Rest Alts (ft AMSL)	Speed Limits (kt)	VPA/ RDH (°/ft)	Rec Navaid	Navigation Specification
IF	SD853	-	-	-	-	+3700	-	-	-	RNP APCH
TF	SD854	-	216°(222.2°)	5.0	-	+3700	-210	-	-	RNP APCH

Path Term	Waypoint Identifier	Fly-over	Course °M(°T)	Dist (NM)	Turn Dir	Rest Alts (ft AMSL)	Speed Limits (kt)	VPA/ RDH (°/ft)	Rec Navaid	Navigation Specification
IF	SD854	-	-	-	-	+3700	-210	-	-	RNP APCH
TF	SD850	-	126°(132.1°)	5.0	-	+3000	-	-	-	RNP APCH
TF	RW14	Y	126°(132.2°)	7.7	-	@553	-	-3.0/50	-	RNP APCH
TF	SD550	Y	126°(132.4°)	5.0	-	-	-	-	-	RNP APCH
DF	SD855	Y	-	-	L	+3100	-	-	-	RNP APCH

Path Term	Waypoint Identifier	Fly-over	Course °M(°T)	Dist (NM)	Turn Dir	Rest Alts (ft AMSL)	Speed Limits (kt)	VPA/ RDH (°/ft)	Rec Navaid	Navigation Specification
HM	SD855	Y	126°(132.2°)	-	R	+3100	-200	-	-	RNAV 1

FAS Data Block

Input data

Operation Type	0
SBAS Provider	1 (EGNOS)
Airport Identifier	ESSD
Runway	14
Runway Letter	0 (None)
Approach Performance Designator	0
Route Indicator	
Reference Path Data Selector	0
Reference Path Identifier	E14A
LTP/FTP Latitude	602544.7330N
LTP/FTP Longitude	0152959.5145E
LTP/FTP Ellipsoidal Height (metres)	182.5
FPAP Latitude	602454.3190N
Delta FPAP Latitude (seconds)	-50.4140
FPAP Longitude	0153151.0855E
Delta FPAP Longitude (seconds)	111.5710
Threshold Crossing Height	50.0
TCH Units Selector	0 (feet)
Glidepath Angle (degrees)	3.00
Course Width (metres)	105.00
Length Offset (metres)	0
HAL (metres)	40.0
VAL (metres)	50.0

Output data

Data Block	10 04 13 13 05 0E 00 00 01 34 31 05 3A F0 EE 19 B5 DD A6 06 21 1B 24 76 FE A6 67 03 F4 01 2C 01 64 00 C8 FA 6E D6 4C 55
Calculated CRC Value	6ED64C55

Required Additional Data

ICAO Code	ES
LTP/FTP Orthometric Height (metres)	153.5