

VISUAL APPROACH CHART - ICAO

1:250000



AD ELEV 355 FEET

ELEV and ALT in ft
HGT in ft above AD ELEV

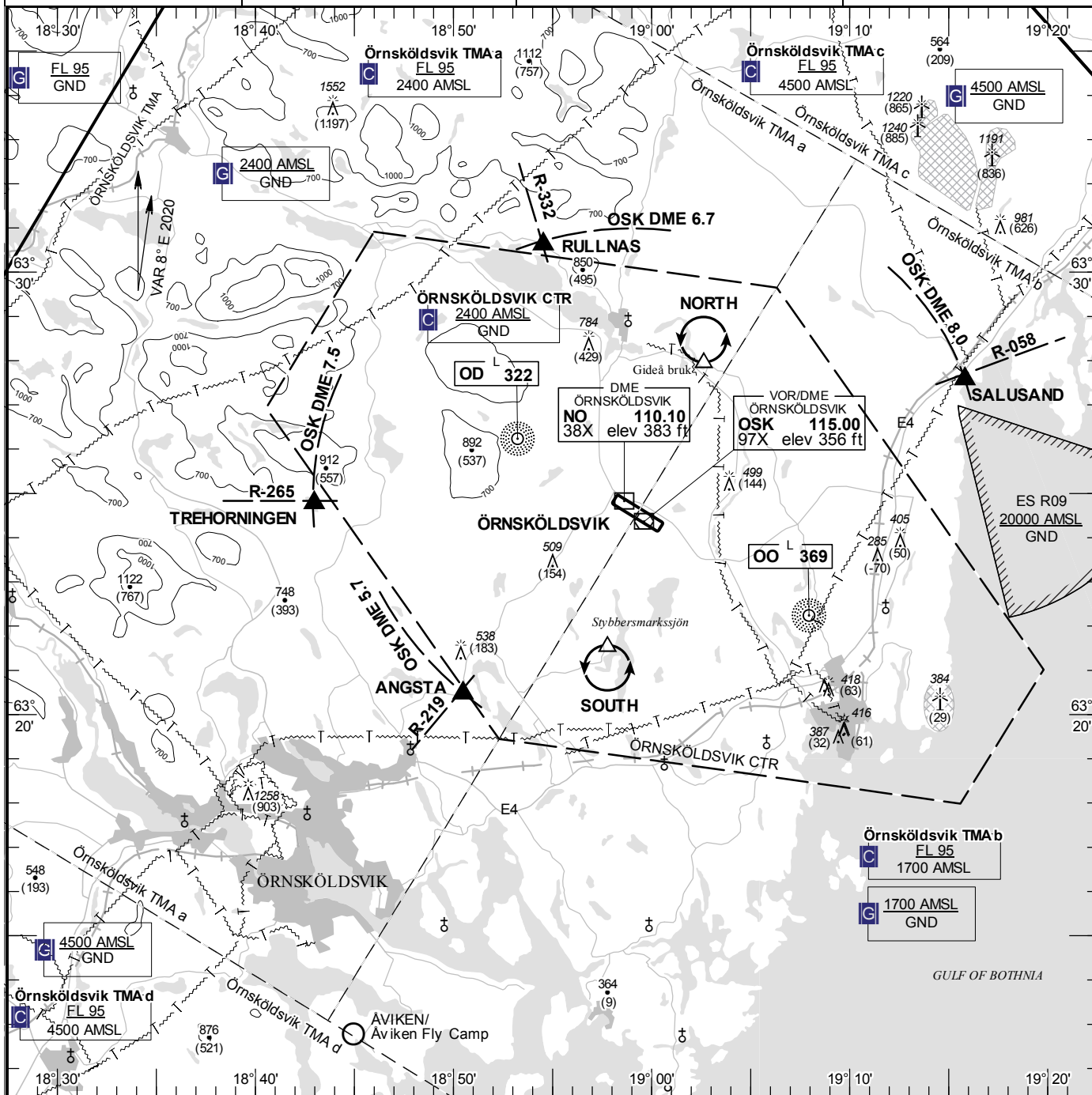
TA 5000 AMSL

ÖVIK TOWER

122.255

AD 2 ESNO 6-1

ÖRNSKÖLDSVIK SWEDEN



Communication failure

- 1 SQUAWK 7600
- 2 Enter CTR via ANGSTA – Holding SOUTH at or below 1000 ft AMSL. Transmit blind your intentions.
- 3 Flash LDG-lights and watch for optical signals from signalling lamp from the camera installation placed on top of the remote tower (position marked R-TWR on AD Chart).

RWY NR	THR ELEV	PAPI (MEHT)
12	354.1 ft	Left/3.25° (57 ft)
30	332 ft	Left/3.00° (25 ft)

Entry / exit point

RULLNAS	633037N 0185432E
SALUSAND	632734N 0191549E
ANGSTA	632028N 0185029E
TREHORNINGEN	632446N 0184258E

Holding

- NORTH:** Hold over Gideå bruk, north of point 632756N 0190237E
- SOUTH:** Hold over Stybbersmark, south of point 632131N 0185746E

Legend
See GEN 2.3

Remark
NIL