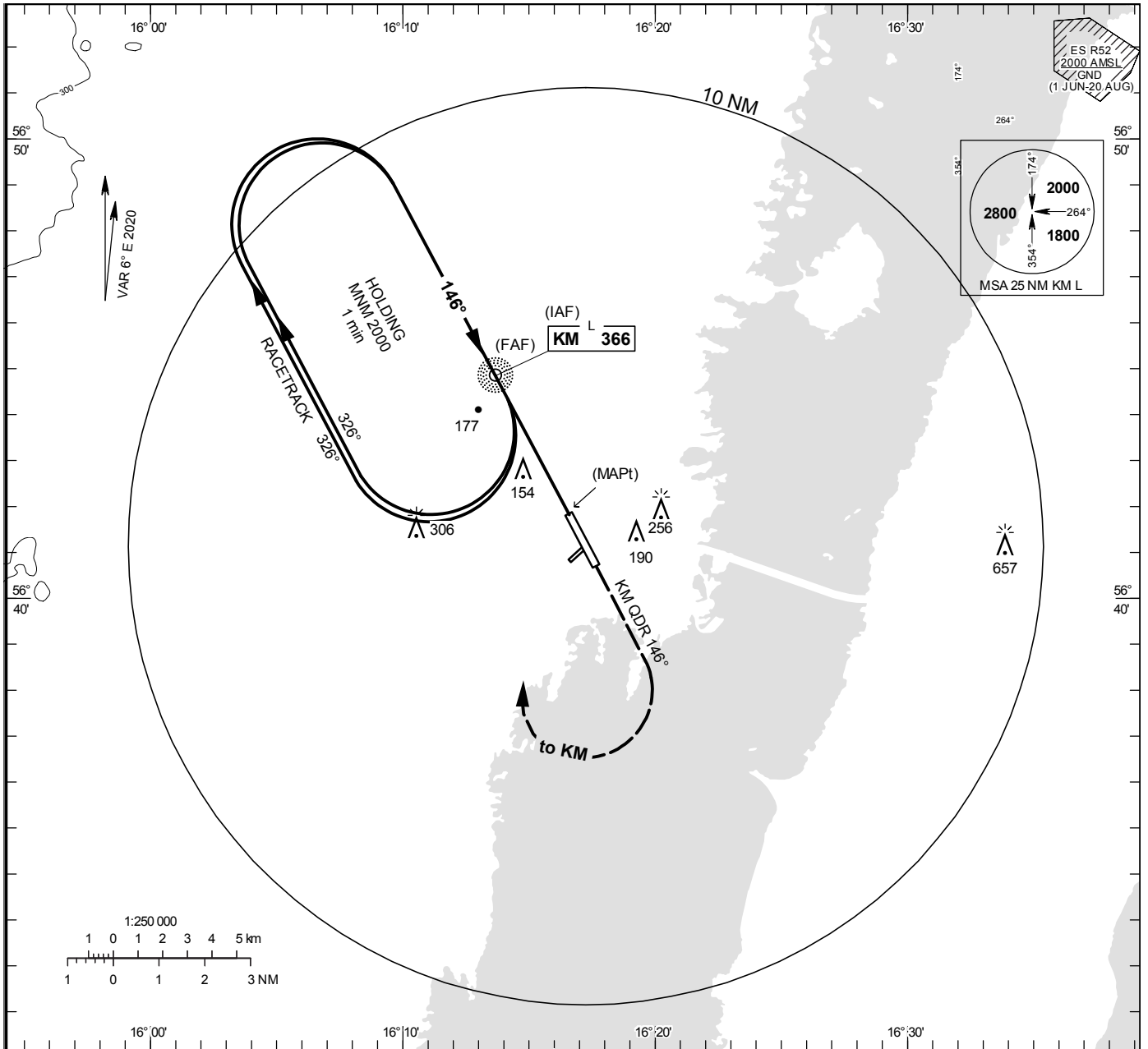


**INSTRUMENT  
APPROACH  
CHART – ICAO**

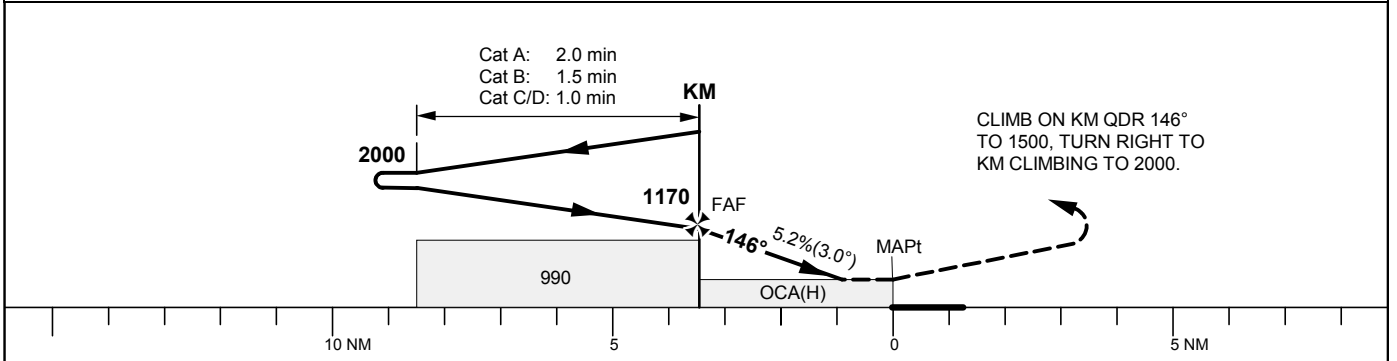
**THR ELEV 18.0 ft, AD ELEV 18 ft**  
 OCH are related to THR.  
 Circling OCH are related to AD ELEV.  
 BRG are MAG  
 ALT, HGT and ELEV in ft.

KALMAR TOWER 130.805

**NDB RWY 16**



**TA 5000 ft AMSL** Circling MAX IAS 200 kt



OCA (H)					Final approach			Distance FAF-MAPt 3.4 NM				
Cat of ACFT	A	B	C	D	DME KAL NM	4		3		2		
Straight-in Approach	430(420)				ALT	1110		800		480		
Circling	490(480)	560(550)	700(690)	700(690)	GS	kt	80	100	120	140	160	180
					Time	min:s	2:35	2:04	1:43	1:29	1:17	1:09
					Rate of descent	ft/min	425	530	635	745	850	955