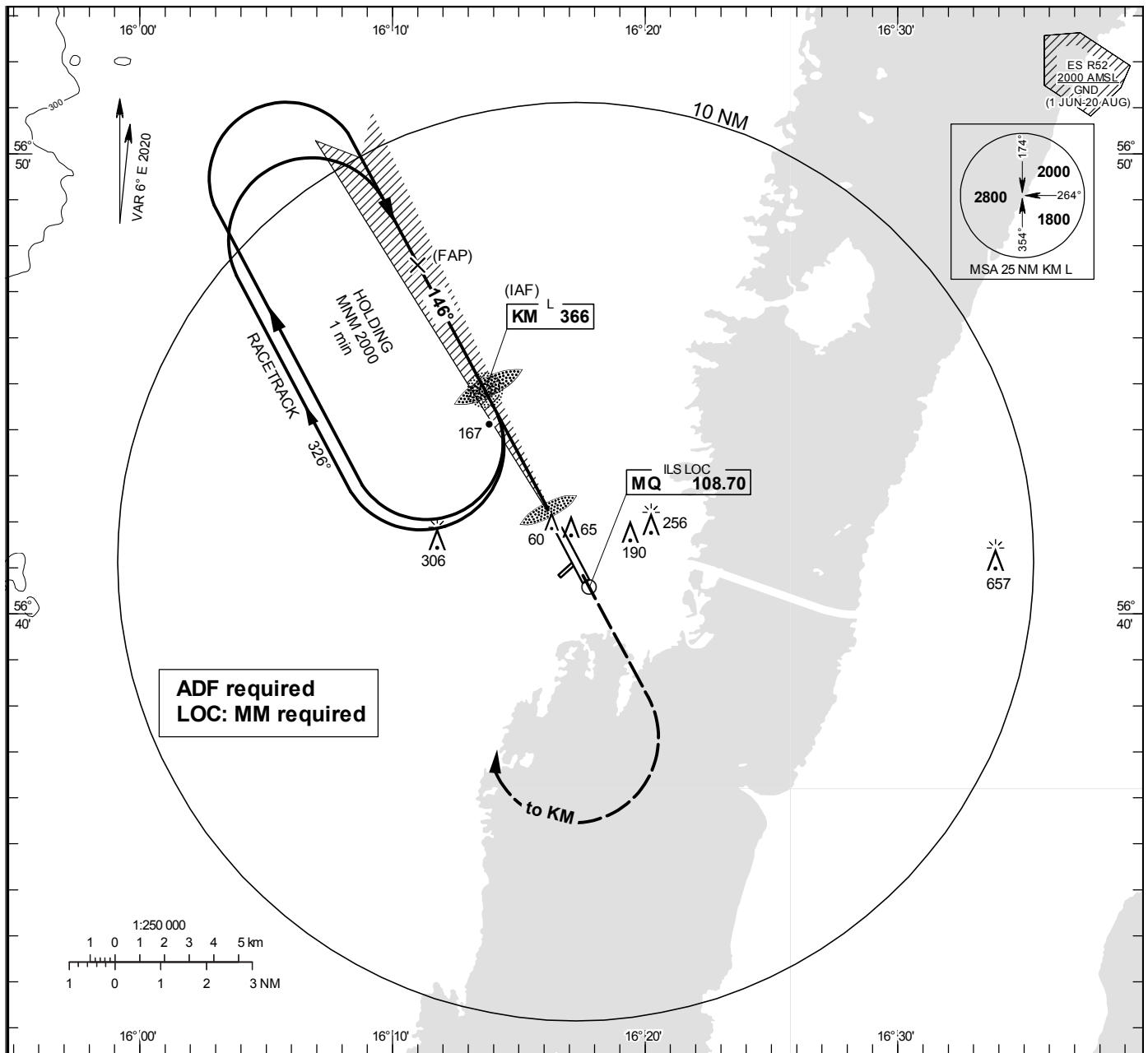


ILS y or LOC y RWY 16

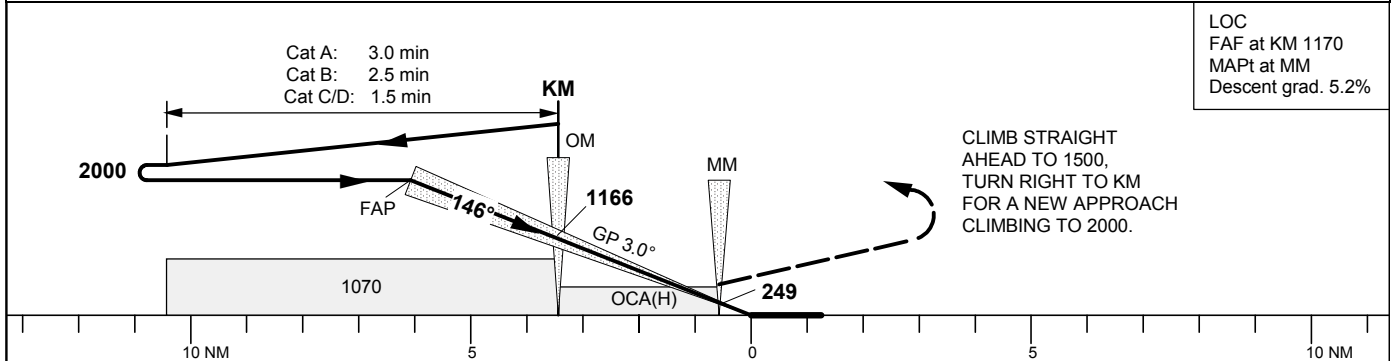
KALMAR TOWER 130.805

THR ELEV 18.0 ft, AD ELEV 18 ft
 OCH are related to THR.
 Circling OCH are related to AD ELEV.
 BRG are MAG
 ALT, HGT and ELEV in ft.

INSTRUMENT
 APPROACH
 CHART – ICAO



TA 5000 ft AMSL RDH 50.2 ft Circling MAX IAS 200 kt *Timing not authorized for defining the MAPt



Cat of ACFT	OCA (H)				Final approach DME KAL NM	LOC Distance FAF-MAPt 2.9 NM*							
	A	B	C	D		4		3		2			
Straight-in Approach	CAT I	162(144)	171(153)	183(165)	195(177)	ALT	1110						
	LOC	420(410)				GS	kt	80	100	120	140	160	180
Circling		490(480)	560(550)	700(690)	700(690)	Time	min:s	2:09	1:44	1:26	1:14	1:05	0:58
						Rate of descent	ft/min	425	530	635	745	850	955