

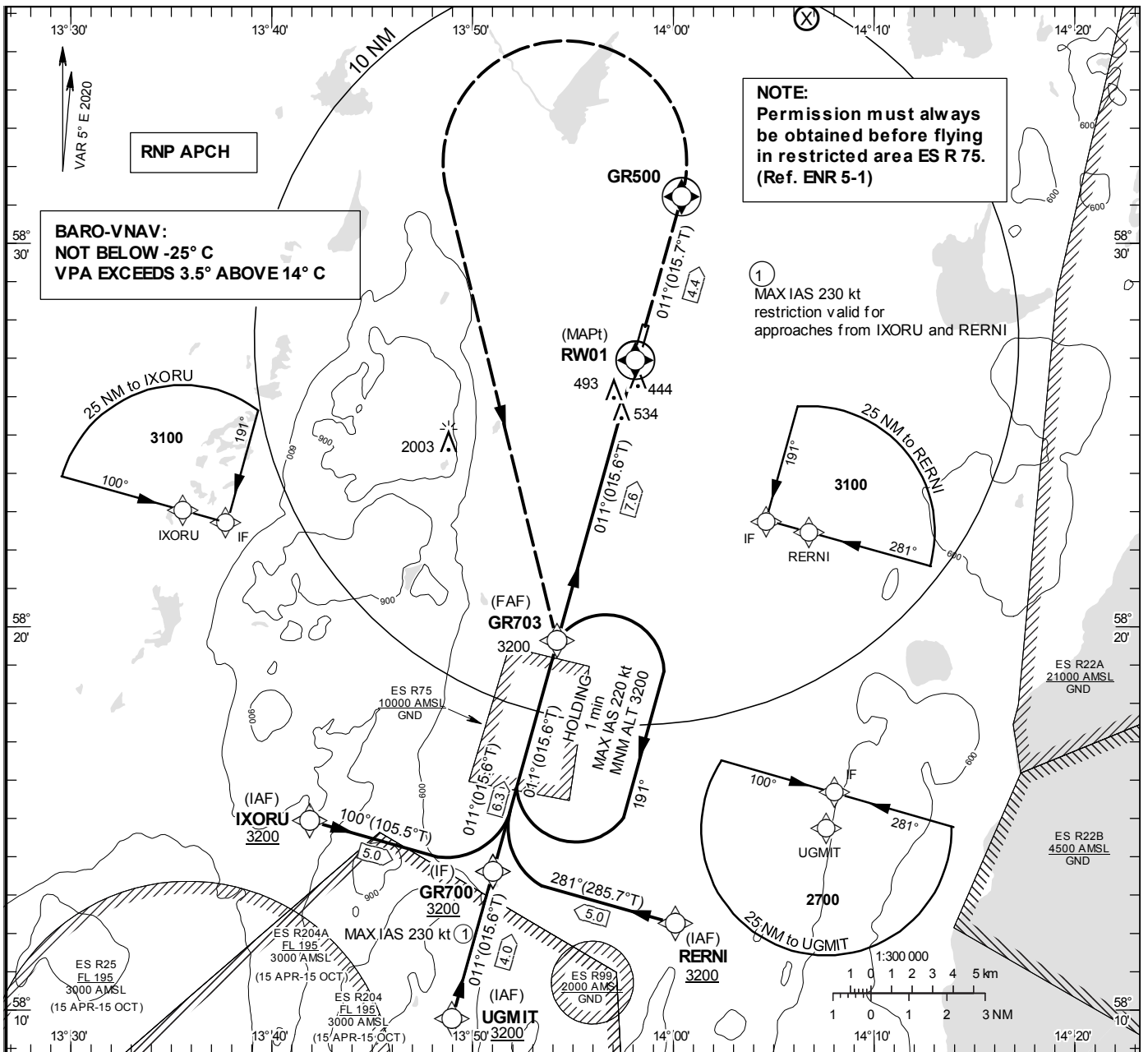
**INSTRUMENT  
APPROACH  
CHART – ICAO**

**THR ELEV 324 ft, AD ELEV 324 ft**  
 OCH are related to THR.  
 BRG are MAG (True).  
 ALT, HGT and ELEV in ft.

SKÖVDE INFORMATION 122.330

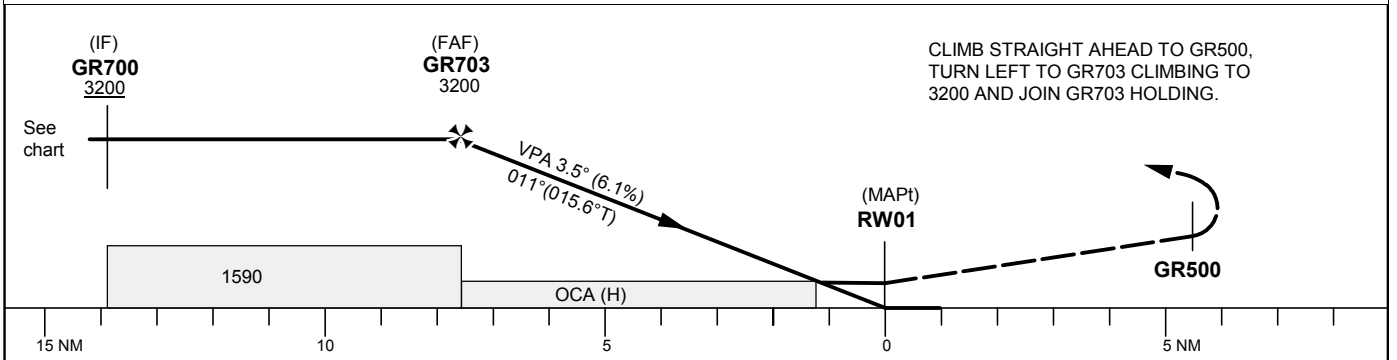
**RNP RWY 01**

EGNOS Ch 64231 E01A



TA 5000 ft AMSL

RDH 50 ft



Cat of ACFT	OCA (H)			Final approach Dist to RWY 01	Distance FAF-MAPt 7.6 NM					
	A	B	C		7	6	5	4	3	2
LPV	580 (256)	594 (270)	604 (280)	ALT	2980	2600	2230	1860	1490	1120
LNAV/VNAV	629 (305)	645 (321)	657 (333)	GS	kt	80	100	120	140	160
LNAV	790 (470)			Rate of descent	ft/min	495	620	745	865	1115

## RNP RWY 01 via IXORU

Path Desc	Waypoint Identifier	Fly-over	Course °M(°T)	Dist (NM)	Turn Dir	Altitude	Speed	VPA/RDH	Rec Navaid	Navigation Specification
IF	IXORU	-	-	-	-	-	-	-	-	RNP APCH
TF	GR700	-	100°(105.5°)	5.0	-	+3200	-230	-	-	RNP APCH

## RNP RWY 01 via UGMIT

Path Desc	Waypoint Identifier	Fly-over	Course °M(°T)	Dist (NM)	Turn Dir	Altitude	Speed	VPA/RDH	Rec Navaid	Navigation Specification
IF	UGMIT	-	-	-	-	-	-	-	-	RNP APCH
TF	GR700	-	011°(015.6°)	4.0	-	+3200	-	-	-	RNP APCH

## RNP RWY 01 via RERNI

Path Desc	Waypoint Identifier	Fly-over	Course °M(°T)	Dist (NM)	Turn Dir	Altitude	Speed	VPA/RDH	Rec Navaid	Navigation Specification
IF	RERNI	-	-	-	-	-	-	-	-	RNP APCH
TF	GR700	-	281°(285.7°)	5.0	-	+3200	-230	-	-	RNP APCH

Path Desc	Waypoint Identifier	Fly-over	Course °M(°T)	Dist (NM)	Turn Dir	Altitude	Speed	VPA/RDH	Rec Navaid	Navigation Specification
IF	GR700	-	-	-	-	+3200	-	-	-	RNP APCH
TF	GR703	-	011°(015.6°)	6.3	-	@3200	-	-	-	RNP APCH
TF	RW01	Y	011°(015.6°)	7.6	-	@374	-	-3.5/50	-	RNP APCH
TF	GR500	Y	011°(015.7°)	4.4	-	-	-	-	-	RNP APCH
DF	GR703	Y	-	-	L	+3200	-	-	-	RNP APCH

Path Desc	Waypoint Identifier	Fly-over	Course °M(°T)	Dist (NM)	Turn Dir	Altitude	Speed	VPA/RDH	Rec Navaid	Navigation Specification
HM	GR703	Y	011°(015.6°)	-	R	+3200	-220	-	-	RNP 1

## FAS Data Block

## RNP RWY 01

## Inputdata

OperationType	0
SBASProvider	1 (EGNOS)
AirportIdentifier	ESGR
Runway	01
RunwayLetter	0 (None)
ApproachPerformanceDesignator	0
RouteIndicator	
ReferencePathDataSelector	0
ReferencePathIdentifier	E01A
LTP/FTPLatitude	582655.9605N
LTP/FTPLongitude	0135806.9685E
LTP/FTPEllipsoidalHeight(metres)	130.1
FPAPLatitude	582749.9685N
DeltaFPAPLatitude(seconds)	54.0080
FPAPLongitude	0135835.9580E
DeltaFPAPLongitude(seconds)	28.9895
ThresholdCrossingHeight	50.0
TCHUnitsSelector	0 (feet)
GlidepathAngle(degrees)	3.50
CourseWidth(metres)	105.00
LengthOffset(metres)	0
HAL(metres)	40.0
VAL(metres)	50.0

## Outputdata

DataBlock	10 12 07 13 05 01 00 00 01 31 30 05 B1 62 15 19 F1 A2 FE 05 15 19 F0 A5 01 7B E2 00 F4 01 5E 01 64 00 C8 FA 3F 29 EC EA
CalculatedCRC Value	3F29ECEA

## RequiredAdditionalData

ICAOCode	ES
LTP/FTPOrthometricHeight(metres)	98.9