

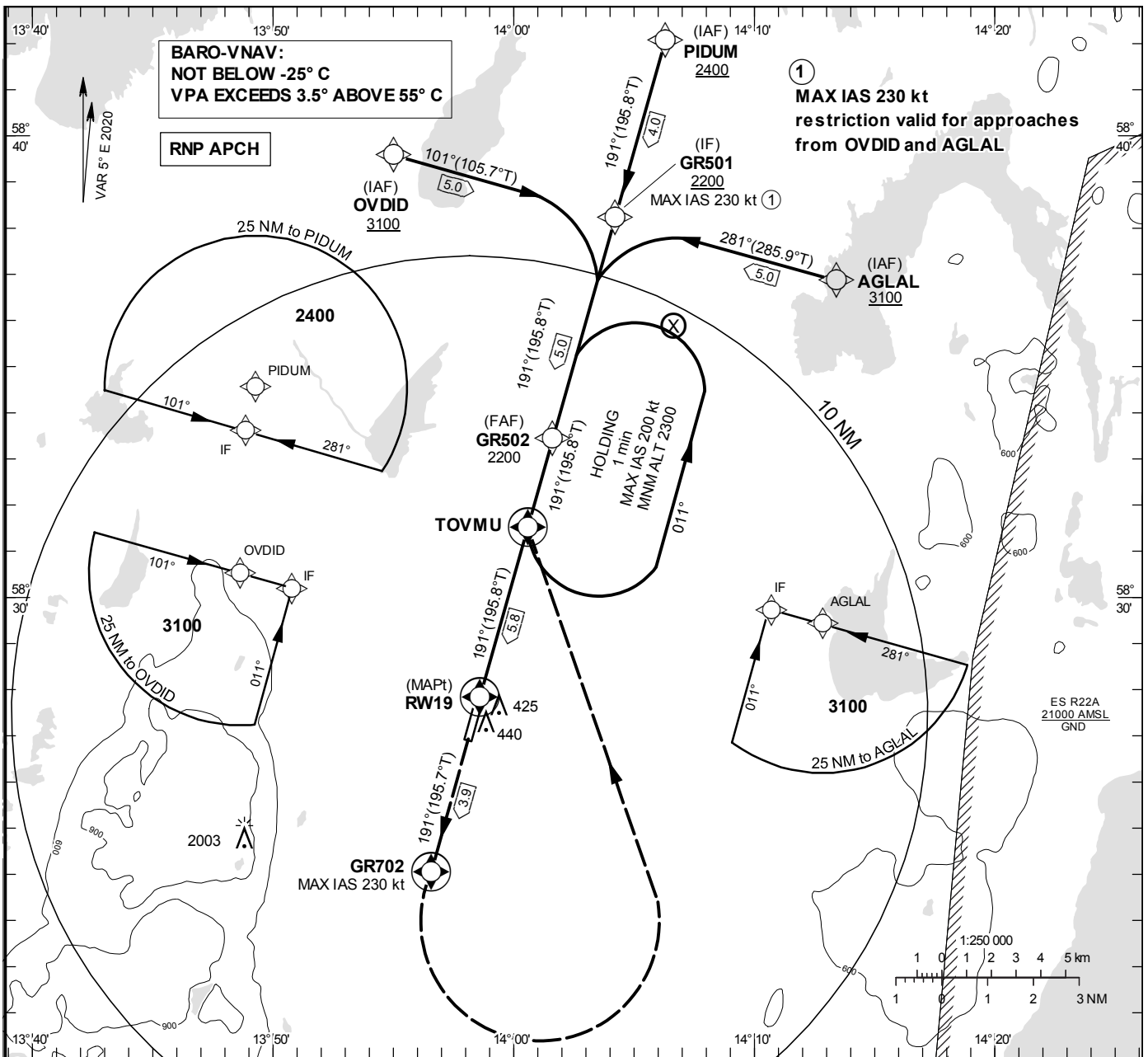
**INSTRUMENT
APPROACH
CHART – ICAO**

THR ELEV 295.8 ft, AD ELEV 324 ft
 OCH are related to THR.
 BRG are MAG (True).
 ALT, HGT and ELEV in ft.

SKÖVDE INFORMATION 122.330

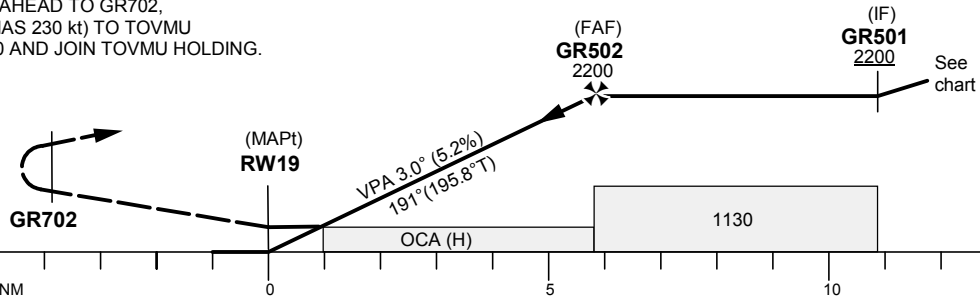
RNP RWY 19

EGNOS Ch 69760 E19A



TA 5000 ft AMSL RDH 50 ft

CLIMB STRAIGHT AHEAD TO GR702.
 TURN LEFT (MAX IAS 230 kt) TO TOVMU
 CLIMBING TO 2300 AND JOIN TOVMU HOLDING.



Cat of ACFT	OCA (H)			Final approach Dist to RWY 19	Distance FAF-MAPt 5.8 NM					
	A	B	C		5	4	3	2	1	
LPV	570 (275)	582 (287)	590 (295)	ALT	1940	1620	1310	980	660	
LNAV/VNAV	555 (260)	567 (272)	576 (281)	GS	kt	80	100	120	140	160
LNAV	680 (390)			Rate of descent	ft/min	425	530	635	745	850

RNP RWY 19 via OVDID

Path Desc	Waypoint Identifier	Fly-over	Course °M(°T)	Dist (NM)	Turn Dir	Altitude	Speed	VPA/RDH	Rec Navaid	Navigation Specification
IF	OVDID	-	-	-	-	+3100	-	-	-	RNP APCH
TF	GR501	-	101°(105.7°)	5.0	-	+2200	-230	-	-	RNP APCH

RNP RWY 19 via PIDUM

Path Desc	Waypoint Identifier	Fly-over	Course °M(°T)	Dist (NM)	Turn Dir	Altitude	Speed	VPA/RDH	Rec Navaid	Navigation Specification
IF	PIDUM	-	-	-	-	+2400	-	-	-	RNP APCH
TF	GR501	-	191°(195.8°)	4.0	-	+2200	-	-	-	RNP APCH

RNP RWY 19 via AGLAL

Path Desc	Waypoint Identifier	Fly-over	Course °M(°T)	Dist (NM)	Turn Dir	Altitude	Speed	VPA/RDH	Rec Navaid	Navigation Specification
IF	AGLAL	-	-	-	-	+3100	-	-	-	RNP APCH
TF	GR501	-	281°(285.9°)	5.0	-	+2200	-230	-	-	RNP APCH

Path Desc	Waypoint Identifier	Fly-over	Course °M(°T)	Dist (NM)	Turn Dir	Altitude	Speed	VPA/RDH	Rec Navaid	Navigation Specification
IF	GR501	-	-	-	-	+2200	-	-	-	RNP APCH
TF	GR502	-	191°(195.8°)	5.0	-	@2200	-	-	-	RNP APCH
TF	RW19	Y	191°(195.8°)	5.8	-	@346	-	-3.0/50	-	RNP APCH
TF	GR702	Y	191°(195.7°)	3.9	-	-	-230	-	-	RNP APCH
DF	TOVMU	Y	-	-	L	+2300	-	-	-	RNP APCH

Path Desc	Waypoint Identifier	Fly-over	Course °M(°T)	Dist (NM)	Turn Dir	Altitude	Speed	VPA/RDH	Rec Navaid	Navigation Specification
HM	TOVMU	Y	191°(195.8°)	-	L	+2300	-200	-	-	RNP 1

FAS Data Block

RNP RWY 19

Input data

OperationType	0
SBASProvider	1 (EGNOS)
AirportIdentifier	ESGR
Runway	19
RunwayLetter	0 (None)
ApproachPerformanceDesignator	0
RouteIndicator	
ReferencePathDataSelector	0
ReferencePathIdentifier	E19A
LTP/FTPLatitude	582749.9685N
LTP/FTPLongitude	0135835.9580E
LTP/FTPEllipsoidalHeight(metres)	102.7
FPAPLatitude	582655.9605N
DeltaFPAPLatitude(seconds)	-54.0080
FPAPLongitude	0135806.9685E
DeltaFPAPLongitude(seconds)	-28.9895
ThresholdCrossingHeight	50.0
TCHUnitsSelector	0 (feet)
GlidepathAngle(degrees)	3.00
CourseWidth(metres)	105.00
LengthOffset(metres)	0
HAL(metres)	40.0
VAL(metres)	50.0

Output data

DataBlock	10 12 07 13 05 13 00 00 01 39 31 05 A1 08 17 19 6C 85 FF 05 03 18 10 5A FE 85 1D FF F4 01 2C 01 64 00 C8 FA 9F 56 CA B0
CalculatedCRC Value	9F56CAB0

Required Additional Data

ICAOCode	ES
LTP/FTPOrthometricHeight(metres)	90.1