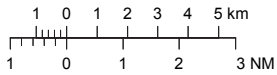


**VISUAL APPROACH CHART - ICAO**

1:250000



**AD ELEV 507 FEET**

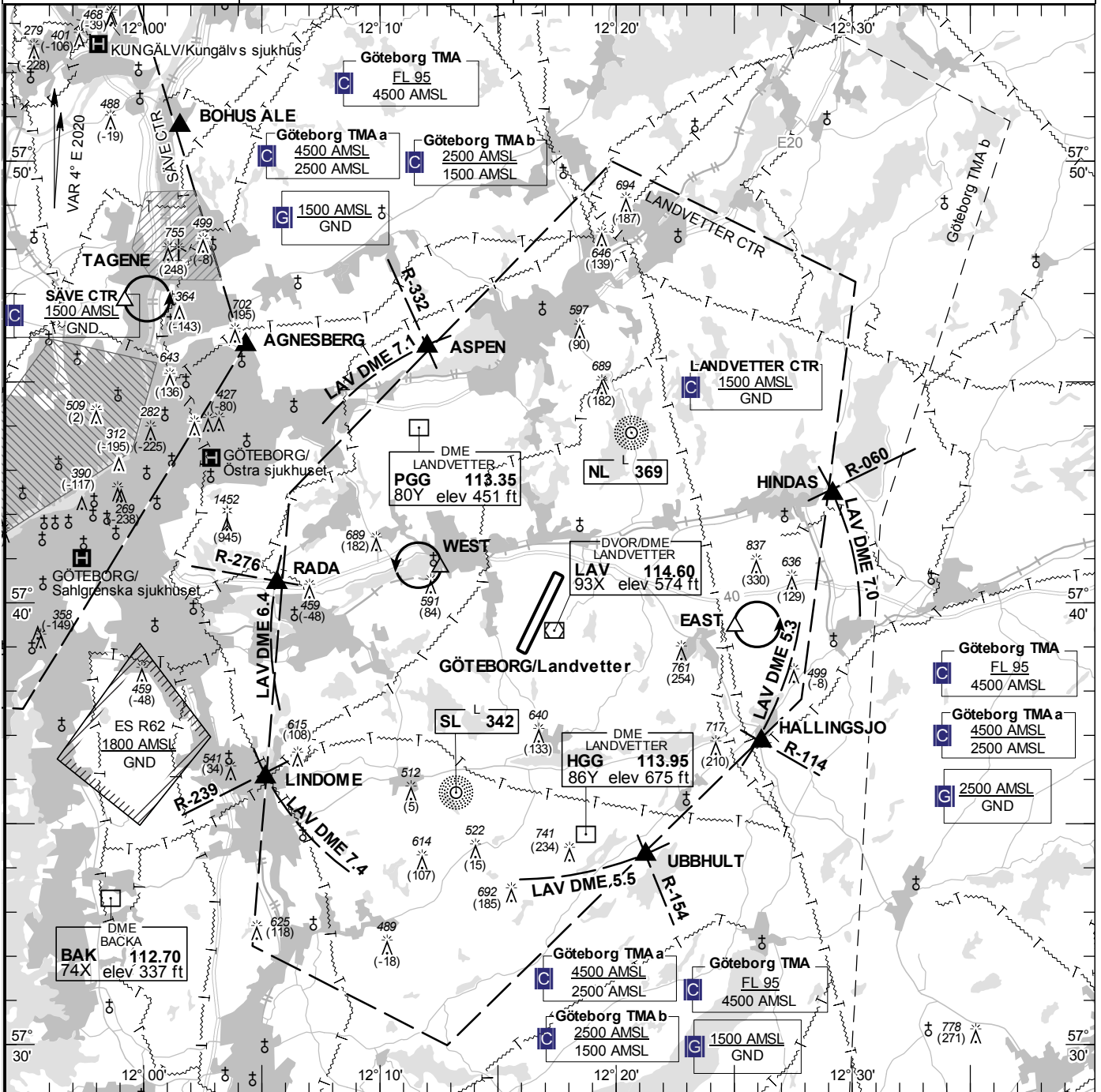
ELEV and ALT in ft  
HGT in ft above AD ELEV

**TA 5000 AMSL**

LANDVETTER TOWER	118.605
	123.100
LANDVETTER GROUND	121.905
CLR DELIVERY	121.680
LANDVETTER APRON	121.605
LANDVETTER ATIS	118.380
	114.600

**AD 2 ESGG 6-1**

**GÖTEBORG/Landvetter SWEDEN**



**Communication failure**

Aircraft outside CTR having received no clearance should land at an aerodrome outside CTR and obtain clearance by telephone for further flight to Göteborg/Landvetter. If no suitable aerodrome is within reach;

- 1 SQUAWK 7600
- 2 Enter CTR via RADA to Holding WEST at or below 1500 ft AMSL. Transmit blind your intentions.
- 3 In holding stand by for optical signals from TWR.

**Remark**

Obstacle below 197 ft AGL not shown in CTR.

RWY NR	THR ELEV	PAPI (MEHT)
03	478.3 ft	Left/3.00° (59 ft)
21	506.4 ft	Left/3.00° (56 ft)

**Legend**  
See GEN 2.3

**Entry / exit point**

ASPEN	574547N 0121200E
HINDAS	574227N 0122910E
HALLINGSJO	573651N 0122609E
UBBHULT	573417N 0122115E
LINDOME	573602N 0120509E
RADA	574026N 0120538E

**Holding**

<b>EAST:</b>	Hold south of road 40 and east of power line, east of point 573927N 0122502E
<b>WEST:</b>	Hold west of LANDVETTER church, west of point 574047N 0121232E