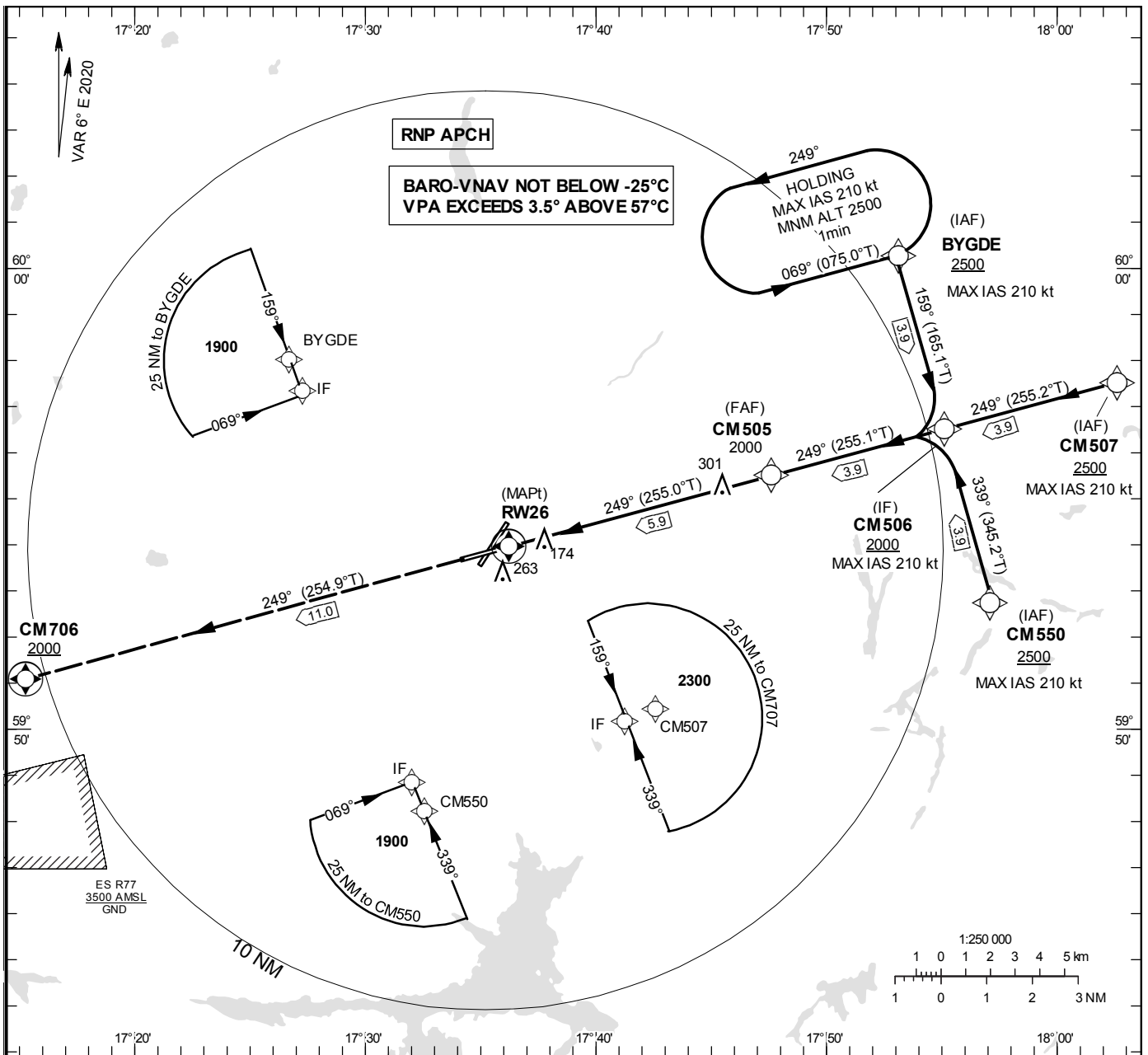


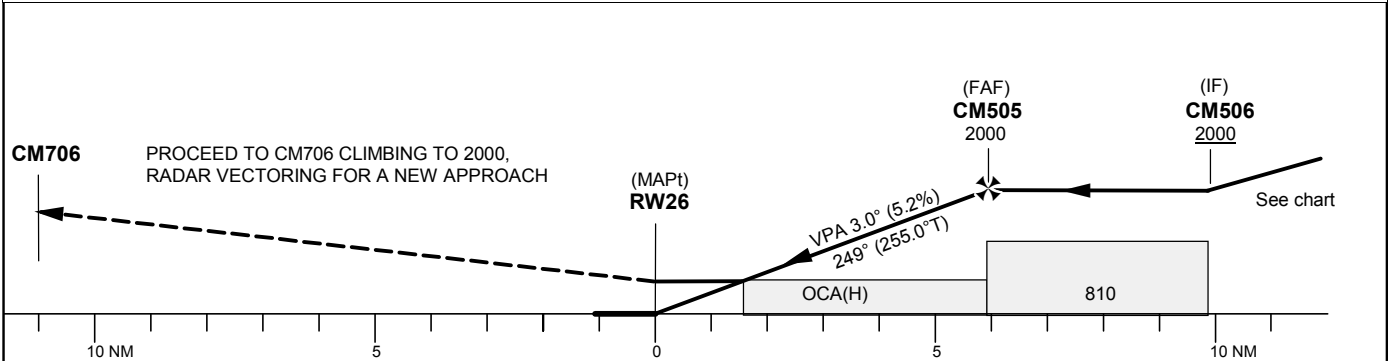
INSTRUMENT APPROACH CHART – ICAO
THR ELEV 62 ft, AD ELEV 69 ft
 OCH are related to THR.
 BRG are MAG (True).
 ALT, HGT and ELEV in ft.

UPPSALA TOWER	119.200
UPPSALA APPROACH	130.400

RNP RWY 26
EGNOS CH 72303 E 26A



TA 5000 ft AMSL RDH 50.0 ft



Cat of ACFT	OCA (H)				Final approach Dist to RW 26 (NM)	Distance FAF-MAPt 5.9 NM						
	A	B	C	D		5	4	3	2			
LPV	304 (242)	316 (254)	324 (262)	335 (273)	ALT	1700	1390	1070	750			
LNAV/VNAV	380 (320)	390 (330)	400 (340)	410 (350)	GS	kt	80	100	120	140	160	180
LNAV	550 (490)				Rate of descent	ft/min	425	530	635	745	850	955

RNP RWY 26 via BYGDE

Path Term	Waypoint Identifier	Fly-over	Course °M(°T)	Dist (NM)	Turn Dir	Rest Alts (ft AMSL)	Speed Limits (kt)	VPA/RDH(°/ft)	Rec Navaid	Navigation Specification
IF	BYGDE	-	-	-	-	+2500	-210	-	-	RNP APCH
TF	CM506	-	159°(165.1°)	3.9	-	+2000	-	-	-	RNP APCH

RNP RWY 26 via CM550

Path Term	Waypoint Identifier	Fly-over	Course °M(°T)	Dist (NM)	Turn Dir	Rest Alts (ft AMSL)	Speed Limits (kt)	VPA/RDH	Rec Navaid	Navigation Specification
IF	CM550	-	-	-	-	+2500	-210	-	-	RNP APCH
TF	CM506	-	339° (345.2°)	3.9	-	+2000	-	-	-	RNP APCH

RNP RWY 26 via CM507

Path Term	Waypoint Identifier	Fly-over	Course °M(°T)	Dist (NM)	Turn Dir	Rest Alts (ft AMSL)	Speed Limits (kt)	VPA/RDH	Rec Navaid	Navigation Specification
IF	CM507	-	-	-	-	+2500	-210	-	-	RNP APCH
TF	CM506	-	249° (255.2°)	3.9	-	+2000	-	-	-	RNP APCH

Path Term	Waypoint Identifier	Fly-over	Course °M(°T)	Dist (NM)	Turn Dir	Rest Alts (ft AMSL)	Speed Limits (kt)	VPA/RDH	Rec Navaid	Navigation Specification
IF	CM506	-	-	-	-	+2000	-210	-	-	RNP APCH
TF	CM505	-	249° (255.1°)	3.9	-	@2000	-	-	-	RNP APCH
TF	RW26	Y	249° (255.0°)	5.9	-	@112	-	-3.0/50	-	RNP APCH
TF	CM706	Y	249° (254.9°)	11.0	-	+2000	-	-	-	RNP APCH
VM	-	-	249°	-	-	-	-	-	-	RNP APCH

RNP RWY 26 – Holding at BYGDE

Path Term	Waypoint Identifier	Fly-over	Course °M(°T)	Dist (NM)	Turn Dir	Rest Alts (ft AMSL)	Speed Limits (kt)	VPA/RDH	Rec Navaid	Navigation Specification
HM	BYGDE	Y	069° (075.0°)	-	L	+2500	-210	-	-	RNAV 1

FAS Data Block

RNP RWY 26

Input data

Operation Type	0
SBAS Provider	1 (EGNOS)
Airport Identifier	ESCM
Runway	26
Runway Letter	0 (None)
Approach Performance Designator	0
Route Indicator	
Reference Path Data Selector	0
Reference Path Identifier	E26A
LTP/FTP Latitude	595357.7800N
LTP/FTP Longitude	0173613.8700E
LTP/FTP Ellipsoidal Height (metres)	42.7
FPAP Latitude	595341.2000N
Delta FPAP Latitude (seconds)	-16.5800
FPAP Longitude	0173412.0100E
Delta FPAP Longitude (seconds)	-121.8600
Threshold Crossing Height	50.0
TCH Units Selector	0 (feet)
Glidepath Angle (degrees)	3.00
Course Width (metres)	105.00
Length Offset (metres)	0
HAL (metres)	40.0
VAL (metres)	50.0

Output data

Data Block	10 0D 03 13 05 1A 00 00 01 36 32 05 28 BE B4 19 5C 04 8E 07 AB 15 78 7E FF F8 47 FC F4 01 2C 01 64 00 C8 FA CF 90 7D FA
Calculated CRC Value	CF907DFA

Required Additional Data

ICAO Code	ES
LTP/FTP Orthometric Height (metres)	18.8