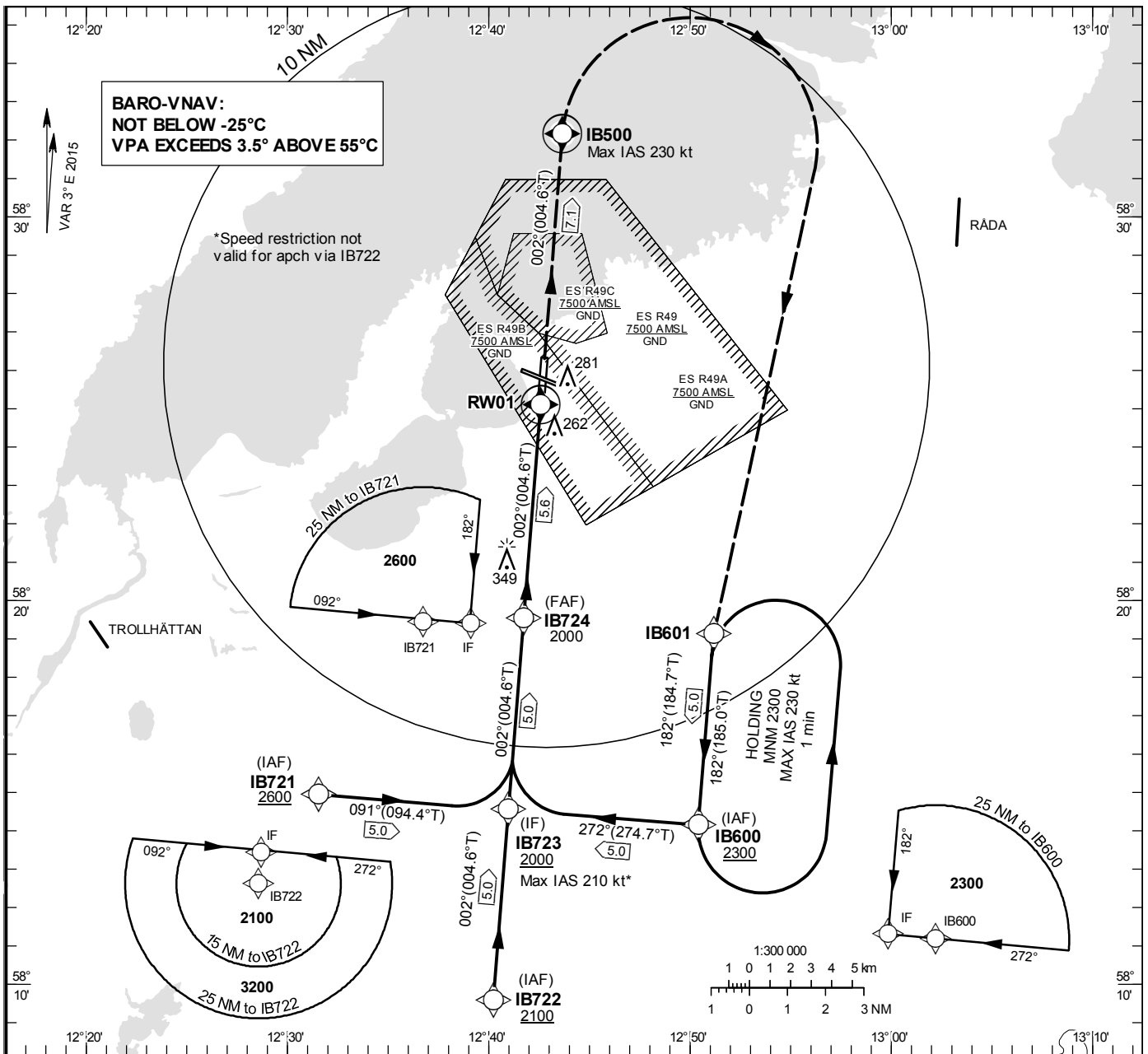


**INSTRUMENT  
APPROACH  
CHART – ICAO**

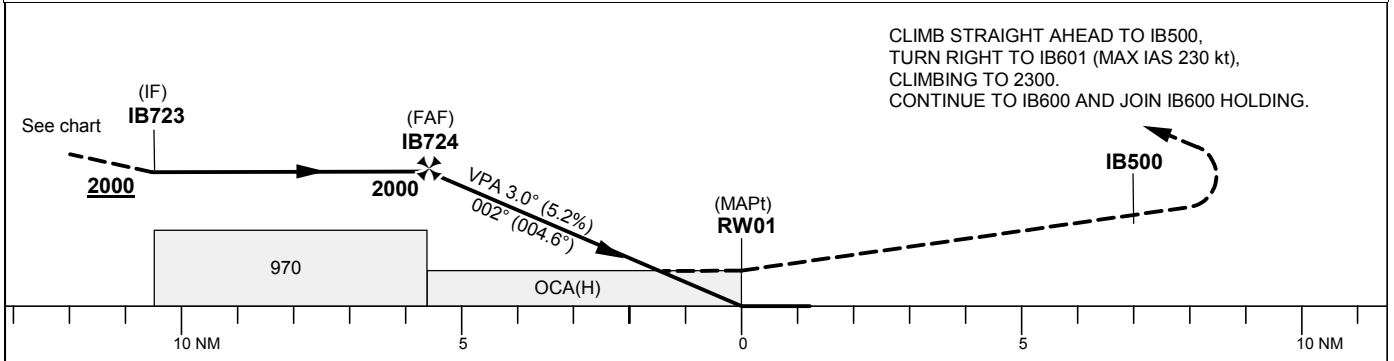
**THR ELEV 169.4 ft, AD ELEV 181 ft**  
 OCH are related to THR.  
 BRG are MAG (True).  
 ALT, HGT and ELEV in ft.

SÄTENÄS TOWER	128.200
SÄTENÄS APPROACH	134.550

**RNP RWY 01**



TA 5000 ft AMSL RDH 50.0 ft



OCA (H)					Final approach				Distance FAF-MAPt 5.6 NM								
Cat of ACFT	A	B	C	D	Dist to RWY01 (NM)	5	4	3	2	5	4	3	2				
LNAV/VNAV	400(240)	410(250)	420(260)	430(270)	ALT	1810	1490	1170	860	GS	kt	80	100	120	140	160	180
LNAV	610(450)				Rate of descent	ft/min	425	530	635	745	850	955					

## RNP RWY 01 via IB600

Path Desc	Waypoint Identifier	Fly-over	Course °M(°T)	Dist (NM)	Turn Dir	Altitude	Speed	VPA/RDH	Rec Navaid	Navigation Specification
IF	IB600	-	-	-	-	+2300	-	-	-	RNP APCH
TF	IB723	-	272°(274.7°)	5.0	-	+2000	-210	-	-	RNP APCH

## RNP RWY 01 via IB721

Path Desc	Waypoint Identifier	Fly-over	Course °M(°T)	Dist (NM)	Turn Dir	Altitude	Speed	VPA/RDH	Rec Navaid	Navigation Specification
IF	IB721	-	-	-	-	+2600	-	-	-	RNP APCH
TF	IB723	-	091°(094.4°)	5.0	-	+2000	-210	-	-	RNP APCH

## RNP RWY 01 via IB722

Path Desc	Waypoint Identifier	Fly-over	Course °M(°T)	Dist (NM)	Turn Dir	Altitude	Speed	VPA/RDH	Rec Navaid	Navigation Specification
IF	IB722	-	-	-	-	+2100	-	-	-	RNP APCH
TF	IB723	-	002°(004.6°)	5.0	-	+2000	-	-	-	RNP APCH

Path Desc	Waypoint Identifier	Fly-over	Course °M(°T)	Dist (NM)	Turn Dir	Altitude	Speed	VPA/RDH	Rec Navaid	Navigation Specification
IF	IB723	-	-	-	-	+2000	-	-	-	RNP APCH
TF	IB724	-	002°(004.6°)	5.0	-	@2000	-	-	-	RNP APCH
TF	RW01	Y	002°(004.6°)	5.6	-	@219	-	-3.0/50	-	RNP APCH
TF	IB500	Y	002°(004.6°)	7.1	-	+1500	-230	-	-	RNP APCH
DF	IB601	-	-	-	R	-	-	-	-	RNP APCH
TF	IB600	-	182°(184.7°)	5.0	-	+2300	-	-	-	RNP APCH
HM	IB600	Y	182°(185.0°)	-	L	+2300	-230	-	-	RNAV 1