

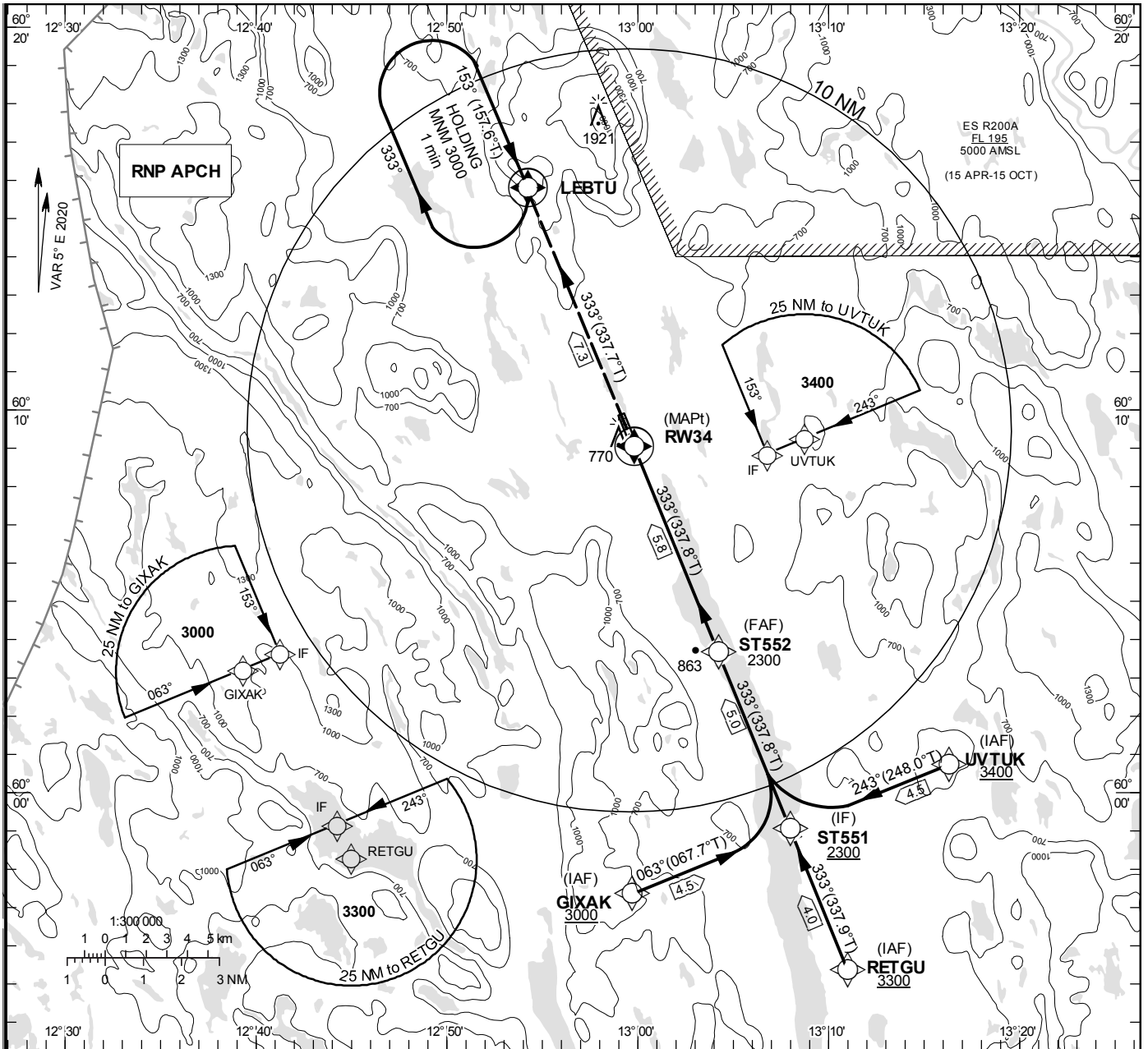
**INSTRUMENT
APPROACH
CHART – ICAO**

THR ELEV 394 ft, AD ELEV 394 ft
 OCH are related to THR.
 BRG are MAG (True).
 ALT, HGT and ELEV in ft.

TORSBY INFORMATION 122.055

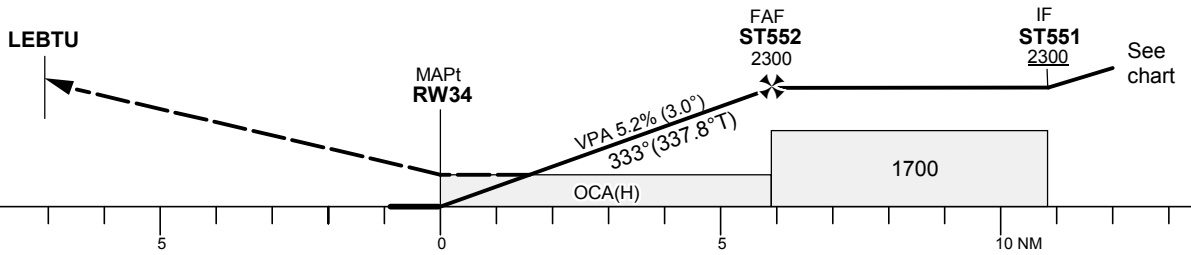
RNP RWY 34

EGNOS Ch 41224 E 34A



TA 5000 ft AMSL RDH 50 ft

CLIMB STRAIGHT AHEAD TO LEPTU CLIMBING TO 3000
 AND JOIN LEPTU HOLDING



OCA (H)		Final approach	Distance FAF-MAPt 5.8 NM					
Cat of ACFT	A	B	Dist to RW 34	5	4	3	2	
LPV	900 (506)	912 (518)	ALT	2040	1720	1400	1080	
LNAV	1030 (640)		GS	kt	80	100	120	140
			Rate of descent	ft/min	425	530	635	745

RNP RWY 34 via GIXAK

Path Desc	Waypoint Identifier	Fly-over	Course °M(°T)	Dist (NM)	Turn Dir	Altitude	Speed	VPA/RDH	Rec Navaid	Navigation Specification
IF	GIXAK	-	-	-	-	+3000	-	-	-	RNP APCH
TF	ST551	-	063°(067.7°)	4.5	-	+2300	-	-	-	RNP APCH

RNP RWY 34 via RETGU

Path Desc	Waypoint Identifier	Fly-over	Course °M(°T)	Dist (NM)	Turn Dir	Altitude	Speed	VPA/RDH	Rec Navaid	Navigation Specification
IF	RETGU	-	-	-	-	+3300	-	-	-	RNP APCH
TF	ST551	-	333°(337.9°)	4.0	-	+2300	-	-	-	RNP APCH

RNP RWY 34 via UVTUK

Path Desc	Waypoint Identifier	Fly-over	Course °M(°T)	Dist (NM)	Turn Dir	Altitude	Speed	VPA/RDH	Rec Navaid	Navigation Specification
IF	UVTUK	-	-	-	-	+3400	-	-	-	RNP APCH
TF	ST551	-	243°(248.0°)	4.5	-	+2300	-	-	-	RNP APCH

Path Desc	Waypoint Identifier	Fly-over	Course °M(°T)	Dist (NM)	Turn Dir	Altitude	Speed	VPA/RDH	Rec Navaid	Navigation Specification
IF	ST551	-	-	-	-	+2300	-	-	-	RNP APCH
TF	ST552	-	333°(337.8°)	5.0	-	@2300	-	-	-	RNP APCH
TF	RW34	Y	333°(337.8°)	5.8	-	@443	-	-3.0/50	-	RNP APCH
DF	LEBTU	Y	333°(337.7°)	7.3	-	-	-	-	-	RNP APCH

ESST Holding LEBTU

Path Desc	Waypoint Identifier	Fly-over	Course °M(°T)	Dist (NM)	Turn Dir	Altitude	Speed	VPA/RDH	Rec Navaid	Navigation Specification
HM	LEBTU	Y	153°(157.6°)	-	R	+3000	-	-	-	RNP 1

FAS Data Block

RNP RWY 34

Input data

Operation Type	0
SBAS Provider	1
Airport Identifier	ESST
Runway	34
Runway Direction	0
Approach Performance Designator	0
Route Indicator	
Reference Path Data Selector	0
Reference Path Identifier	E34A
LTP/FTP Latitude	600902.7700N
LTP/FTP Longitude	0125948.8500E
LTP/FTP Ellipsoidal Height (metres)	152.4
FPAP Latitude	600950.3100N
Delta FPAP Latitude (seconds)	47.5400
FPAP Longitude	0125909.7500E
Delta FPAP Longitude (seconds)	-39.1000
Threshold Crossing Height	50.0
TCH Units Selector	0
Glidepath Angle (degrees)	3.00
Course Width (metres)	105.00
Length Offset (metres)	0
HAL (metres)	40.0
VAL (metres)	50.0

Output data

Data Block	10 14 13 13 05 22 00 00 01 34 33 05 64 5C D0 19 E4 E1 93 05 F4 19 68 73 01 88 CE FE F4 01 2C 01 64 00 C8 FA 23 8D 7D CF
Calculated CRC Value	238D7DCF

Required Additional Data

ICAO Code	ES
LTP/FTP Orthometric Height (metres)	120.1
FPAP Orthometric Height (metres)	106.7