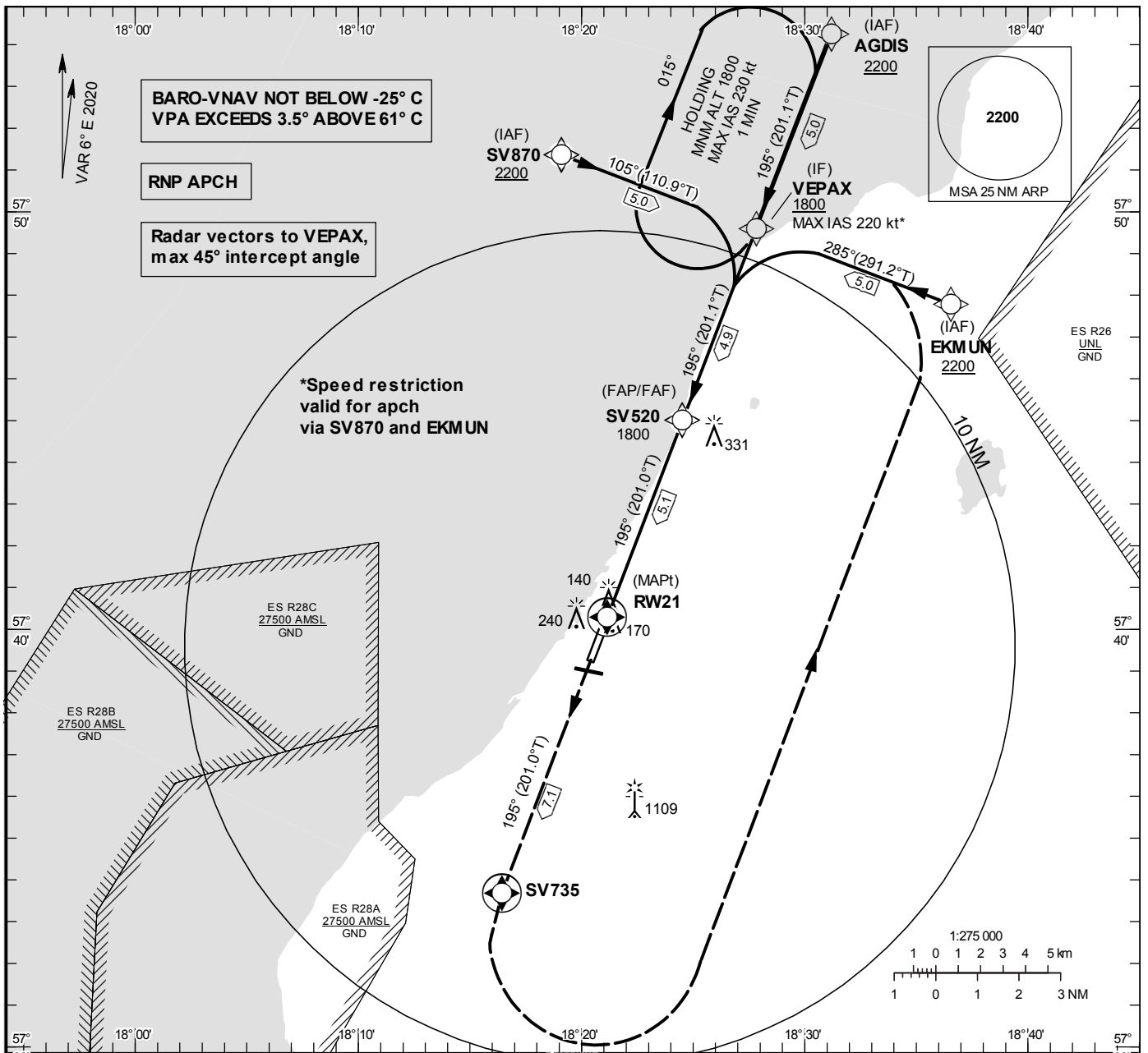


INSTRUMENT APPROACH CHART – ICAO
THR ELEV 137.0 ft, AD ELEV 164 ft
 OCH are related to THR.
 BRG are MAG (True).
 ALT, HGT and ELEV in ft.

VISBY TOWER 120.305
 VISBY APPROACH 126.155

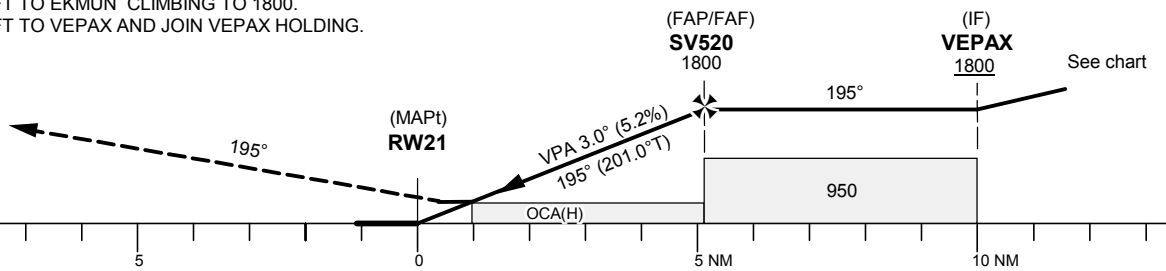
RNP RWY 21

EGNOS CH 98519 E 21A



TA 5000 ft AMSL RDH 50.0 ft

CLIMB STRAIGHT AHEAD TO SV735,
 TURN LEFT TO EKMUN CLIMBING TO 1800.
 TURN LEFT TO VEPAX AND JOIN VEPAX HOLDING.



Cat of ACFT	OCA (H)				Final approach Dist to RW 21	Distance FAF-MAPt 5.1 NM						
	A	B	C	D		NM	5	4	3	2		
LPV	286 (149)	296 (159)	304 (167)	316 (179)	ALT	ft	1779	1461	1142	824		
LNAV/VNAV	389 (252)	398 (261)	408 (271)	418 (281)	GS	kt	80	100	120	140	160	180
LNAV	570 (430)				Rate of descent	ft/min	425	530	635	745	850	955

RNP RWY 21 via AGDIS

Path Desc	Waypoint Identifier	Fly-over	Course °M(°T)	Dist (NM)	Turn Dir	Altitude	Speed	VPA/RDH	Rec Navaid	Navigation Specification
IF	AGDIS	-	-	-	-	+2200	-	-	-	RNP APCH
TF	VEPAX	-	195°(201.1°)	5.0	-	+1800	-	-	-	RNP APCH

RNP RWY 21 via EKMUN

Path Desc	Waypoint Identifier	Fly-over	Course °M(°T)	Dist (NM)	Turn Dir	Altitude	Speed	VPA/RDH	Rec Navaid	Navigation Specification
IF	EKMUN	-	-	-	-	+2200	-	-	-	RNP APCH
TF	VEPAX	-	285°(291.2°)	5.0	-	+1800	-220	-	-	RNP APCH

RNP RWY 21 via SV870

Path Desc	Waypoint Identifier	Fly-over	Course °M(°T)	Dist (NM)	Turn Dir	Altitude	Speed	VPA/RDH	Rec Navaid	Navigation Specification
IF	SV870	-	-	-	-	+2200	-	-	-	RNP APCH
TF	VEPAX	-	105°(110.9°)	5.0	-	+1800	-220	-	-	RNP APCH

Path Desc	Waypoint Identifier	Fly-over	Course °M(°T)	Dist (NM)	Turn Dir	Altitude	Speed	VPA/RDH	Rec Navaid	Navigation Specification
TF	VEPAX	-	-	-	-	+1800	-	-	-	RNP APCH
TF	SV520	-	195°(201.1°)	4.9	-	@1800	-	-	-	RNP APCH
TF	RW21	Y	195°(201.0°)	5.1	-	@187	-	-3.0/5.0	-	RNP APCH
CF	SV735	Y	195°(201.0°)	7.1	-	-	-	-	VSB	RNP APCH
DF	EKMUN	-	-	-	L	-	-	-	-	RNP APCH
TF	VEPAX	Y	285°(291.2°)	5.0	L	+1800	-	-	-	RNP APCH
HM	VEPAX	-	195°(201.1°)	-	R	+1800	-230	-	-	RNAV 1

FAS Data Block

RNP RWY 21

Input data

Operation Type	0
SBAS Provider	1 (EGNOS)
Airport Identifier	ESSV
Runway	21
Runway Letter	0 (None)
Approach Performance Designator	0
Route Indicator	
Reference Path Data Selector	0
Reference Path Identifier	E21A
LTP/FTP Latitude	574016.2500N
LTP/FTP Longitude	0182107.9600E
LTP/FTP Ellipsoidal Height (metres)	66.7
FPAP Latitude	573859.1990N
Delta FPAP Latitude (seconds)	-77.0510
FPAP Longitude	0182012.8095E
Delta FPAP Longitude (seconds)	-55.1505
Threshold Crossing Height	50.0
TCH Units Selector	0 (feet)
Glidepath Angle (degrees)	3.00
Course Width (metres)	105.00
Length Offset (metres)	552
HAL (metres)	40.0
VAL (metres)	35.0

Output data

Data Block	10 16 13 13 05 15 00 00 01 31 32 05 F4 F1 BF 18 F0 3B E0 07 9B 16 0A A6 FD 23 51 FE F4 01 2C 01 64 45 C8 AF 0E F6 60 27
Calculated CRC Value	0EF66027
Supplied CRC Value	0EF66027
Comparison Result	OK