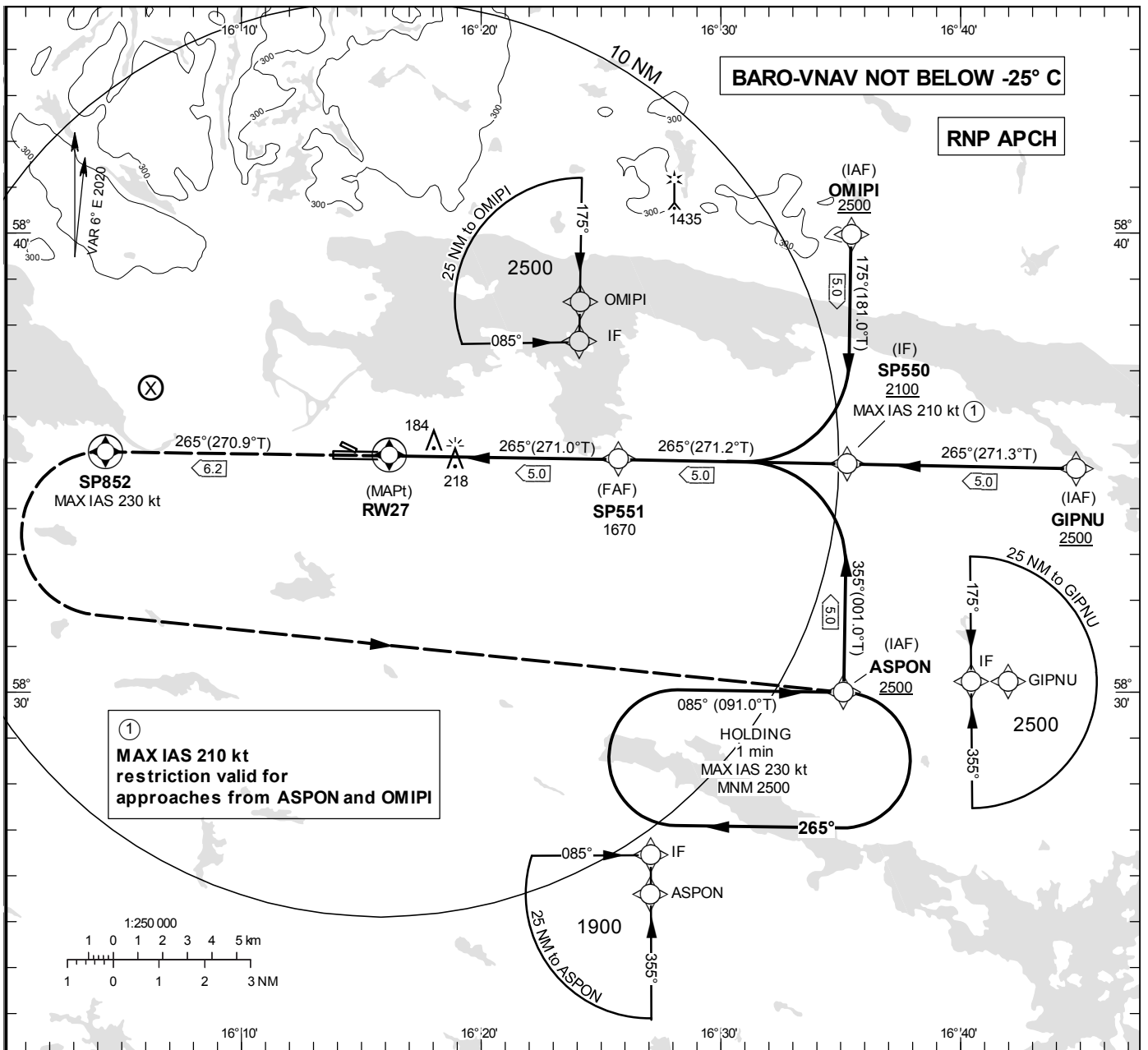


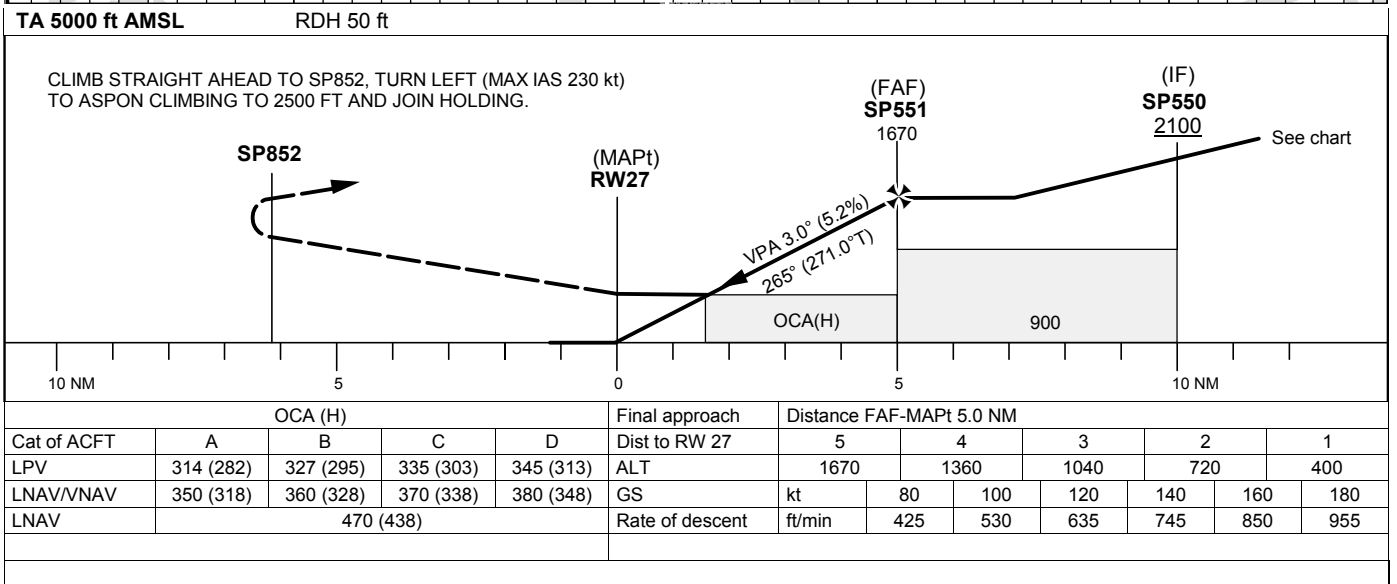
**INSTRUMENT APPROACH CHART – ICAO**  
**THR ELEV 32.3 ft, AD ELEV 32 ft**  
 OCH are related to THR.  
 BRG are MAG (True).  
 ALT, HGT and ELEV in ft.

KUNGSÄNGEN TOWER 120.355  
 ÖSTGÖTA APPROACH 132.955

**RNP RWY 27**  
 EGNOS Ch 68827 E 27A



① **MAX IAS 210 kt restriction valid for approaches from ASPON and OMIPI**



## RNP RWY 27 via GIPNU

Path Desc	Waypoint Identifier	Fly-over	Course °M(°T)	Dist (NM)	Turn Dir	Altitude	Speed	VPA/RDH	Rec Navaid	Navigation Specification
IF	GIPNU	-	-	-	-	+2500	-	-	-	RNP APCH
TF	SP550	-	265°(271.3°)	5.0	-	+2100	-	-	-	RNP APCH
TF	SP551	-	265°(271.2°)	5.0	-	@1670	-	-	-	RNP APCH
TF	RW27	Y	265°(271.0°)	5.0	-	@82	-	-3.0/50	-	RNP APCH
CF	SP852	Y	265°(270.9°)	6.2	-	-	-230	-	VSN	RNP APCH
DF	ASPON	Y	-	-	L	+2500	-	-	-	RNP APCH
HM	ASPON	Y	085°(091.0°)	-	R	+2500	-230	-	-	RNAV 1

## RNP RWY 27 via OMIPI

Path Desc	Waypoint Identifier	Fly-over	Course °M(°T)	Dist (NM)	Turn Dir	Altitude	Speed	VPA/RDH	Rec Navaid	Navigation Specification
IF	OMIPI	-	-	-	-	+2500	-	-	-	RNP APCH
TF	SP550	-	175°(181.0°)	5.0	-	+2100	-210	-	-	RNP APCH
TF	SP551	-	265°(271.2°)	5.0	R	@1670	-	-	-	RNP APCH
TF	RW27	Y	265°(271.0°)	5.0	-	@82	-	-3.0/50	-	RNP APCH
CF	SP852	Y	265°(270.9°)	6.2	-	-	-230	-	VSN	RNP APCH
DF	ASPON	Y	-	-	L	+2500	-	-	-	RNP APCH
HM	ASPON	Y	085°(091.0°)	-	R	+2500	-230	-	-	RNAV 1

## RNP RWY 27 via ASPON

Path Desc	Waypoint Identifier	Fly-over	Course °M(°T)	Dist (NM)	Turn Dir	Altitude	Speed	VPA/RDH	Rec Navaid	Navigation Specification
IF	ASPON	-	-	-	-	+2500	-	-	-	RNP APCH
TF	SP550	-	355°(000.1°)	5.0	-	+2100	-210	-	-	RNP APCH
TF	SP551	-	265°(271.2°)	5.0	L	@1670	-	-	-	RNP APCH
TF	RW27	Y	265°(271.0°)	5.0	-	@82	-	-3.0/50	-	RNP APCH
CF	SP852	Y	265°(270.9°)	6.2	-	-	-230	-	VSN	RNP APCH
DF	ASPON	Y	-	-	L	+2500	-	-	-	RNP APCH
HM	ASPON	Y	085°(091.0°)	-	R	+2500	-230	-	-	RNAV 1

## FAS Data Block

## RNP RWY 27

## Input data

Operation Type	0
SBAS Provider	1
Airport Identifier	ESSP
Runway	27
Runway Direction	0
Approach Performance Designator	0
Route Indicator	
Reference Path Data Selector	0
Reference Path Identifier	E27A
LTP/FTP Latitude	583508.9200N
LTP/FTP Longitude	0161610.5300E
LTP/FTP Ellipsoidal Height (metres)	37.8
FPAP Latitude	583510.0100N
Delta FPAP Latitude (seconds)	1.0900
FPAP Longitude	0161354.0800E
Delta FPAP Longitude (seconds)	-136.4500
Threshold Crossing Height	50.0
TCH Units Selector	0
Glidepath Angle (degrees)	3.00
Course Width (metres)	105.00
Length Offset (metres)	0
HAL (metres)	40.0
VAL (metres)	50.0

## Output data

Data Block	10 10 13 13 05 1B 00 00 01 37 32 05 F0 6D 24 19 44 6E FB 06 7A 15 84 08 00 FC D5 FB F4 01 2C 01 64 00 C8 FA 36 D7 FC 0F
Calculated CRC Value	36D7FC0F

## Required Additional Data

ICAO Code	ES
LTP/FTP Orthometric Height (metres)	9.8
FPAP Orthometric Height (metres)	4.1