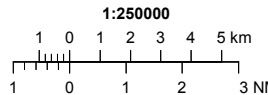


VISUAL APPROACH CHART – ICAO



AD ELEV 173 FEET

ELEV and ALT in ft
 HGT in ft above AD ELEV

TA 5000 AMSL

SAAB TOWER

118.805

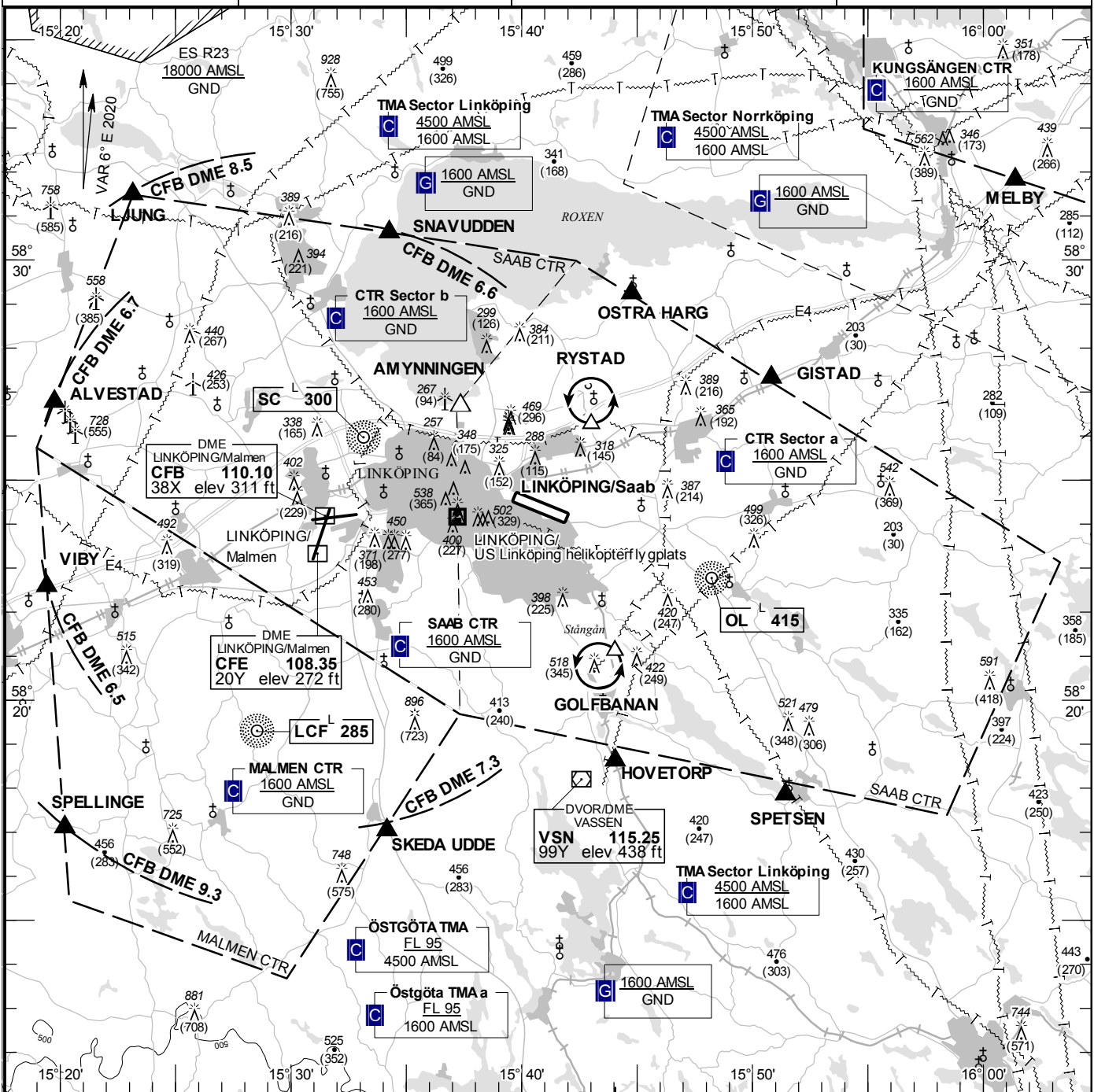
133.105

ÖSTGÖTA APPROACH

132.955

AD 2 ESSL 6-1

LINKÖPING/Saab SWEDEN



Communication failure

- 1 SQUAWK 7600
- 2 Enter CTR via OSTRÄ HARG – Holding RYSTAD at or below 1500 ft AMSL to traffic circuit. Transmit blind your intentions.
- 3 Flash LDG-lights and watch for optical signals from signalling lamp from the camera installation placed on top of remote tower (position marked R-TWR on AD Chart).

Remark

During the operational hours of MALMEN TWR; SAAB CTR sector B delegated to MALMEN TWR. Right hand traffic circuit when RWY 29 is in use.

RWY NR	THR ELEV	PAPI (MEHT)
11	142.8 ft	Left/3.25° (56 ft)
29	172.9 ft	Left/2.86° (54 ft)

Legend

See GEN 2.3

Entry / exit point

LJUNG	583129N 0152309E
SNAVUDDEN	583037N 0153416E
OSTRÄ HARG	582914N 0154446E
GISTAD	582719N 0155049E
SPETSEN	581751N 0155126E
HOVETORP	581837N 0154403E
ALVESTAD	582646N 0151945E

Reporting point

AMYNNINGEN	582640N 0153721E
------------	------------------

Holding

- RYSTAD: Hold over Rystad church, north of point 582620N 0154300E
- GOLFBANAN: Hold west of Stångån over the golf course, south west of point 582111N 0154402E

LFV

CHANGE: Call sign.

AIRAC AMDT 3/2021 **17 JUN 2021**