

**VISUAL APPROACH CHART - ICAO**

1:250000



**AD ELEV 504 FEET**

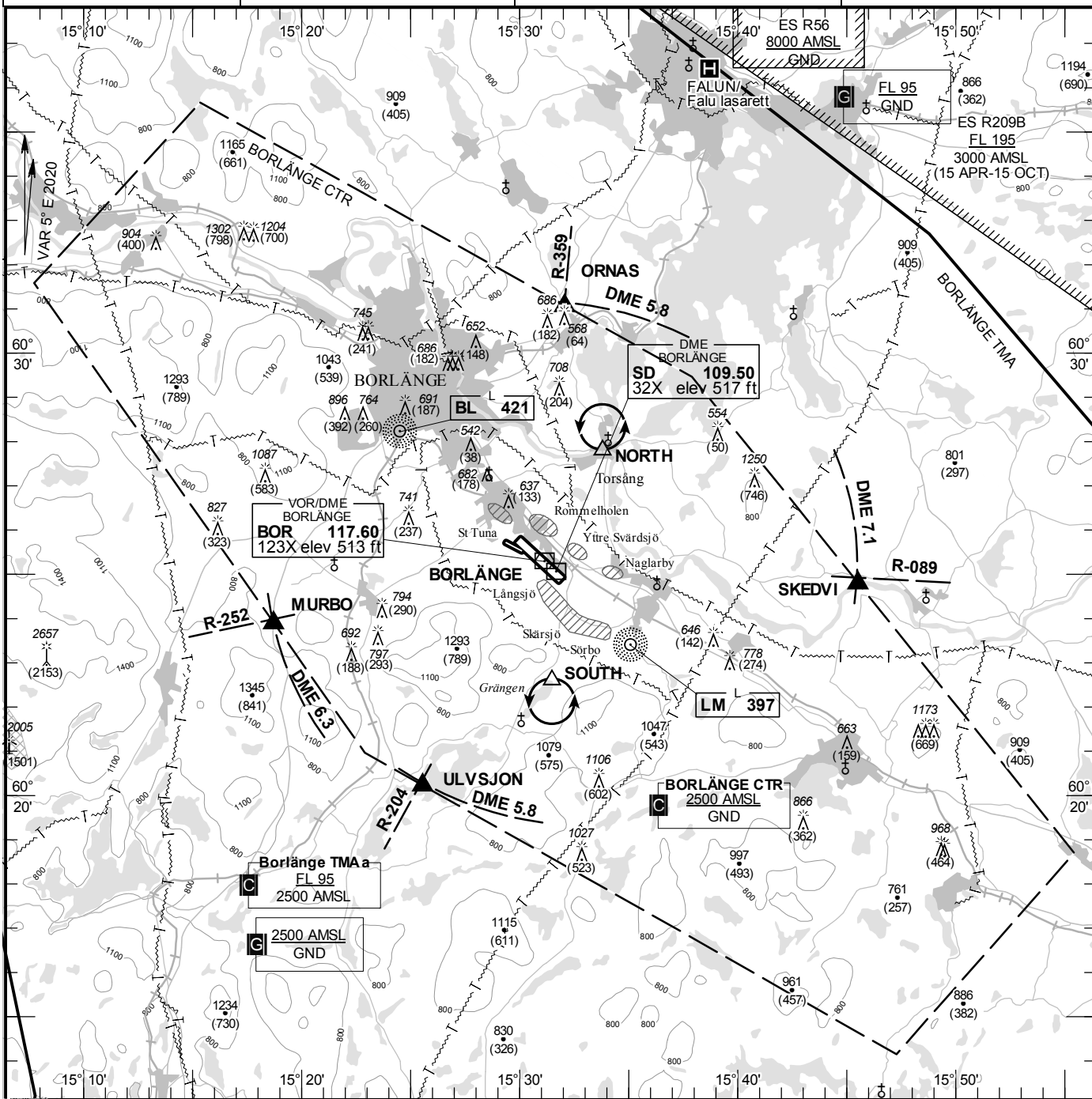
ELEV and ALT in ft  
HGT in ft above AD ELEV

**TA 5000 AMSL**

**BORLÄNGE TOWER 127.305**

**AD 2 ESSD 6-1**

**BORLÄNGE SWEDEN**



**Communication failure**

- 1 SQUAWK 7600
- 2 Enter CTR via ULVSJON – Holding SOUTH at or below 2500 ft AMSL to traffic circuit. Transmit blind your intentions.
- 3 Flash LDG-lights and watch TWR for optical signals.

**Remark**

Note: Noise sensitive area should be avoided below 2000 ft AMSL.

**MISCELLANEOUS**

During APCH 32 risk for mix-up and LDG on other RWY short of THR 32.

RWY NR	THR ELEV	PAPI (MEHT)
14	504 ft	Left/3.25° (65 ft)
32	493.0 ft	Left/3.00° (61 ft)

**Entry / exit point**

ORNAS	603103N 0153204E
SKEDVI	602447N 0154531E
ULVSJON	602013N 0152533E
MURBO	602353N 0151843E

**Holding**

**NORTH:** Hold north of bridge at Torsång, north of point 602747N 0153348E

**SOUTH:** Hold south of northern part of lake Grängen, south of point 602235N 0153128E

**Legend**

See GEN 2.3