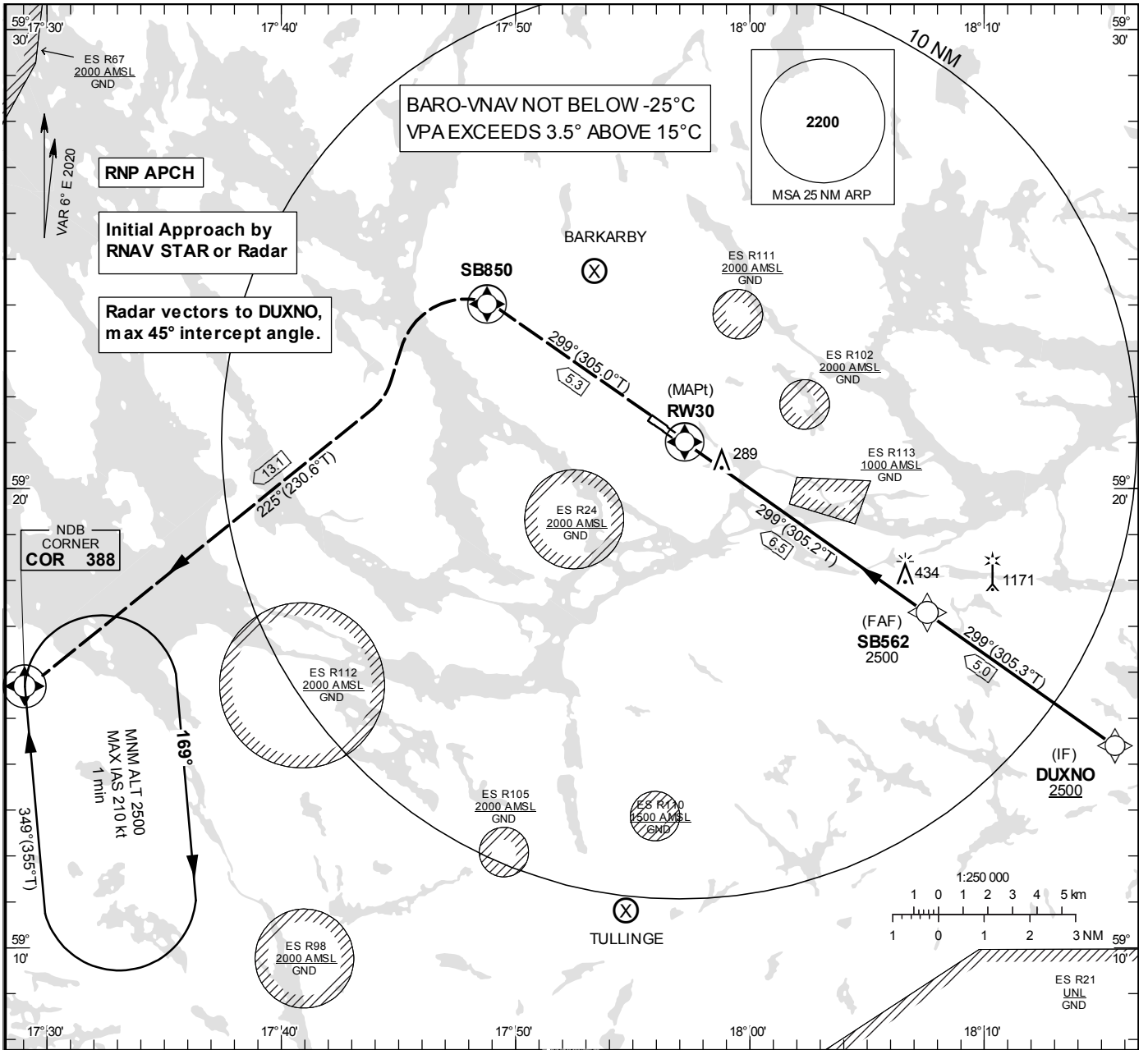


**INSTRUMENT  
APPROACH  
CHART – ICAO**

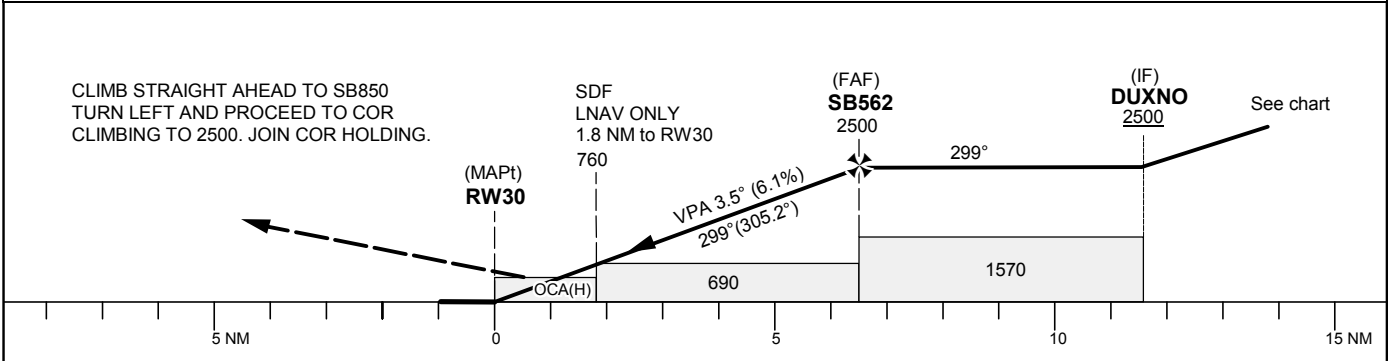
**THR ELEV 42.8 ft, AD ELEV 47 ft**  
OCH are related to THR.  
BRG are MAG (True).  
ALT, HGT and ELEV in ft.

BROMMA TOWER	118.105
STOCKHOLM APPROACH	120.155
BROMMA ATIS	122.455

**RNP RWY 30**



TA 5000 ft AMSL RDH 50.0 ft



OCA (H)			Final Approach	Distance FAF-MAPt 6.5 NM						
Cat of ACFT	A	B	C	Dist to RW30	NM	6	5	4	3	2
LNAV/VNAV	460(417)	473(430)	486(443)	ALT	ft	2323	1951	1579	1208	836
LNAV	580(530)			GS	kt	80	100	120	140	160
				Rate of descent	ft/min	495	620	745	865	990

**RNP RWY 30**

Path Desc	Waypoint Identifier	Fly-over	Course °M(°T)	Dist (NM)	Turn Dir	Altitude	Speed	VPA/RDH	Rec Navaid	Navigation Specification
IF	DUXNO	-	-	-	-	+2500	-	-	-	RNP APCH
TF	SB562	-	299°(305.3°)	5.0	-	2500	-	-	-	RNP APCH
TF	RW30	Y	299°(305.2°)	6.5	-	93	-	3.5/50	-	RNP APCH
TF	SB850	Y	299°(305.0°)	5.3	-	-	-	-	-	RNP APCH
TF	COR	Y	225°(230.6°)	13.1	L	-	-	-	-	RNP APCH
HM	COR	Y	349°(355.0°)	-	R	+2500	-210	-	-	RNAV 1