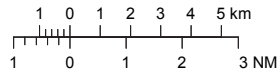


VISUAL APPROACH CHART – ICAO

1:250000



AD ELEV 138 FEET

ELEV and ALT in ft
HGT in ft above AD ELEV

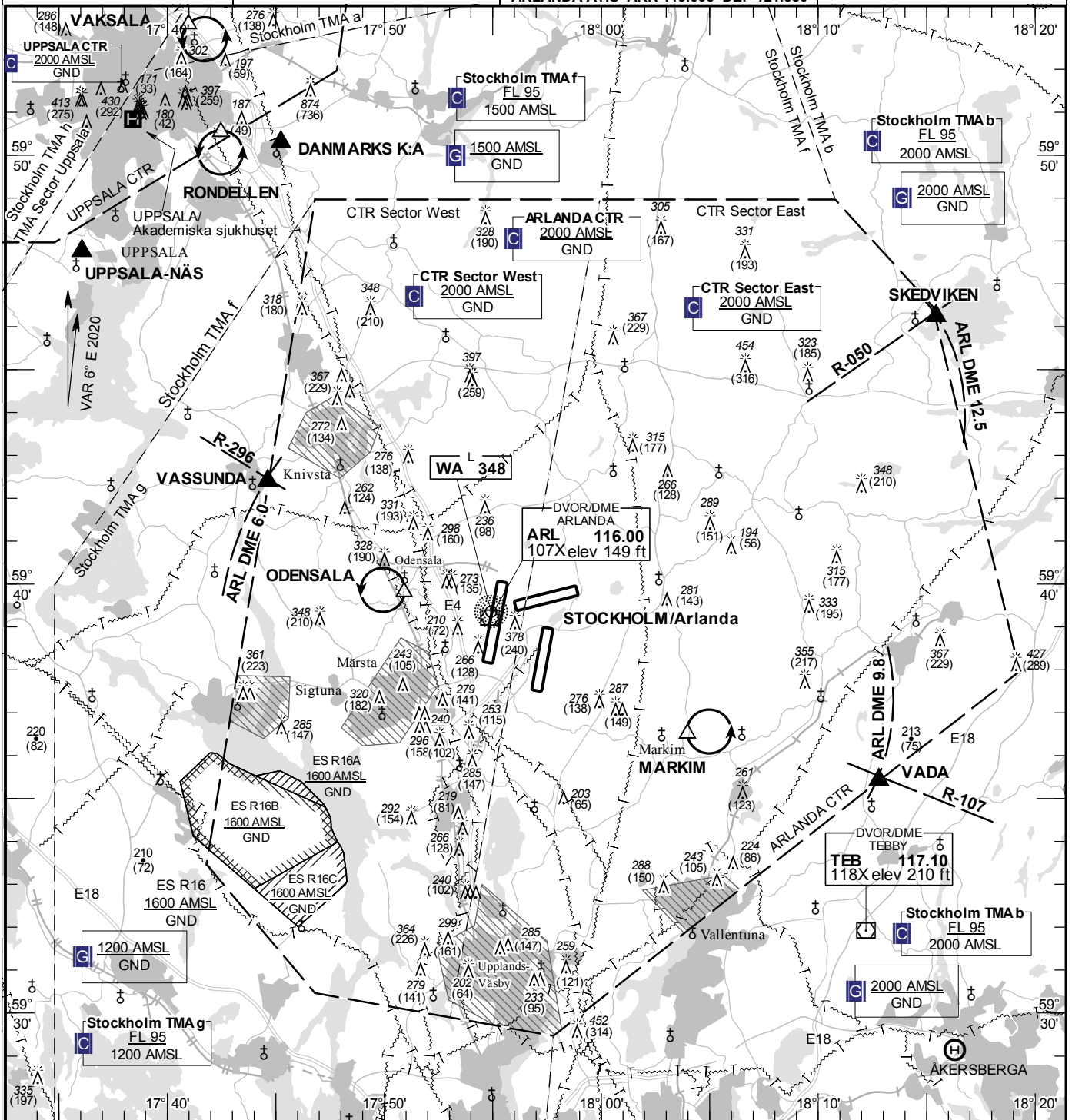
TA 5000 AMSL

ARLANDA TOWER

118.505 125.130 128.730 123.100
ARLANDA GROUND
121.705 121.980 121.930
ARLANDA CLR DELIVERY 121.830
STOCKHOLM APPROACH 123.755
ARLANDA ATIS ARR 119.005 DEP 121.630

AD 2 ESSA 6-1

**STOCKHOLM/Arlanda
SWEDEN**



Communication failure

Aircraft with Communication failure is not allowed to enter Arlanda CTR.
In case of Communication failure proceed to aerodrome outside Arlanda CTR.

Remark

Note: Noise sensitive area should be avoided below 2000 ft AMSL

Legend

See GEN 2.3

RWY NR	THR ELEV	PAPI (MEHT)
01L	98.6 ft	Left/3.00° (61 ft)
19R	118.2 ft	Left/3.00° (56 ft)
01R	138.0 ft	Right/3.00° (57 ft)
19L	98.9 ft	Left/3.00° (57 ft)
08	108 ft	Left/3.00° (56 ft)
26	124.8 ft	Left/3.00° (60 ft)

Entry / exit point

SKEDVIKEN 594614N 0181526E
VADA 593525N 0181248E
VASSUNDA 594223N 0174438E

Holding

ODENSALA: Hold at Odensala Church, west of point 593948N 0175054E
MARKIM: Hold at Markim Church, east of point 593630N 0180359E

LFV

CHANGE: Call sign, OBST, editorial.

AIRAC AMDT 3/2021 **17 JUN 2021**

Reverse side intentionally blank