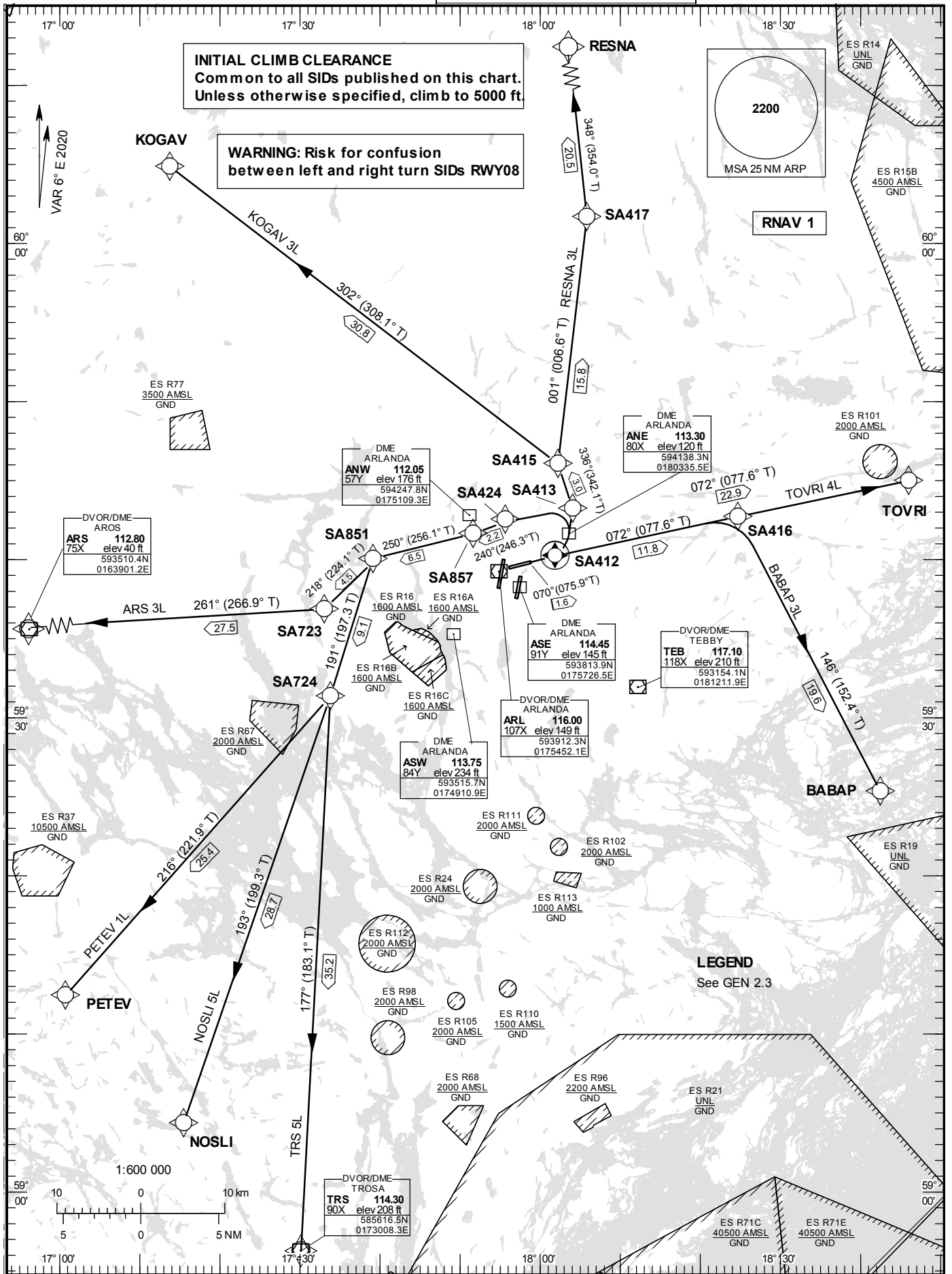


STANDARD INSTRUMENT
DEPARTURE CHART (SID) -
ICAO

HGT and ALT in ft
BRG are MAG (True)
TA 5000 ft AMSL

ARLANDA TOWER	128.730
ARLANDA ATIS DEP	121.630
STOCKHOLM APPROACH	123.755

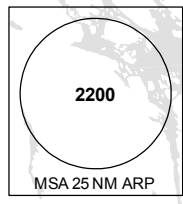
RNAV (DME/DME or GNSS)
SID RWY 08 Left turn



INITIAL CLIMB CLEARANCE
Common to all SIDs published on this chart.
Unless otherwise specified, climb to 5000 ft.

WARNING: Risk for confusion
between left and right turn SIDs RWY08

VAR 6° E 2020



DVOR/DME
AROS
ARS 112.80
75X elev 40 ft
593510.4N
0163901.2E

DME
ARLANDA
ANW 112.05
57Y elev 176 ft
594247.8N
0175109.3E

DME
ARLANDA
ANE 113.30
80X elev 120 ft
594138.3N
0180335.5E

DME
ARLANDA
ASE 114.45
91Y elev 145 ft
593813.9N
0175726.5E

DVOR/DME
TEBBY
TEB 117.10
118X elev 210 ft
593154.1N
0181211.9E

DME
ARLANDA
ASW 113.75
84Y elev 234 ft
593515.7N
0174910.9E

DVOR/DME
ARLANDA
ARL 116.00
107X elev 149 ft
593912.3N
0175452.1E

DVOR/DME
TROSA
TRS 114.30
90X elev 208 ft
585616.5N
0173008.3E

LEGEND
See GEN 2.3

Prescribed Coding of RNAV SID for RWY 08 Left turn**Notes:**

INITIAL CLIMB CLEARANCE: Climb to 5000 ft unless otherwise specified. Common to all SIDs published on charts.

Aircraft proceeding on RNAV SID shall use 400 ft/NM (6.6%) as a minimum gradient of climb up to 5000 ft AMSL.
Aircraft unable to conform with this procedure shall inform ATC accordingly.

Aircraft from STOCKHOLM/Arlanda shall not be operated at an airspeed of more than 250 kt IAS below FL 100 unless otherwise instructed.

Contact Frequency: Contact STOCKHOLM DEPARTURE, when so instructed by TWR, on channel indicated below.

ARS 3L

Path Term	Waypoint Identifier	Fly-over	Course °M(°T)	Dist (NM)	Turn Dir	Rest Alts (ft AMSL)	Speed Limits (kt)	VPA/RDH (°/ft)	Rec Navaid	Navigation Specification
CF	SA412	Y	070°(075.9°)	1.6	-	+600	-	-	ARL	RNAV 1
DF	SA424	-	-	-	L	+2500	-205	-	-	RNAV 1
TF	SA857	-	240°(246.3°)	2.2	-	-	-	-	-	RNAV 1
TF	SA851	-	250°(256.1°)	6.5	-	-	-	-	-	RNAV 1
TF	SA723	-	218°(224.1°)	4.5	-	-	-	-	-	RNAV 1
TF	ARS	-	261°(266.9°)	27.5	-	-	-	-	-	RNAV 1

SID instruction: Climb on track 070° to SA412 (MIN 600 ft before turn) – SA424 (MIN 2500 ft and MAX 205 kt IAS until SA424) – SA857 – SA851 – SA723 – ARS **124.105 MHz**

ACFT unable to follow RNAV SID: Report "unable RNAV SID due to RNAV type" to Clearance Delivery and "unable RNAV SID" to Stockholm Departure at first contact.
Climb on track 070° to ARL DME 3.7 (MIN 600 ft before turn). Turn Left to track 360° (MAX 205 kt IAS until established on track 360°). Expect radar vectors to ARS.

BABAP 3L

Path Term	Waypoint Identifier	Fly-over	Course °M(°T)	Dist (NM)	Turn Dir	Rest Alts (ft AMSL)	Speed Limits (kt)	VPA/RDH (°/ft)	Rec Navaid	Navigation Specification
CF	SA412	Y	070°(075.9°)	1.6	-	+600	-	-	ARL	RNAV 1
TF	SA416	-	072°(077.6°)	11.8	-	-	-	-	-	RNAV 1
TF	BABAP	-	146°(152.4°)	19.6	R	-	-	-	-	RNAV 1

SID instruction: Climb on track 070° to SA412 – SA416 – BABAP **130.330 MHz**

ACFT unable to follow RNAV SID: Report "unable RNAV SID due to RNAV type" to Clearance Delivery and "unable RNAV SID" to Stockholm Departure at first contact.
Climb on track 070° to ARL DME 3.7. Expect radar vectors to BABAP.

KOGAV 3L

Path Term	Waypoint Identifier	Fly-over	Course °M(°T)	Dist (NM)	Turn Dir	Rest Alts (ft AMSL)	Speed Limits (kt)	VPA/ RDH (°/ft)	Rec Navaid	Navigation Specification
CF	SA412	Y	070°(075.9°)	1.6	-	+600	-	-	ARL	RNAV 1
DF	SA413	-			L	+1500	-210	-	-	RNAV 1
TF	SA415	-	336°(342.1°)	3.0	-	-	-	-	-	RNAV 1
TF	KOGAV	-	302°(308.1°)	30.8	L	-	-	-	-	RNAV 1

SID instruction: Climb on track 070° to SA412 (MIN 600 ft before turn) – SA413 (MAX 210 kt IAS until SA413) – SA415 – KOGAV

124.105 MHz

ACFT unable to follow RNAV SID: Report "unable RNAV SID due to RNAV type" to Clearance Delivery and "unable RNAV SID" to Stockholm Departure at first contact.
Climb on track 070° to ARL DME 3.7 (MIN 600 ft before turn). Turn Left to track 360° (MAX 210 kt IAS until established on track 360°). Expect radar vectors to KOGAV.

NOSLI 5L

Path Term	Waypoint Identifier	Fly-over	Course °M(°T)	Dist (NM)	Turn Dir	Rest Alts (ft AMSL)	Speed Limits (kt)	VPA/ RDH (°/ft)	Rec Navaid	Navigation Specification
CF	SA412	Y	070°(075.9°)	1.6	-	+600	-	-	ARL	RNAV 1
DF	SA424	-	-	-	L	+2500	-205	-	-	RNAV 1
TF	SA857	-	240°(246.3°)	2.2	-	-	-	-	-	RNAV 1
TF	SA851	-	250°(256.1°)	6.5	-	-	-	-	-	RNAV 1
TF	SA724	-	191°(197.3°)	9.1	L	-	-	-	-	RNAV 1
TF	NOSLI	-	193°(199.3°)	28.7	-	-	-	-	-	RNAV 1

SID instruction: Climb on track 070° to SA412 (MIN 600 ft before turn) – SA424 (MIN 2500 ft and MAX 205 kt IAS until SA424) – SA857 – SA851 – SA724 – NOSLI

124.105 MHz

ACFT unable to follow RNAV SID: Report "unable RNAV SID due to RNAV type" to Clearance Delivery and "unable RNAV SID" to Stockholm Departure at first contact.
Climb on track 070° to ARL DME 3.7 (MIN 600 ft before turn). Turn Left to track 360° (MAX 205 kt IAS until established on track 360°). Expect radar vectors to NOSLI.

PETEV 1L

Path Term	Waypoint Identifier	Fly-over	Course °M(°T)	Dist (NM)	Turn Dir	Rest Alts (ft AMSL)	Speed Limits (kt)	VPA/ RDH (°/ft)	Rec Navaid	Navigation Specification
CF	SA412	Y	070°(075.9°)	1.6	-	+600	-	-	ARL	RNAV 1
DF	SA424	-	-	-	L	+2500	-205	-	-	RNAV 1
TF	SA857	-	240°(246.3°)	2.2	-	-	-	-	-	RNAV 1
TF	SA851	-	250°(256.1°)	6.5	-	-	-	-	-	RNAV 1
TF	SA724	-	191°(197.3°)	9.1	L	-	-	-	-	RNAV 1
TF	PETEV	-	216°(221.9°)	25.4	-	-	-	-	-	RNAV 1

SID instruction: Climb on track 070° to SA412 (MIN 600 ft before turn) – SA424 (MIN 2500 ft and MAX 205 kt IAS until SA424) – SA857 – SA851 – SA724 – PETEV

124.105 MHz

ACFT unable to follow RNAV SID: Report "unable RNAV SID due to RNAV type" to Clearance Delivery and "unable RNAV SID" to Stockholm Departure at first contact.
Climb on track 070° to ARL DME 3.7 (MIN 600 ft before turn). Turn Left to track 360° (MAX 205 kt IAS until established on track 360°). Expect radar vectors to PETEV.

RESNA 3L

Path Term	Waypoint Identifier	Fly-over	Course °M(°T)	Dist (NM)	Turn Dir	Rest Alts (ft AMSL)	Speed Limits (kt)	VPA/RDH (°/ft)	Rec Navaid	Navigation Specification
CF	SA412	Y	070°(075.9°)	1.6	-	+600	-	-	ARL	RNAV 1
DF	SA413	-			L	+1500	-210	-	-	RNAV 1
TF	SA415	-	336°(342.1°)	3.0	-	-	-	-	-	RNAV 1
TF	SA417	-	001°(006.6°)	15.8	-	-	-	-	-	RNAV 1
TF	RESNA	-	348°(354.0°)	20.5	-	-	-	-	-	RNAV 1

SID instruction: Climb on track 070° to SA412 (MIN 600 ft before turn) – SA413 (MAX 210 kt IAS until SA413) – SA415 – SA417 – RESNA **124.105 MHz**

ACFT unable to follow RNAV SID: Report "unable RNAV SID due to RNAV type" to Clearance Delivery and "unable RNAV SID" to Stockholm Departure at first contact.
Climb on track 070° to ARL DME 3.7 (MIN 600 ft before turn). Turn Left to track 360° (MAX 210 kt IAS until established on track 360°). Expect radar vectors to RESNA.

TOVRI 4L

Path Term	Waypoint Identifier	Fly-over	Course °M(°T)	Dist (NM)	Turn Dir	Rest Alts (ft AMSL)	Speed Limits (kt)	VPA/RDH (°/ft)	Rec Navaid	Navigation Specification
CF	SA412	Y	070°(075.9°)	1.6	-	+600	-	-	ARL	RNAV 1
TF	TOVRI	-	072°(077.6°)	22.9	-	-	-	-	-	RNAV 1

SID instruction: Climb on track 070° to SA412 – TOVRI **130.330 MHz**

ACFT unable to follow RNAV SID: Report "unable RNAV SID due to RNAV type" to Clearance Delivery and "unable RNAV SID" to Stockholm Departure at first contact.
Climb on track 070° to ARL DME 3.7. Expect radar vectors to TOVRI.

TRS 5L

Path Term	Waypoint Identifier	Fly-over	Course °M(°T)	Dist (NM)	Turn Dir	Rest Alts (ft AMSL)	Speed Limits (kt)	VPA/RDH (°/ft)	Rec Navaid	Navigation Specification
CF	SA412	Y	070°(075.9°)	1.6	-	+600	-	-	ARL	RNAV 1
DF	SA424	-	-	-	L	+2500	-205	-	-	RNAV 1
TF	SA857	-	240°(246.3°)	2.2	-	-	-	-	-	RNAV 1
TF	SA851	-	250°(256.1°)	6.5	-	-	-	-	-	RNAV 1
TF	SA724	-	191°(197.3°)	9.1	L	-	-	-	-	RNAV 1
TF	TRS	-	177°(183.1°)	35.2	-	-	-	-	-	RNAV 1

SID instruction: Climb on track 070° to SA412 (MIN 600 ft before turn) – SA424 (MIN 2500 ft and MAX 205 kt IAS until SA424) – SA857 – SA851 – SA724 – TRS **124.105 MHz**

ACFT unable to follow RNAV SID: Report "unable RNAV SID due to RNAV type" to Clearance Delivery and "unable RNAV SID" to Stockholm Departure at first contact.
Climb on track 070° to ARL DME 3.7 (MIN 600 ft before turn). Turn Left to track 360° (MAX 205 kt IAS until established on track 360°). Expect radar vectors to TRS.