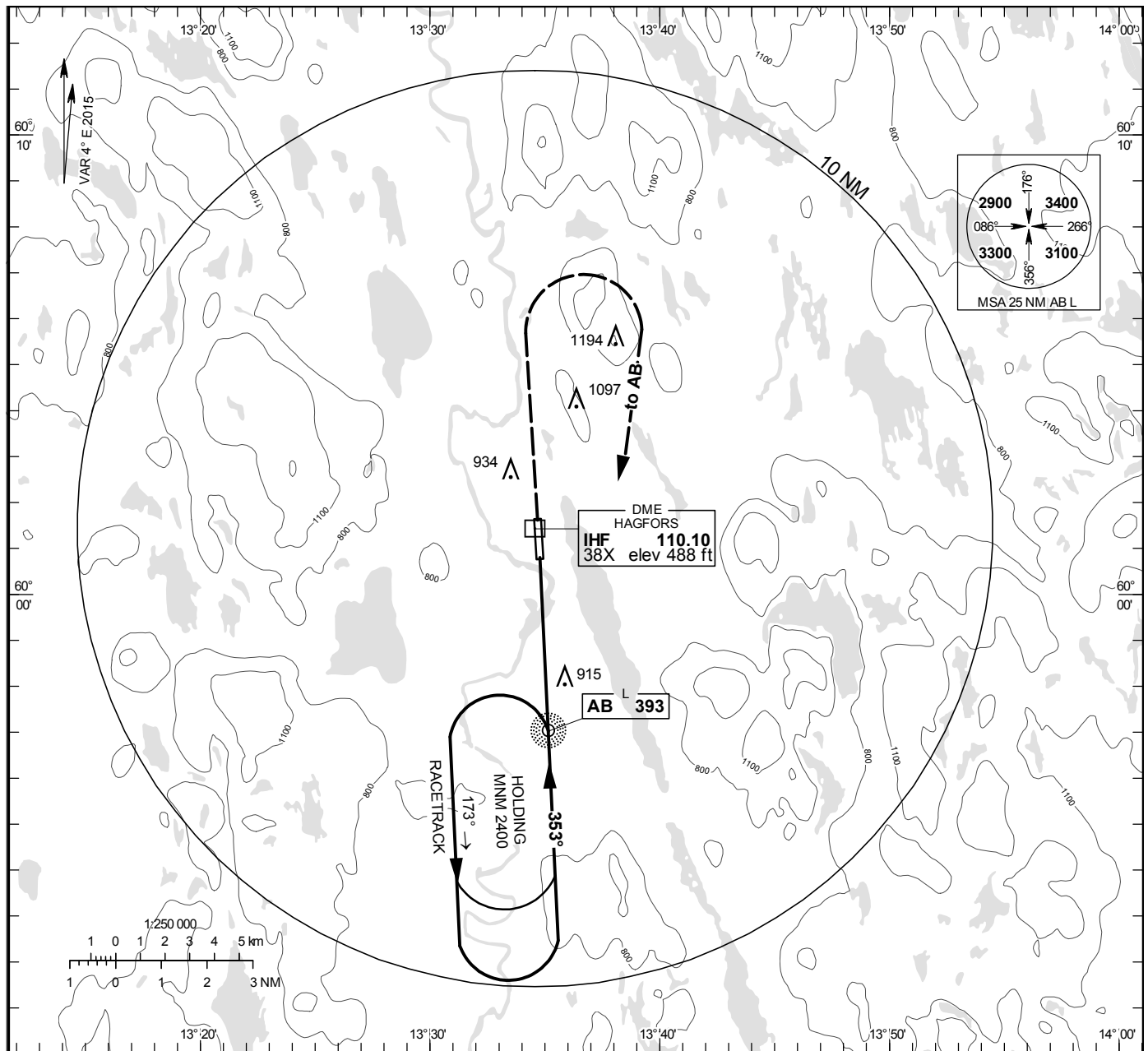


NDB y RWY 36

HAGFORS
INFORMATION 122.230

THR ELEV 469 ft, AD ELEV 474 ft
OCH are related to THR.
Circling OCH are related to AD ELEV.
BRG are MAG
ALT. HGT and ELEV in ft.

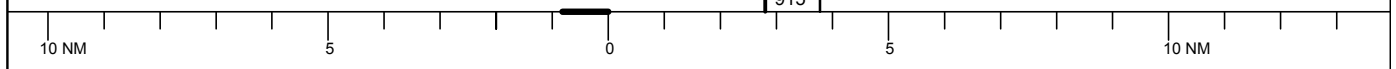
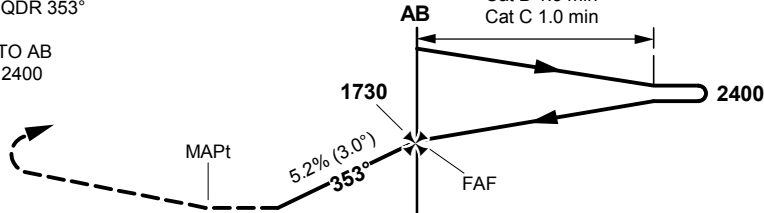
INSTRUMENT
APPROACH
CHART – ICAO



TA 5000 ft AMSL

CLIMB ON AB QDR 353°
TO 1900,
TURN RIGHT TO AB
CLIMBING TO 2400

Cat A 2.0 min
Cat B 1.5 min
Cat C 1.0 min



Cat of ACFT	OCA (H)			Final approach		Distance FAF-MAPt 3.8 NM				
	A	B	C	DME IHF NM	ALT					
Straight-in Approach	1140 (680)			4	1600					
Circling	1230 (760)	1400 (930)	1590 (1120)	GS	kt	80	100	120	140	160
				Time	min:s	2:50	2:16	1:54	1:37	1:25
				Rate of descent	ft/min	425	535	640	745	850