

**VISUAL APPROACH CHART - ICAO**

1:250000



**AD ELEV 705 FEET**

ELEV and ALT in ft  
HGT in ft above AD ELEV

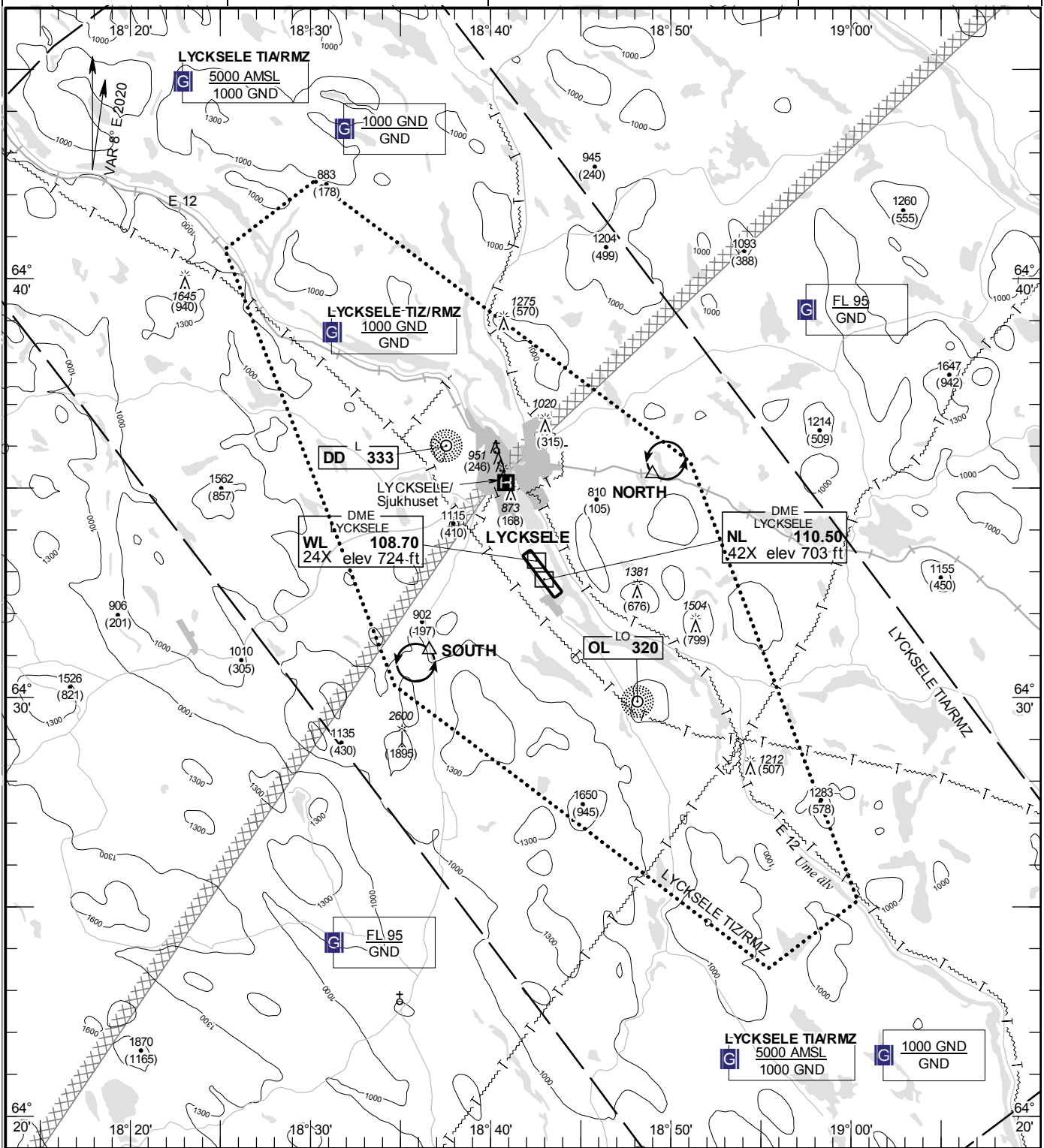
**TA 5000 AMSL**

**LYCKSELE INFORMATION**

**122.230**

**AD 2 ESNL 6-1**

**LYCKSELE SWEDEN**



**Communication failure**  
NIL

**Remark**  
NIL

RWY	THR	PAPI
NR	ELEV	(MEHT)
14	704.5 ft	Left/3.50° (50 ft)
32	689 ft	Left/3.00° (50 ft)

**Legend**  
See GEN 2.3

**Entry / exit point**  
NIL

**Holding**  
NORTH: Hold over railway crossing, north east of point 643519N 0184859E  
SOUTH: Hold over crossroad, south west of point 643107N 0183636E