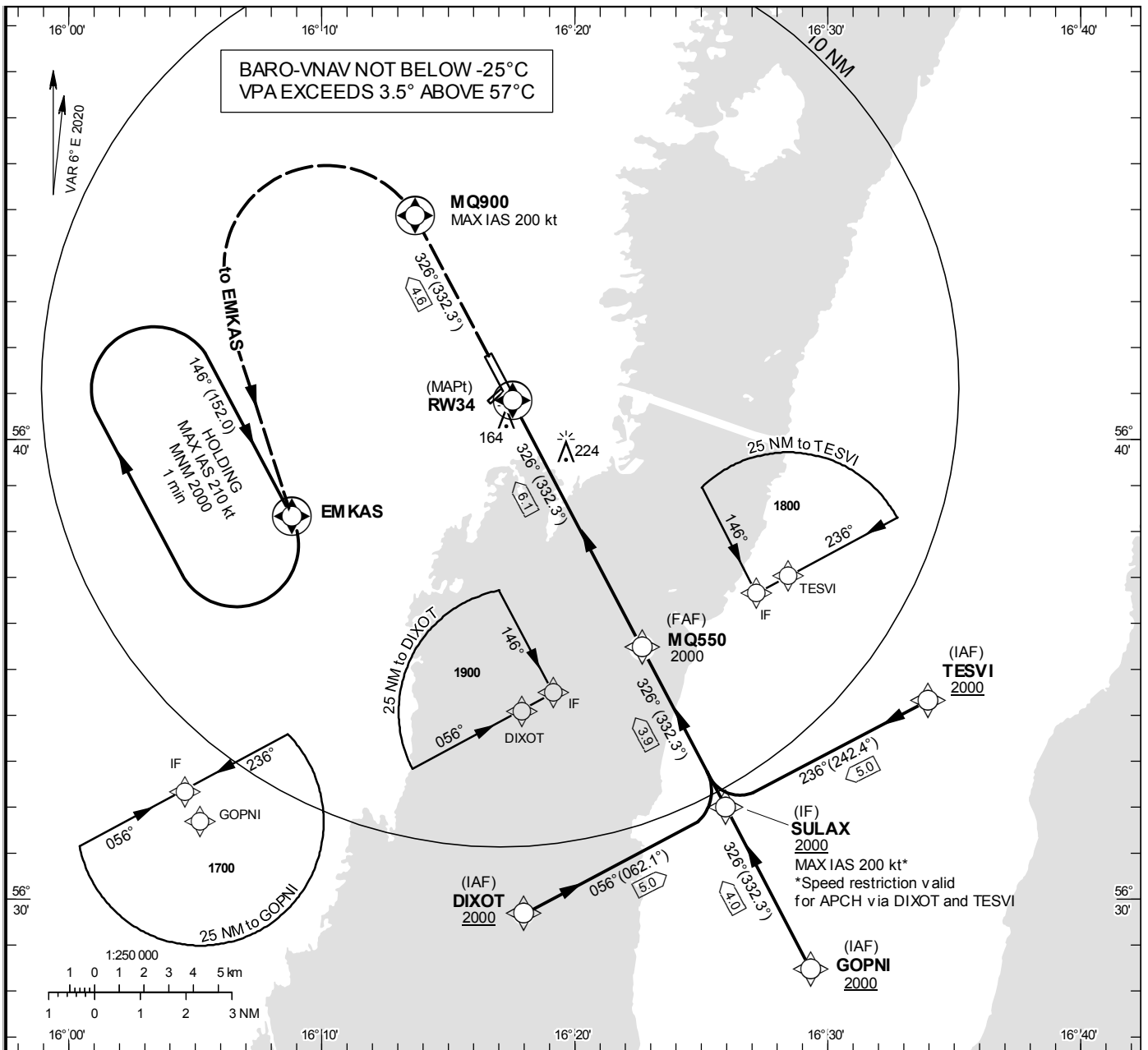


**INSTRUMENT
APPROACH
CHART – ICAO**

THR ELEV 16 ft, AD ELEV 18 ft
 OCH are related to THR.
 BRG are MAG (True).
 ALT, HGT and ELEV in ft.

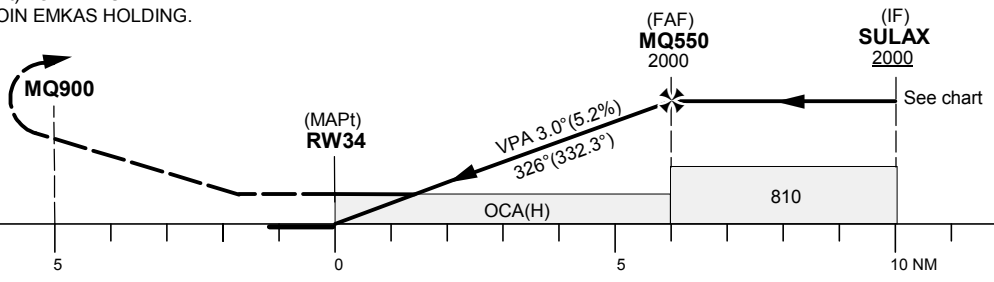
KALMAR TOWER 130.805

RNP RWY 34



TA 5000 ft AMSL RDH 50 ft

CLIMB STRAIGHT AHEAD TO MQ900,
 TURN LEFT (MAX IAS 200 kt) TO EMKAS
 CLIMBING TO 2000 AND JOIN EMKAS HOLDING.



Cat of ACFT	OCA (H)				Final approach Dist to RWY34 (NM)	Distance FAF-MAPt 6.1 NM						
	A	B	C	D		6	5	4	3	2		
LNAV/VNAV	300(290)	310(300)	320(310)	330(320)	ALT	1980	1660	1340	1030	710		
LNAV	480 (470)				GS	kt	80	100	120	140	160	180
					Time	min:s	4:33	3:39	3:02	2:36	2:17	2:02
					Rate of descent	ft/min	425	530	635	745	850	955

RNP RWY 34 via TESVI

Path Desc	Waypoint Identifier	Fly-over	Course °M(°T)	Dist (NM)	Turn Dir	Altitude	Speed	VPA/RDH	Rec Navaid	Navigation Specification
IF	TESVI	-	-	-	-	+2000	-	-	-	RNP APCH
TF	SULAX	-	236°(242.4°)	5.0	-	+2000	-200	-	-	RNP APCH

RNP RWY 34 via GOPNI

Path Desc	Waypoint Identifier	Fly-over	Course °M(°T)	Dist (NM)	Turn Dir	Altitude	Speed	VPA/RDH	Rec Navaid	Navigation Specification
IF	GOPNI	-	-	-	-	+2000	-	-	-	RNP APCH
TF	SULAX	-	326°(332.3°)	4.0	-	+2000	-	-	-	RNP APCH

RNP RWY 34 via DIXOT

Path Desc	Waypoint Identifier	Fly-over	Course °M(°T)	Dist (NM)	Turn Dir	Altitude	Speed	VPA/RDH	Rec Navaid	Navigation Specification
IF	DIXOT	-	-	-	-	+2000	-	-	-	RNP APCH
TF	SULAX	-	056°(062.1°)	5.0	-	+2000	-200	-	-	RNP APCH

Path Desc	Waypoint Identifier	Fly-over	Course °M(°T)	Dist (NM)	Turn Dir	Altitude	Speed	VPA/RDH	Rec Navaid	Navigation Specification
IF	SULAX	-	-	-	-	+2000	-	-	-	RNP APCH
TF	MQ550	-	326°(332.3°)	3.9	-	@2000	-	-	-	RNP APCH
TF	RW34	Y	326°(332.3°)	6.1	-	@65	-	-3.0/50	-	RNP APCH
DF	MQ900	Y	-	4.6	-	-	-200	-	-	RNP APCH
DF	EMKAS	Y	-	-	L	+2000	-	-	-	RNP APCH
HM	EMKAS	Y	146°(152.0°)	-	R	+2000	-210	-	-	RNAV 1