

**INSTRUMENT
APPROACH
CHART – ICAO**

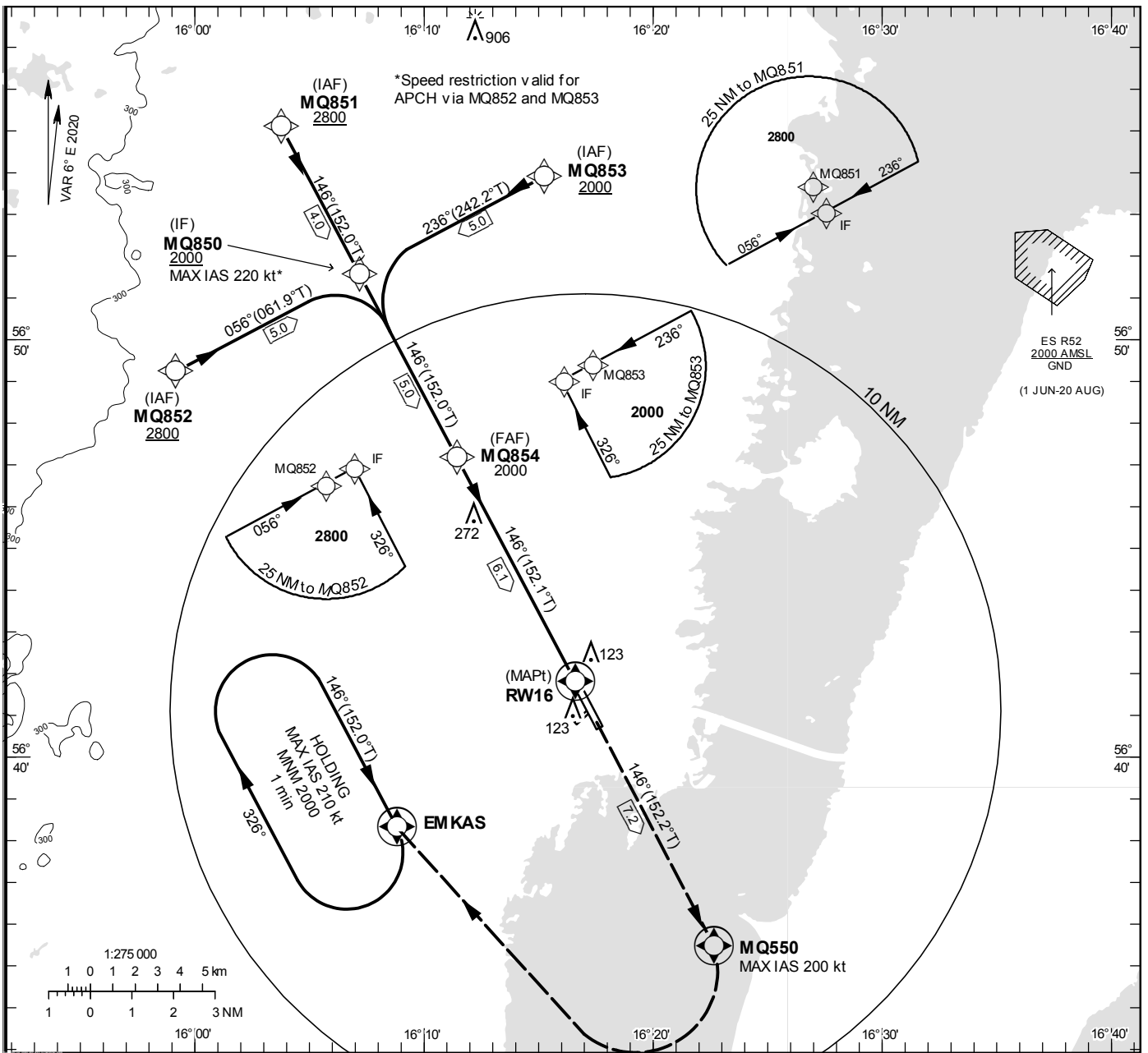
THR ELEV 18.0 ft, AD ELEV 18 ft

OCH are related to THR.
BRG are MAG (True).
ALT, HGT and ELEV in ft.

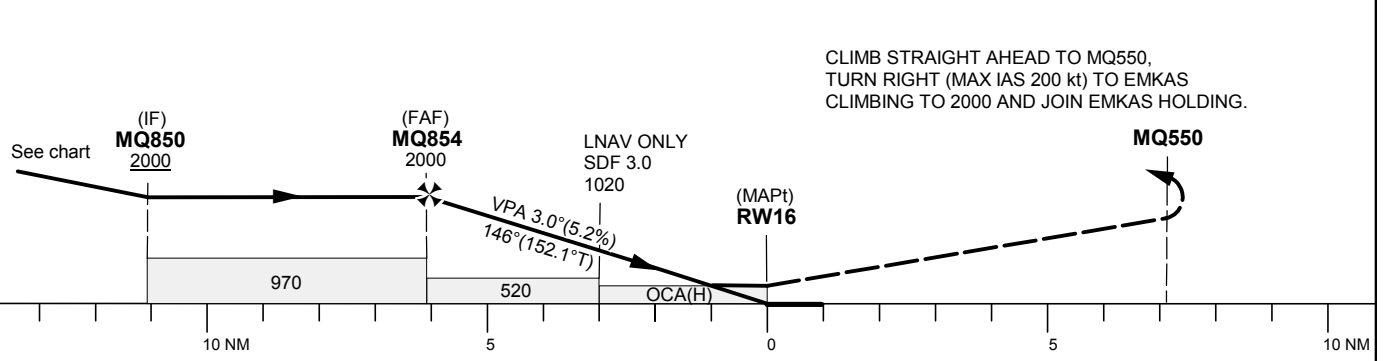
KALMAR TOWER 130.805

RNP RWY 16

EGNOS Ch 94400 E 16A



TA 5000 ft AMSL RDH 50 ft



OCA (H)				Final approach Distance FAF-MAPt 6.1 NM								
Cat of ACFT	A	B	C	D	Dist to RW16	6	5	4	3	2	1	
LPV	254(236)	266(248)	274(256)	284(266)	ALT	1980	1660	1340	1020	700	390	
LNAV	370(360)				GS	kt	80	100	120	140	160	180
					Rate of descent	ft/min	425	530	635	745	850	955

RNP RWY 16 via MQ851

Path Desc	Waypoint Identifier	Fly-over	Course °M(°T)	Dist (NM)	Turn Dir	Altitude	Speed	VPA/RDH	Rec Navaid	Navigation Specification
IF	MQ851	-	-	-	-	+2800	-	-	-	RNP APCH
TF	MQ850	-	146°(152.0°)	4.0	-	+2000	-	-	-	RNP APCH

RNP RWY 16 via MQ852

Path Desc	Waypoint Identifier	Fly-over	Course °M(°T)	Dist (NM)	Turn Dir	Altitude	Speed	VPA/RDH	Rec Navaid	Navigation Specification
IF	MQ852	-	-	-	-	+2800	-	-	-	RNP APCH
TF	MQ850	-	056°(061.9°)	5.0	-	+2000	-220	-	-	RNP APCH

RNP RWY 16 via MQ853

Path Desc	Waypoint Identifier	Fly-over	Course °M(°T)	Dist (NM)	Turn Dir	Altitude	Speed	VPA/RDH	Rec Navaid	Navigation Specification
IF	MQ853	-	-	-	-	+2000	-	-	-	RNP APCH
TF	MQ850	-	236°(242.2°)	5.0	-	+2000	-220	-	-	RNP APCH

Path Desc	Waypoint Identifier	Fly-over	Course °M(°T)	Dist (NM)	Turn Dir	Altitude	Speed	VPA/RDH	Rec Navaid	Navigation Specification
IF	MQ850	-	-	-	-	+2000	-	-	-	RNP APCH
TF	MQ854	-	146°(152.0°)	5.0	-	@2000	-	-	-	RNP APCH
TF	RW16	Y	146°(152.1°)	6.1	-	@68	-	-3.0/50	-	RNP APCH
CF	MQ550	Y	146°(152.2°)	7.2	-	-	-200	-	KAL	RNP APCH
DF	EMKAS	Y	-	-	R	+2000	-	-	-	RNP APCH
HM	EMKAS	Y	146°(152.0°)	-	R	+2000	-210	-	-	RNAV 1

FAS Data Block

RNP RWY 16

Input data

Operation Type	0
SBAS Provider	1
Airport Identifier	ESMQ
Runway	16
Runway Direction	0
Approach Performance Designator	0
Route Indicator	
Reference Path Data Selector	0
Reference Path Identifier	E16A
LTP/FTP Latitude	564148.5500N
LTP/FTP Longitude	0161635.9800E
LTP/FTP Ellipsoidal Height (metres)	35.8
FPAP Latitude	564042.7340N
Delta FPAP Latitude (seconds)	-65.8160
FPAP Longitude	0161739.0860E
Delta FPAP Longitude (seconds)	63.1060
Threshold Crossing Height	50.0
TCH Units Selector	0
Glidepath Angle (degrees)	3.00
Course Width (metres)	105.00
Length Offset (metres)	256
HAL (metres)	40.0
VAL (metres)	50.0

Output data

Data Block	10 11 0D 13 05 10 00 00 01 36 31 05 0C E6 54 18 18 35 FC 06 66 15 D0 FD FD 04 ED 01 F4 01 2C 01 64 20 C8 FA 23 BD B8 12
Calculated CRC Value	23BDB812

Required Additional Data

ICAO Code	ES
LTP/FTP Orthometric Height (metres)	5.3
FPAP Orthometric Height (metres)	4.6