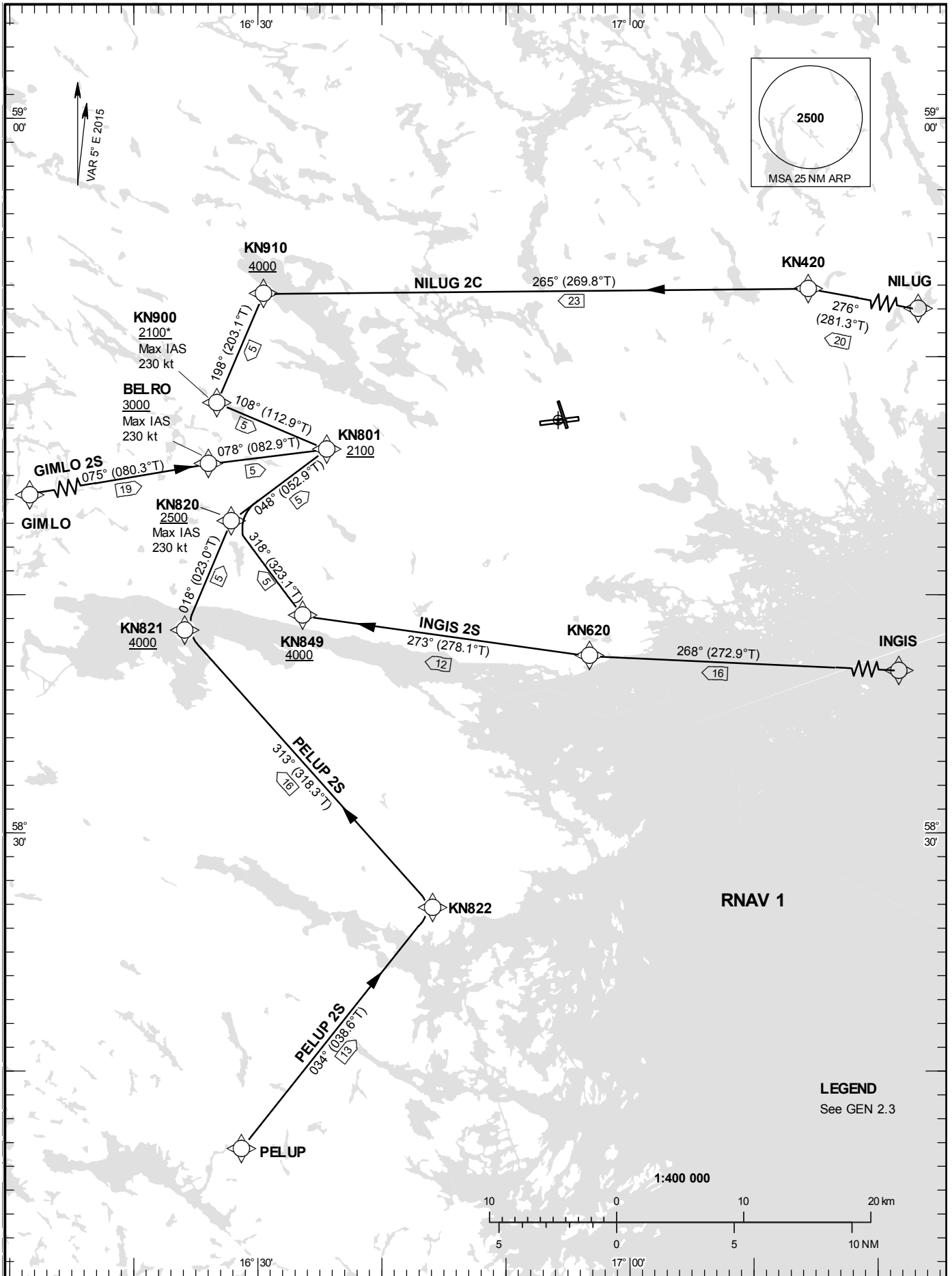


STANDARD INSTRUMENT
ARRIVAL CHART (STAR) -
ICAO

HGT and ALT in ft
BRG are MAG (True)
TA 5000 ft AMSL

SKAVSTA TOWER	127.705
ÖSTGÖTA APPROACH	132.955

RNAV (GNSS) STAR RWY 08



Prescribed Coding of RNAV STAR for RWY 08

GIMLO 2S

Path Desc	Waypoint Identifier	Fly-over	Course °M(°T)	Dist (NM)	Turn Dir	Altitude	Speed	VPA/RDH	Rec Navaid	Navigation Specification
IF	GIMLO	-	-	-	-	-	-	-	-	RNAV 1
TF	BELRO	-	075°(080.3°)	18.7	-	+3000	-230	-	-	RNAV 1
TF	KN801	-	078°(082.9°)	5.0	-	+2100	-	-	-	RNAV 1

STAR instruction: GIMLO – BELRO (max IAS 230 kt, 3000 ft or above) – KN801 (2100 ft or above)

INGIS 2S

Path Desc	Waypoint Identifier	Fly-over	Course °M(°T)	Dist (NM)	Turn Dir	Altitude	Speed	VPA/RDH	Rec Navaid	Navigation Specification
IF	INGIS	-	-	-	-	-	-	-	-	RNAV 1
TF	KN620	-	268°(272.9°)	16.3	-	-	-	-	-	RNAV 1
TF	KN849	-	273°(278.1°)	12.2	-	+4000	-	-	-	RNAV 1
TF	KN820	-	318°(323.1°)	5.0	-	+2500	-230	-	-	RNAV 1
TF	KN801	-	048°(052.9°)	5.0	-	+2100	-	-	-	RNAV 1

STAR instruction: INGIS – KN620 – KN849 (4000 ft or above) – KN820 (max IAS 230 kt, 2500 ft or above) – KN801 (2100 ft or above)

NILUG 2C

Path Desc	Waypoint Identifier	Fly-over	Course °M(°T)	Dist (NM)	Turn Dir	Altitude	Speed	VPA/RDH	Rec Navaid	Navigation Specification
IF	NILUG	-	-	-	-	-	-	-	-	RNAV 1
TF	KN420	-	276°(281.3°)	20.5	-	-	-	-	-	RNAV 1
TF	KN910	-	265°(269.8°)	22.8	-	+4000	-	-	-	RNAV 1
TF	KN900	-	198°(203.1°)	5.0	-	+2100	-230	-	-	RNAV 1
TF	KN801	-	108°(112.9°)	5.0	-	+2100	-	-	-	RNAV 1

STAR instruction: NILUG – KN420 – KN910 (4000 ft or above) – KN900 (max IAS 230 kt, 2100 ft or above) – KN801 (2100 ft or above)

PELUP 2S

Path Desc	Waypoint Identifier	Fly-over	Course °M(°T)	Dist (NM)	Turn Dir	Altitude	Speed	VPA/RDH	Rec Navaid	Navigation Specification
IF	PELUP	-	-	-	-	-	-	-	-	RNAV 1
TF	KN822	-	034°(038.6°)	13.0	-	-	-	-	-	RNAV 1
TF	KN821	-	313°(318.3°)	15.7	-	+4000	-	-	-	RNAV 1
TF	KN820	-	018°(023.0°)	5.0	-	+2500	-230	-	-	RNAV 1
TF	KN801	-	048°(052.9°)	5.0	-	+2100	-	-	-	RNAV 1

STAR instruction: PELUP – KN822 – KN821 (4000 ft or above) – KN820 (max IAS 230 kt, 2500 ft or above) – KN801 (2100 ft or above)