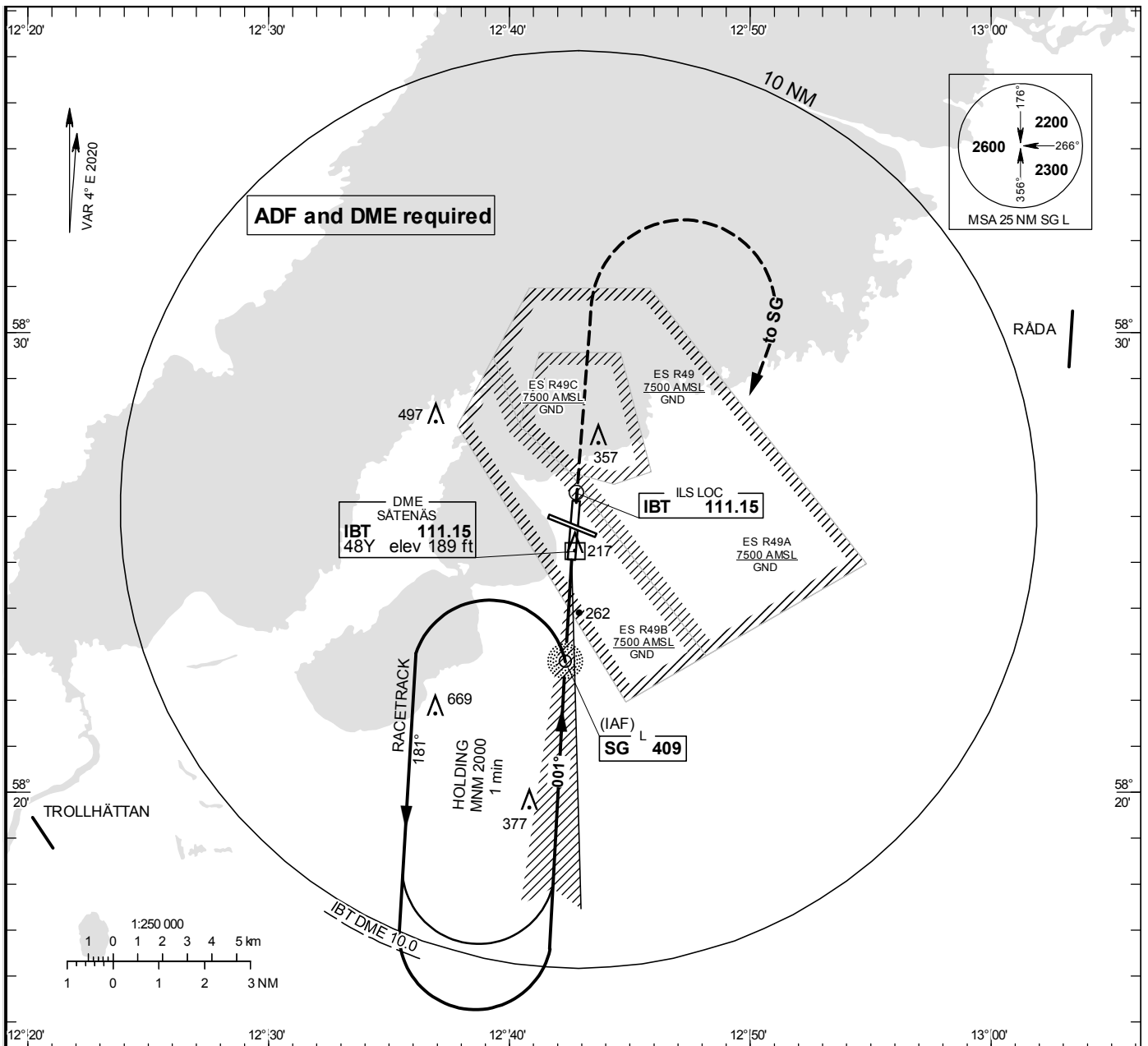


INSTRUMENT APPROACH CHART – ICAO

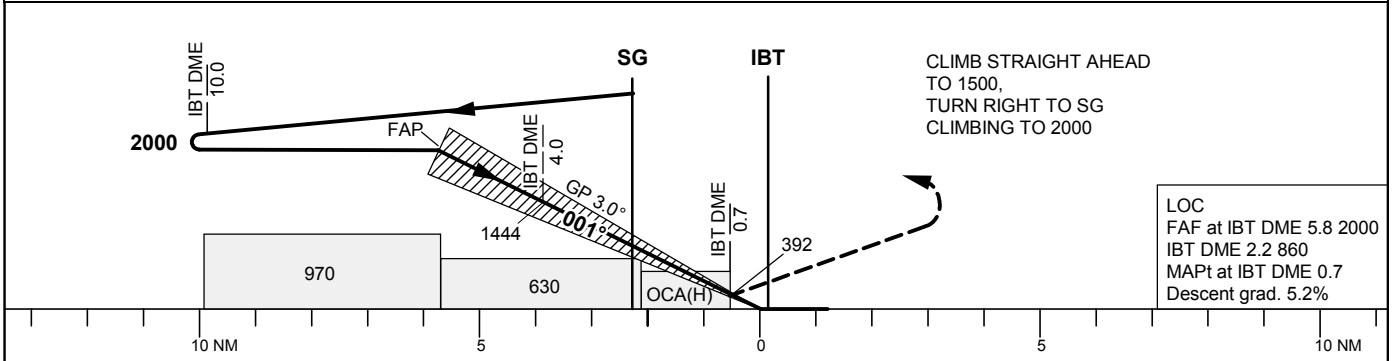
THR ELEV 169.4 ft, AD ELEV 181 ft
 OCH are related to THR.
 Circling OCH are related to AD ELEV.
 BRG are MAG
 ALT, HGT and ELEV in ft.

| | |
|-------------------|---------|
| SÄTENÄS TOWER | 128.200 |
| SÄTENÄS APPROACH | 134.550 |
| SÄTENÄS PRECISION | 119.300 |

ILS or LOC RWY 01



TA 5000 ft AMSL RDH 53.7 ft *Timing not authorized for defining the MAPt



| OCA (H) | | | | | Final approach | | LOC Distance FAF-MAPt 5.1 NM* | | | | | |
|----------------------|----------|----------|----------|-----------|-----------------|--------|-------------------------------|------|------|------|------|------|
| Cat of ACFT | A | B | C | D | DME IBT NM | 5 | 4 | 3 | 2 | 1 | | |
| Straight-in Approach | 312(143) | 322(153) | 335(166) | 348(179) | 1750 | 1430 | 1110 | 790 | | | | |
| Circling | 660(480) | 660(480) | 900(720) | 1070(890) | | | | | | | | |
| | 510(350) | | | | | | | | | | | |
| | | | | | ALT | kt | 80 | 100 | 120 | 140 | 160 | 180 |
| | | | | | Time | min:s | 4:14 | 3:23 | 2:49 | 2:25 | 2:07 | 1:53 |
| | | | | | Rate of descent | ft/min | 425 | 530 | 635 | 745 | 850 | 955 |