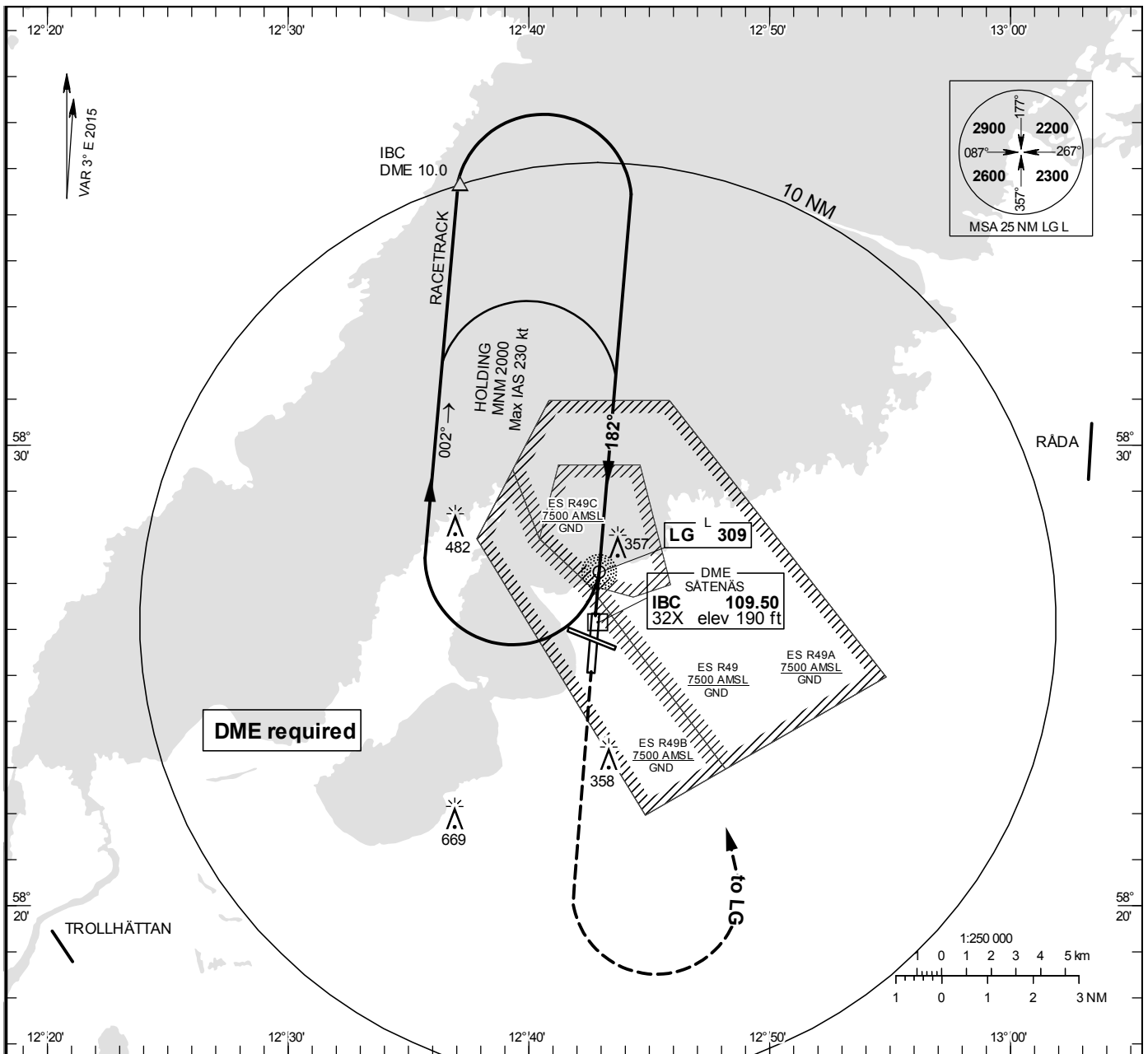


**INSTRUMENT  
APPROACH  
CHART – ICAO**

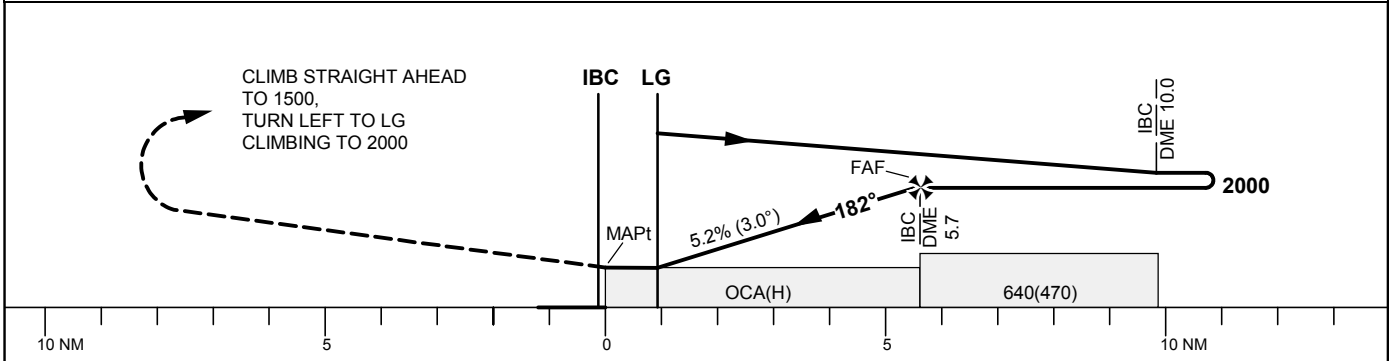
**THR ELEV 175.3 ft, AD ELEV 181 ft**  
 OCH are related to THR.  
 Circling OCH are related to AD ELEV.  
 BRG are MAG  
 ALT. HGT and ELEV in ft.

SÄTENÄS TOWER	128.200
SÄTENÄS APPROACH	134.550

**NDB RWY 19**



**TA 5000 ft AMSL** Max speed within racetrack 230 kt IAS



OCA (H)					Final approach				Distance FAF-MAPt 5.6 NM											
Cat of ACFT	A	B	C	D	DME IBC NM	5	4	3	2	5	4	3	2							
Straight-in Approach	610 (440)				ALT	1770	1450	1130	820	GS	kt	80	100	120	140	160	180			
Circling	660 (480)	660 (480)	900 (720)	1070 (890)	Time	min:s	4:11	3:21	2:47	2:23	2:05	1:52	Rate of descent	ft/min	425	535	640	745	850	960