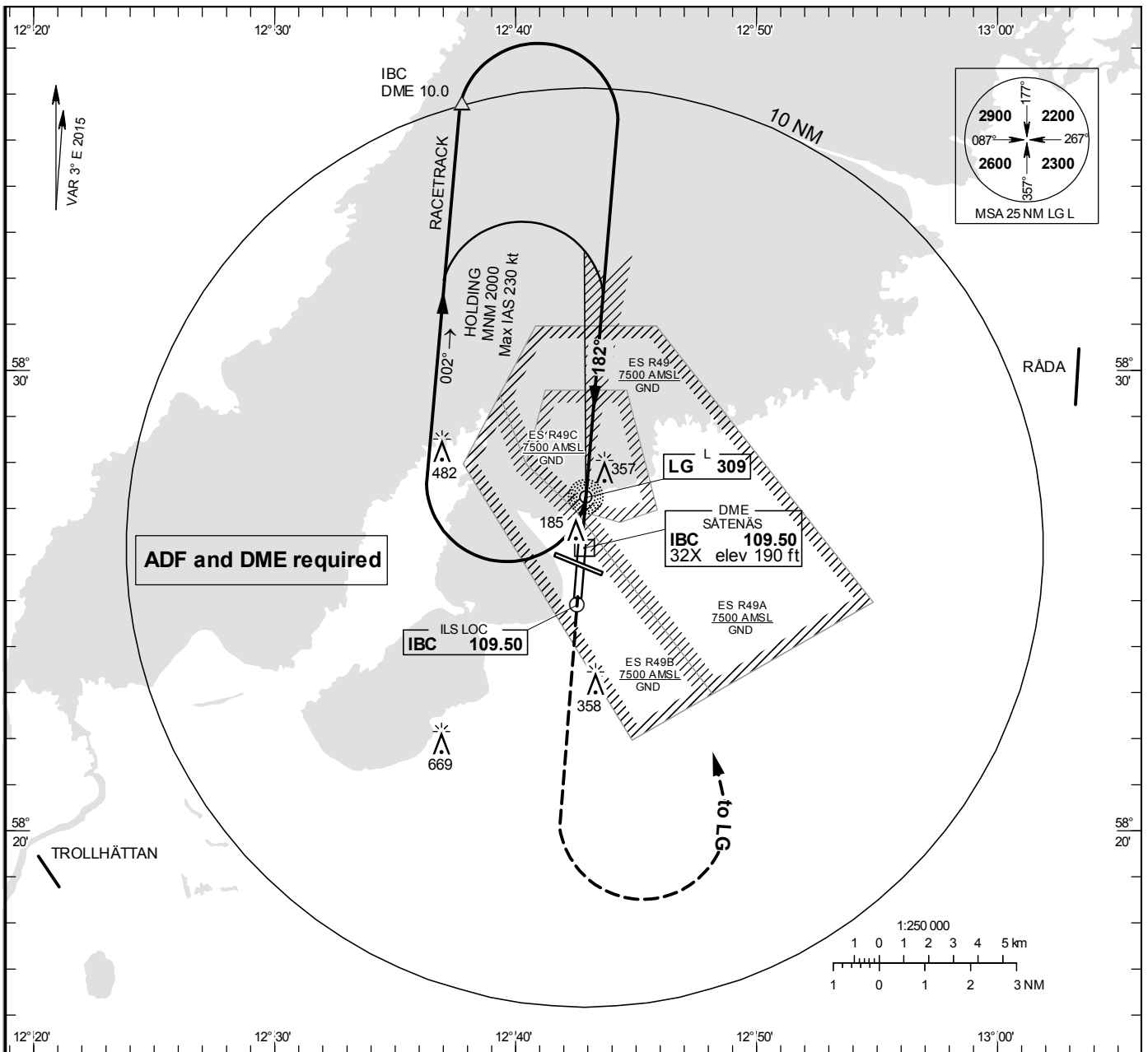


**INSTRUMENT APPROACH CHART – ICAO**

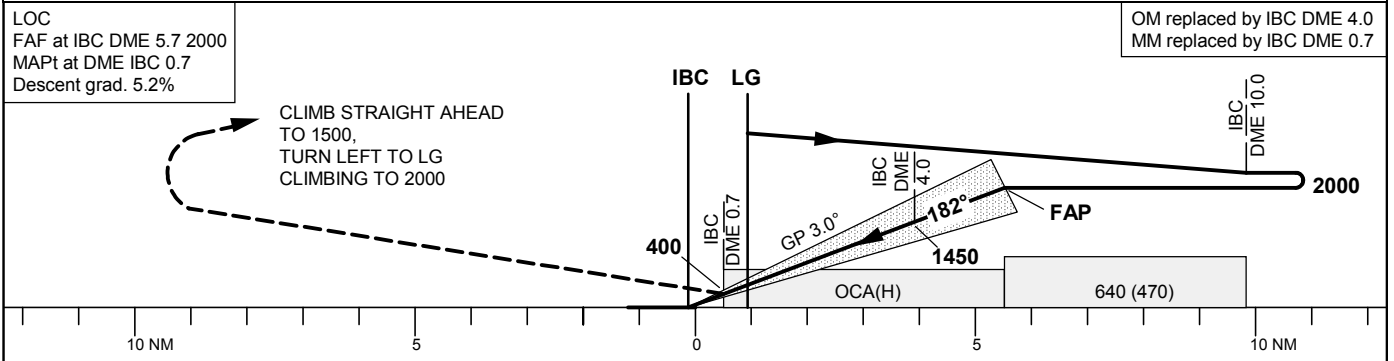
**THR ELEV 175.3 ft, AD ELEV 181 ft**  
 OCH are related to THR.  
 Circling OCH are related to AD ELEV.  
 BRG are MAG  
 ALT. HGT and ELEV in ft.

SÄTENÄS TOWER	128.200
SÄTENÄS APPROACH	134.550
SÄTENÄS PRECISION	119.300

**ILS or LOC RWY 19**



**TA 5000 ft AMSL**    **RDH 50.5 ft**    **Max speed within racetrack 230 kt IAS**    **\*Timing not authorized for defining the MAPt**



		OCA (H)				Final approach				LOC Distance FAF-MAPt 5.0 NM*				
		A	B	C	D	DME IBC NM	5	4	3	2				
Straight-in Approach	Cat I	318 (143)	327 (152)	336 (161)	347 (172)	ALT	1770	1450	1140	820				
	LOC	550 (380)				GS	kt	80	100	120	140	160	180	
Circling		660 (480)	660 (480)	900 (720)	1070 (890)	Time	min:s	3:46	3:01	2:31	2:09	1:53	1:41	
						Rate of descent	ft/min	425	535	640	745	850	960	