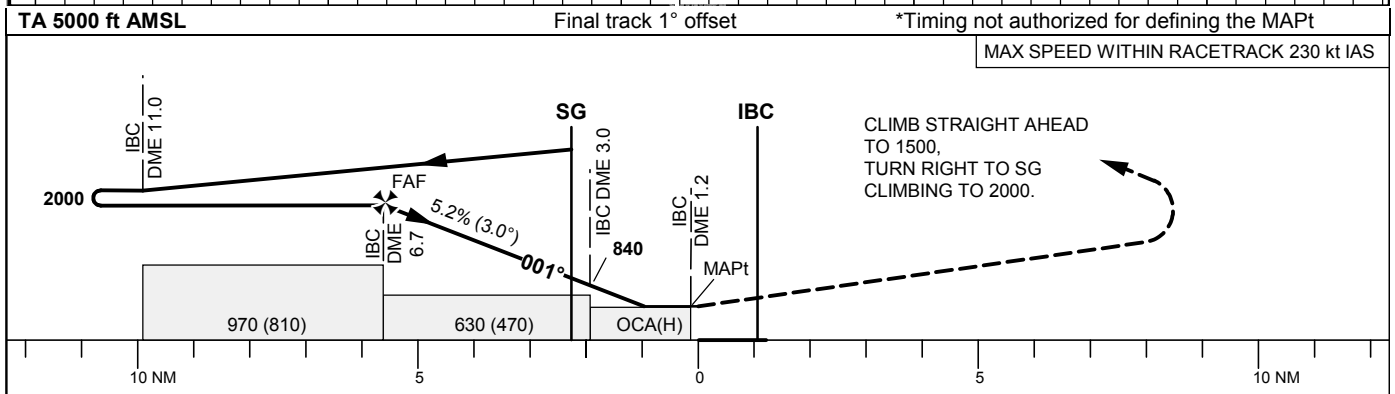
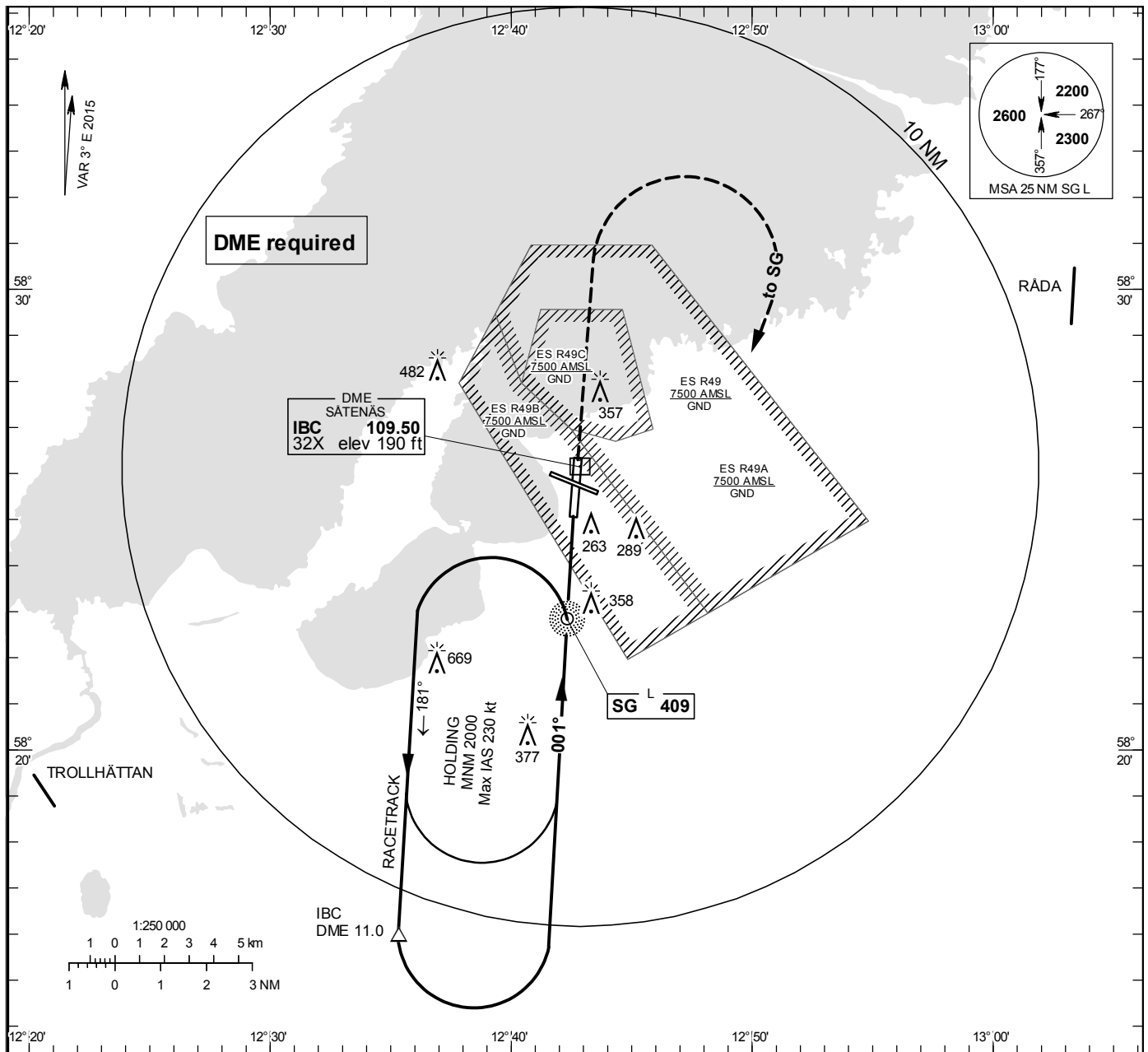


NDB RWY 01

SÄTENÄS TOWER	128.200
SÄTENÄS APPROACH	134.550

THR ELEV 169.4 ft, AD ELEV 181 ft  
 OCH are related to THR.  
 Circling OCH are related to AD ELEV.  
 BRG are MAG  
 ALT. HGT and ELEV in ft.

INSTRUMENT  
APPROACH  
CHART – ICAO



Cat of ACFT	OCA (H)				Final approach Distance FAF-MAPt 5.5 NM*							
	A	B	C	D	DME IBC NM	6	5	4	3			
Straight-in Approach	540 (380)				ALT	1800	1480	1160	840			
Circling	660 (480)	660 (480)	900 (720)	1070 (890)	GS	kt	80	100	120	140	160	180
					Time	min:s	4:06	3:17	2:44	2:20	2:03	1:49
					Rate of descent	ft/min	425	535	640	745	850	960