

**VISUAL APPROACH CHART - ICAO**

1:250000



**AD ELEV 742 FEET**

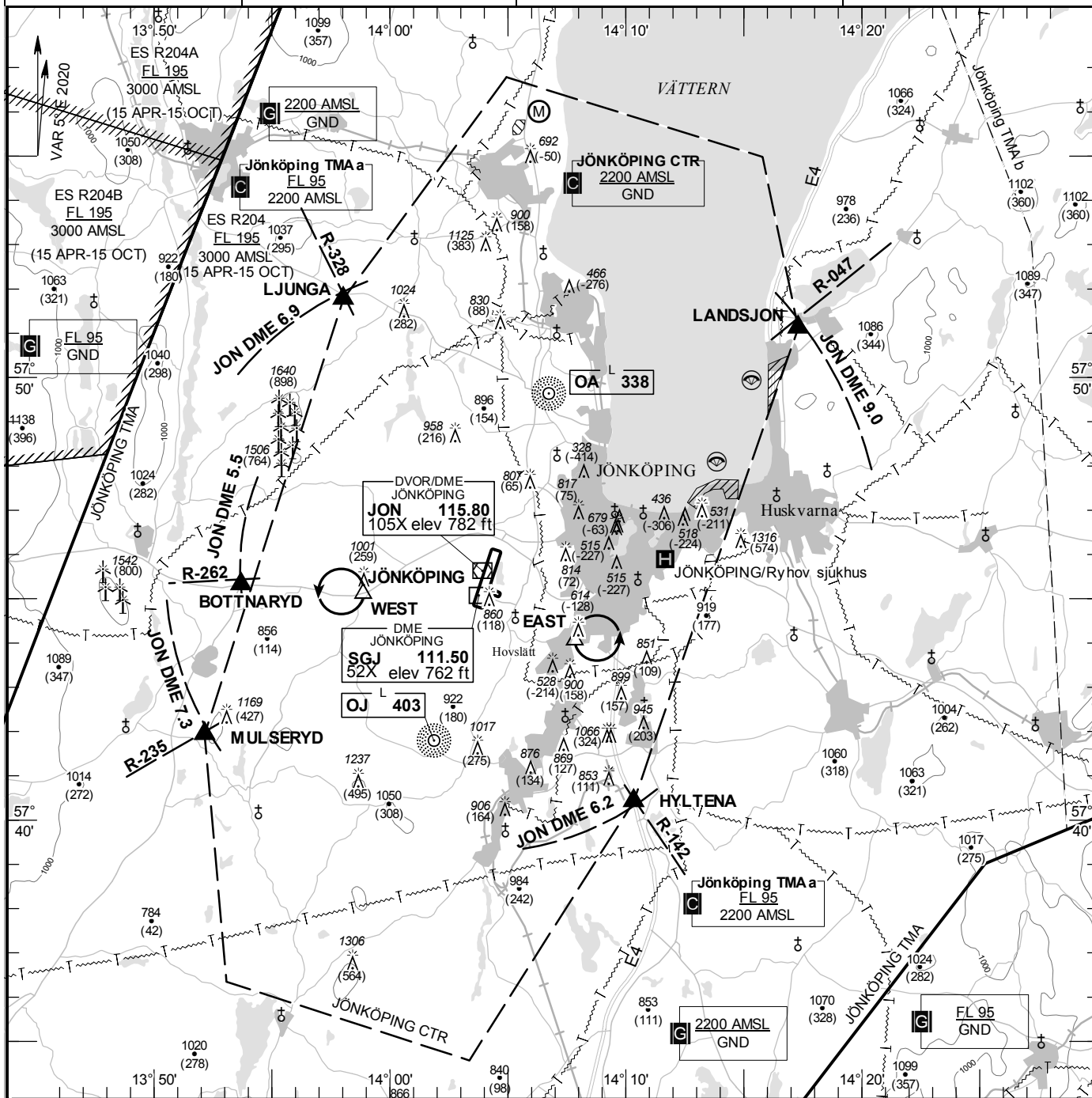
ELEV and ALT in ft  
HGT in ft above AD ELEV

**TA 5000 AMSL**

**JÖNKÖPING TOWER 118.255**

**AD 2 ESGJ 6-1**

**JÖNKÖPING SWEDEN**



**Communication failure**

- 1 SQUAWK 7600
- 2 Enter CTR via BOTTNARYD – Holding WEST at or below 2200 ft AMSL to traffic circuit. Transmit blind your intentions.
- 3 Flash LDG-lights and watch TWR for optical signals.

RWY NR	THR ELEV	PAPI (MEHT)
01	734.3 ft	Left/3.00° (56 ft)
19	739.1 ft	Left/3.00° (60 ft)

**Entry / exit point**

LJUNGA	575146N 0135801E
LANDSJON	575107N 0141718E
HYLTENA	574025N 0141020E
MULSERYD	574156N 0135209E
BOTTNARYD	574519N 0135341E

**Remark**

Model flying area 500 ft GND  
Paragliding area 500 ft GND

Minimum altitude in traffic circuit is 500 ft GND except west of RWY 01/19 during the period 1 MAR-30 SEP when minimum altitude is 700 ft GND.

**Legend**

See GEN 2.3

**Holding**

**EAST:** Hold at Hovslätt, east of railway, above five circle constructed buildings, east of point 574403N 0140750E

**WEST:** Hold at crossroad, west of point 574506N 0135851E