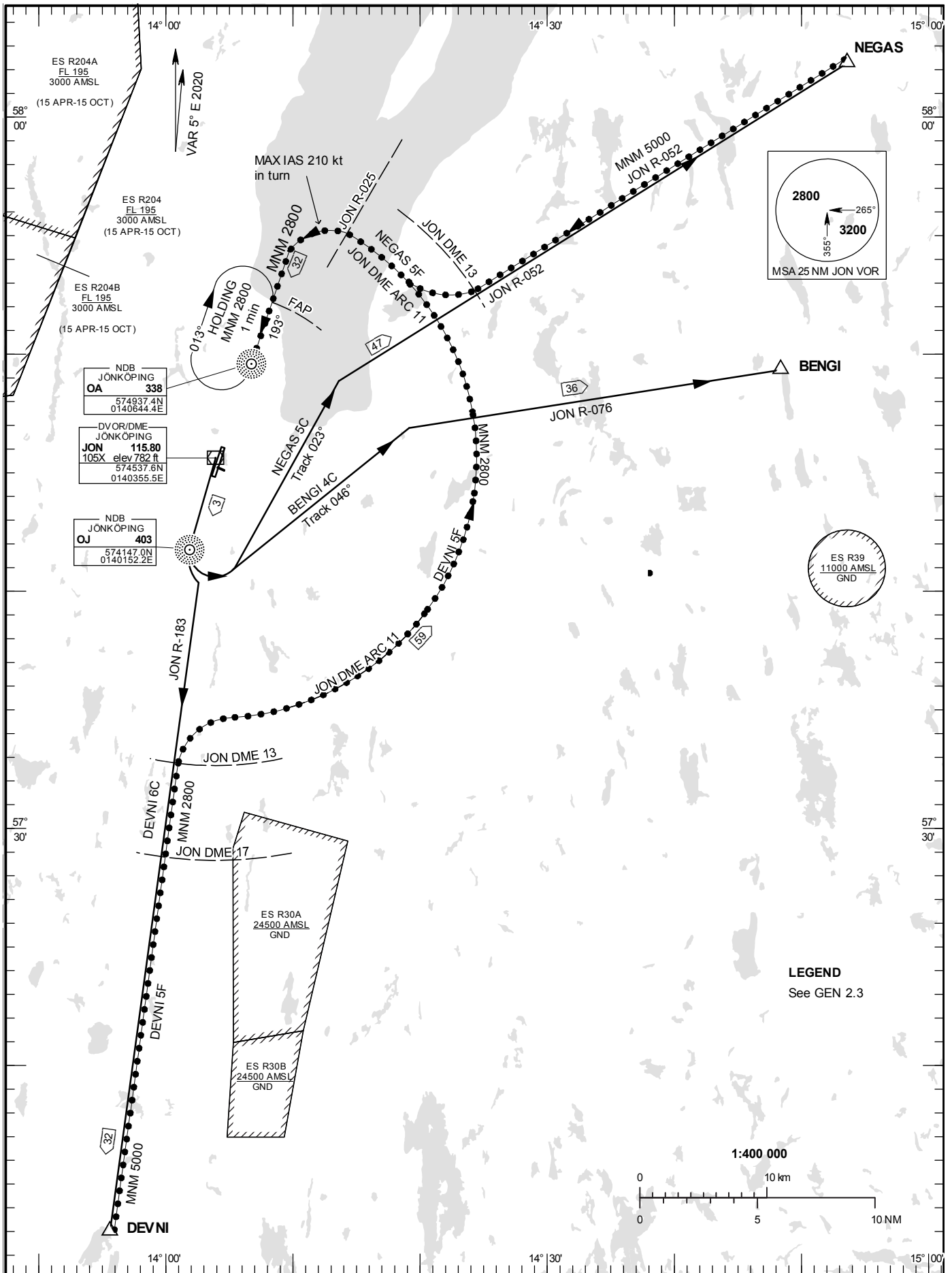


STANDARD INSTRUMENT  
DEPARTURE AND ARRIVAL  
CHART (SID/STAR) - ICAO

HGT and ALT in ft  
BRG are MAG  
TA 5000 ft AMSL

JÖNKÖPING TOWER 118.255

RWY 19



## DEPARTURE (SID) RWY 19

### BENGI FOUR CHARLIE DEPARTURE (BENGI 4C)

Straight ahead to OJ, turn left to track 046°. Intercept JON R-076 and proceed to BENGI.

### DEVNI SIX CHARLIE DEPARTURE (DEVNI 6C)

Straight ahead to OJ, intercept JON R-183 and proceed to DEVNI.

### NEGAS FIVE CHARLIE DEPARTURE (NEGAS 5C)

Straight ahead to OJ, turn left to track 023°. Intercept JON R-052 and proceed to NEGAS.

## ARRIVAL (STAR) RWY 19

### REMARK

Descent to minimum altitude for an arrival route must not be initiated until an ATC clearance to this altitude or an approach clearance has been received.

### DEVNI FIVE FOXTROT ARRIVAL (DEVNI 5F)

At DEVNI intercept JON R-183, not below 5000 ft until JON DME 17. At JON DME 13 turn right and proceed on JON DME ARC 11, not below 2800 ft. At JON R-025 turn left to intercept LOC SJ, not below 2800 ft until FAP.

### NEGAS FIVE FOXTROT ARRIVAL (NEGAS 5F)

At NEGAS intercept JON R-052, and proceed to JON DME 13, not below 5000 ft. Turn right and intercept JON DME ARC 11, not below 2800 ft. At JON R-025 turn left to intercept LOC SJ, not below 2800 ft until FAP.