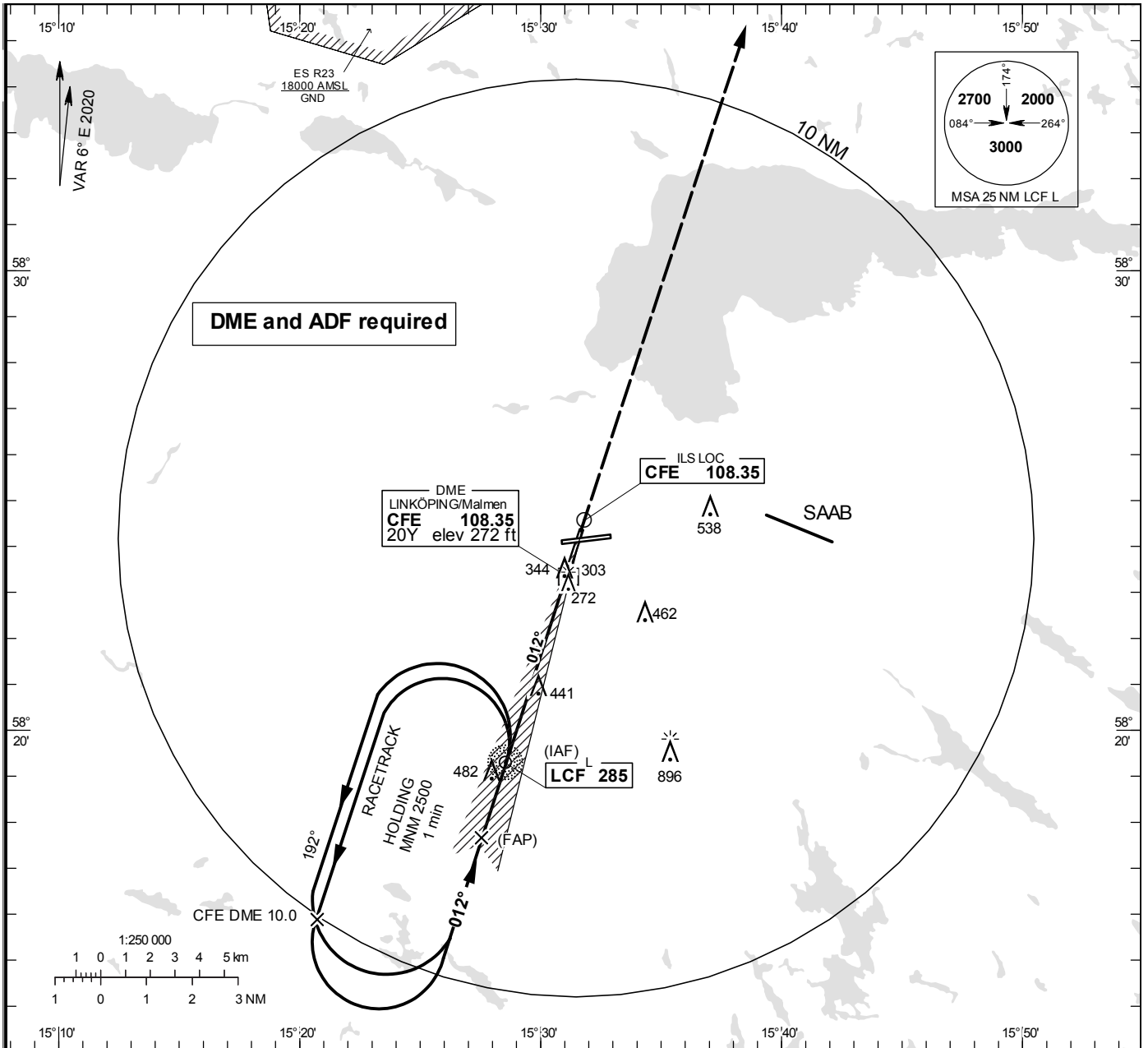


INSTRUMENT APPROACH CHART – ICAO

THR ELEV 250.7 ft, AD ELEV 309 ft
 OCH are related to THR.
 Circling OCH are related to AD ELEV.
 BRG are MAG
 ALT, HGT and ELEV in ft.

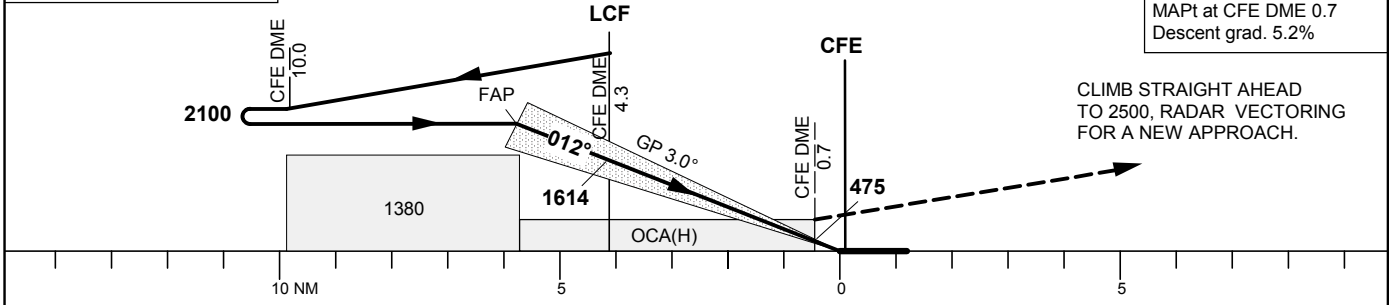
MALMEN TOWER	129.800
ÖSTGÖTA APPROACH	132.955
	135.850

ILS or LOC RWY 01



TA 5000 ft AMSL **RDH 50.0 ft** **Max speed within racetrack IAS 220 kt** ***Timing not authorized for defining the MAPt**

OM replaced by CFE DME 4.3
 MM replaced by CFE DME 0.7



OCA (H)					Final approach	LOC Distance FAF-MAPt 5.1 NM*							
Cat of ACFT	A	B	C	D	DME CFE NM	5	4	3	2				
Straight-in Approach	Cat I	409(159)	418(168)	430(180)	443(193)	ALT	1850	1530	1210	890			
	LOC	730(480)				GS	kt	80	100	120	140	160	180
Circling		760(460)	840(540)	940(640)	1290(990)	Time	min:s	3:50	3:04	2:33	2:11	1:55	1:42
						Rate of descent	ft/min	425	530	635	745	850	955