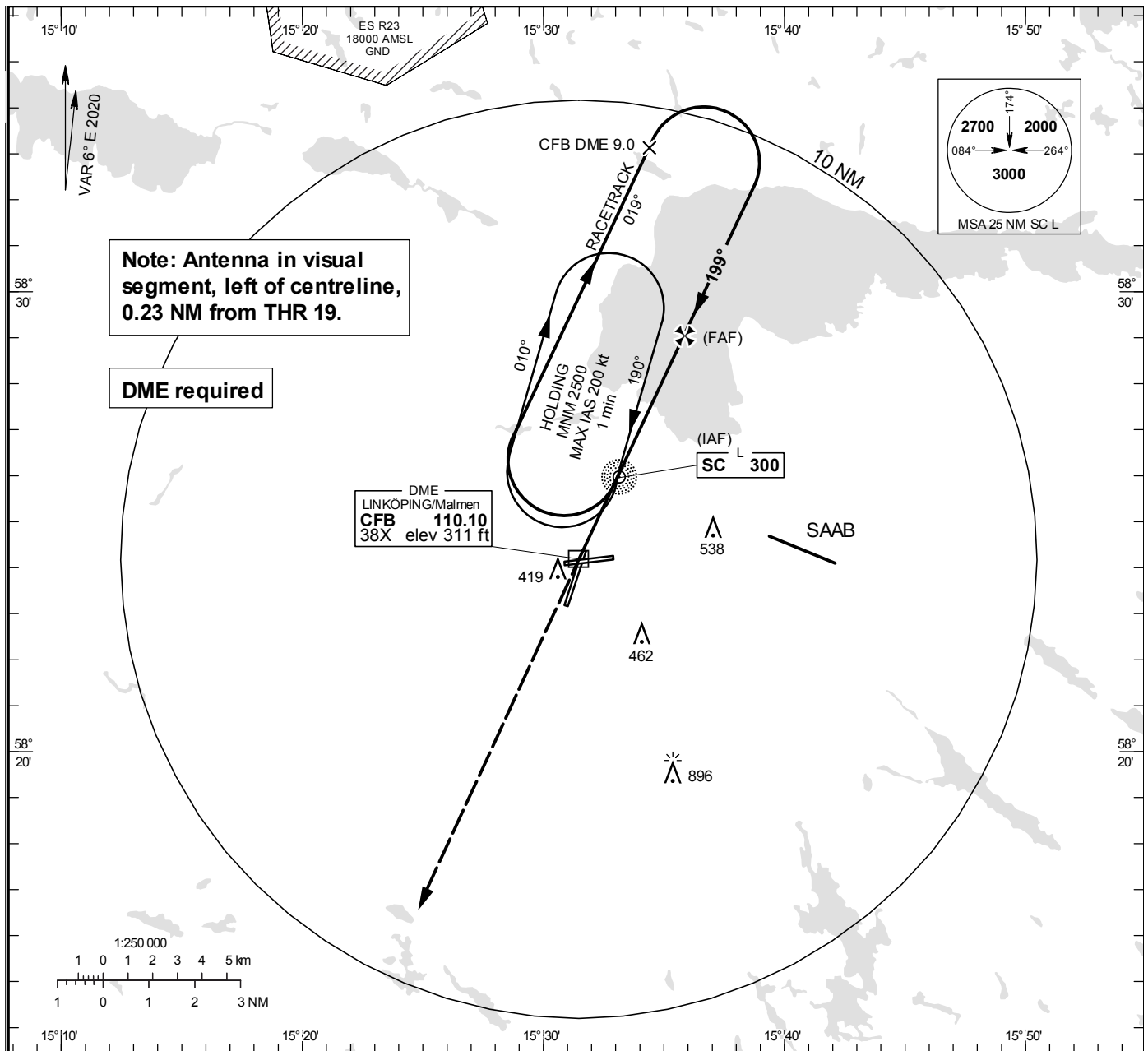


NDB RWY 19

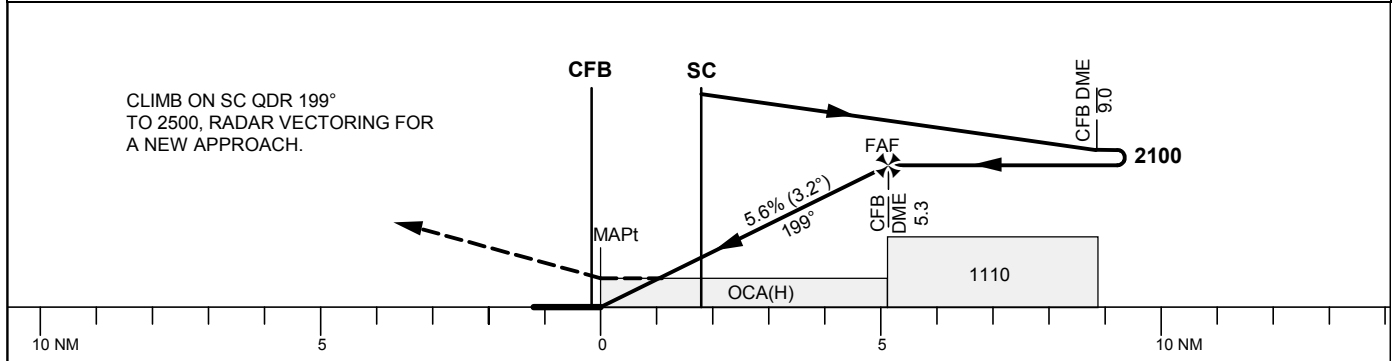
MALMEN TOWER	129.800
ÖSTGÖTA APPROACH	132.955
	135.850

THR ELEV 295.4 ft, AD ELEV 309 ft
 OCH are related to THR.
 Circling OCH are related to AD ELEV.
 BRG are MAG
 ALT, HGT and ELEV in ft.

INSTRUMENT
APPROACH
CHART – ICAO



TA 5000 ft AMSL Final APCH line 7° offset Max speed within racetrack 200 kt IAS



Cat of ACFT	OCA (H)				Final approach				Distance FAF-MAPt 5.2 NM								
	A	B	C	D	DME CFB NM	5	4	3	2	5	4	3	2				
Straight-in Approach	670(380)				ALT	1980	1650	1310	970	GS	kt	80	100	120	140	160	180
Circling	760(460)	840(540)	940(640)	1290(990)	Time	min:s	3:50	3:04	2:34	2:12	1:55	1:42					
					Rate of descent	ft/min	455	565	680	795	905	1020					