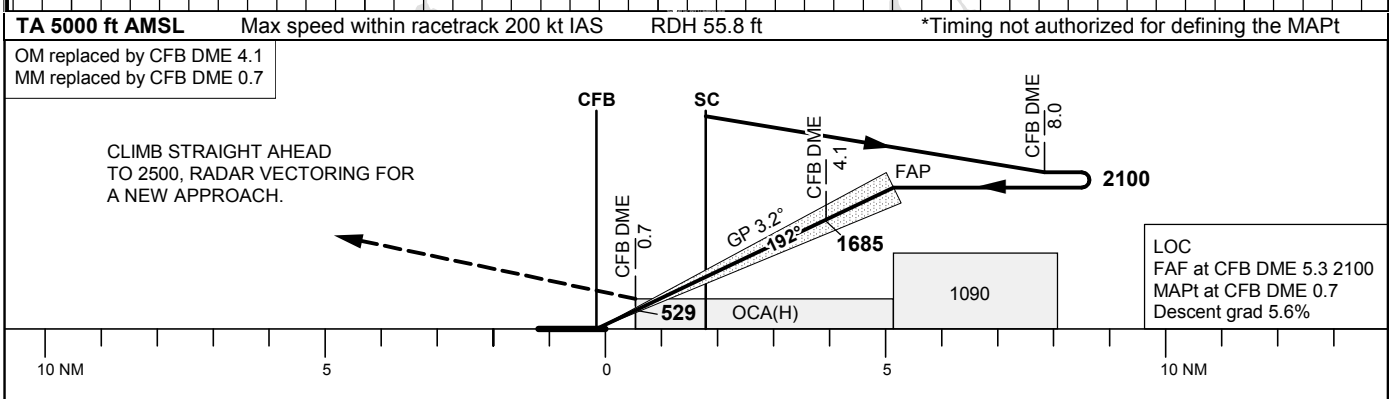
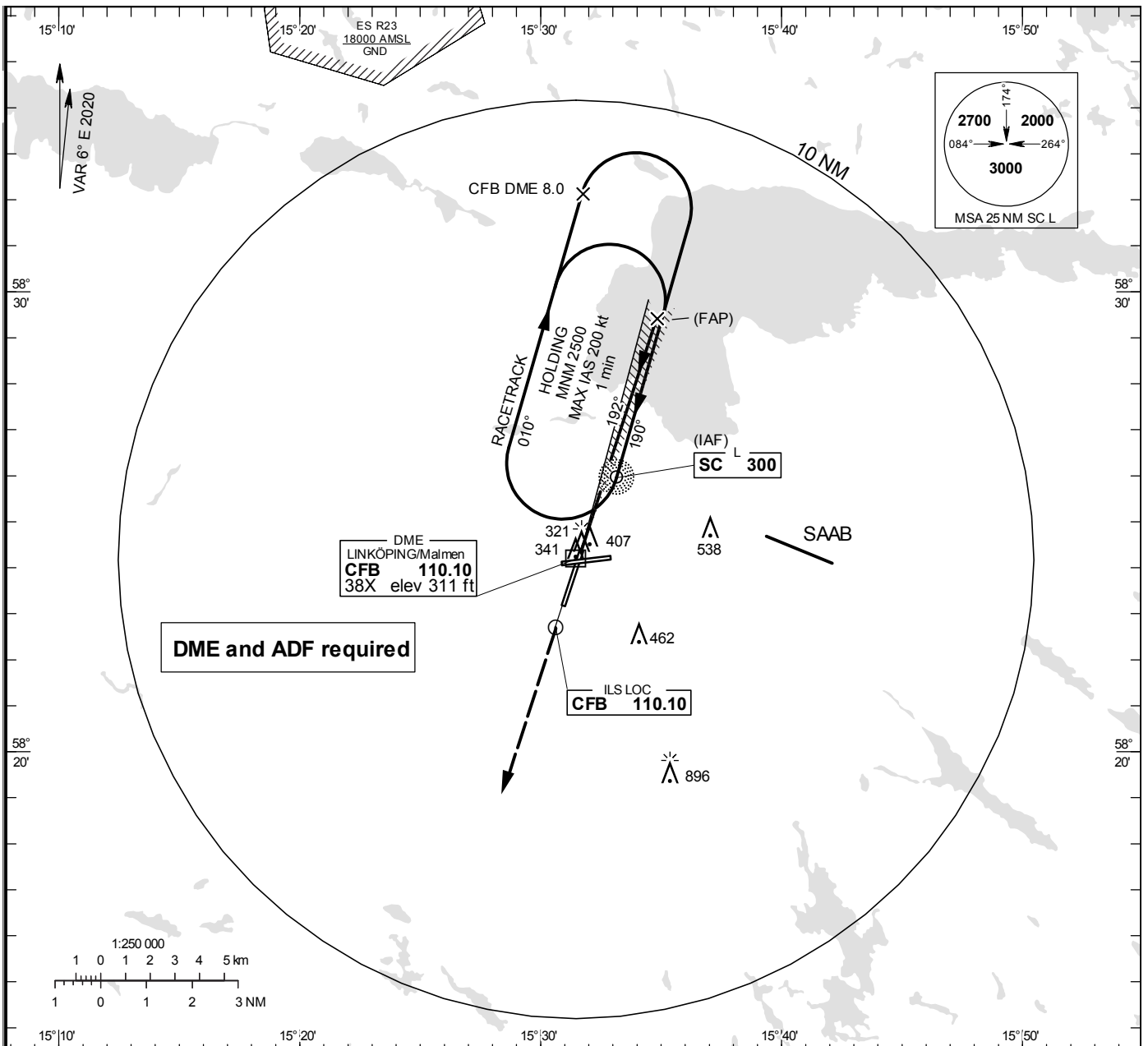


**INSTRUMENT  
APPROACH  
CHART – ICAO**

**THR ELEV 295.4 ft, AD ELEV 309 ft**  
 OCH are related to THR.  
 Circling OCH are related to AD ELEV.  
 BRG are MAG  
 ALT, HGT and ELEV in ft.

MALMEN TOWER	129.800
ÖSTGÖTA APPROACH	132.955
	135.850

**ILS or LOC RWY 19**



OCA (H)					Final approach		LOC Distance FAF-MAPt 4.6 NM*					
Cat of ACFT	A	B	C	D	DME CFB NM	5	4	3	2			
Straight-in Approach	Cat I	457(162)	465(170)	475(180)	485(190)	ALT	1990	1650	1310	970		
	LOC	640(350)				GS	kt	80	100	120	140	160
Circling	760(460)	840(540)	940(640)	1290(990)	Time	min:s	3:28	2:47	2:19	1:59	1:44	1:33
					Rate of descent	ft/min	455	565	680	795	905	1020