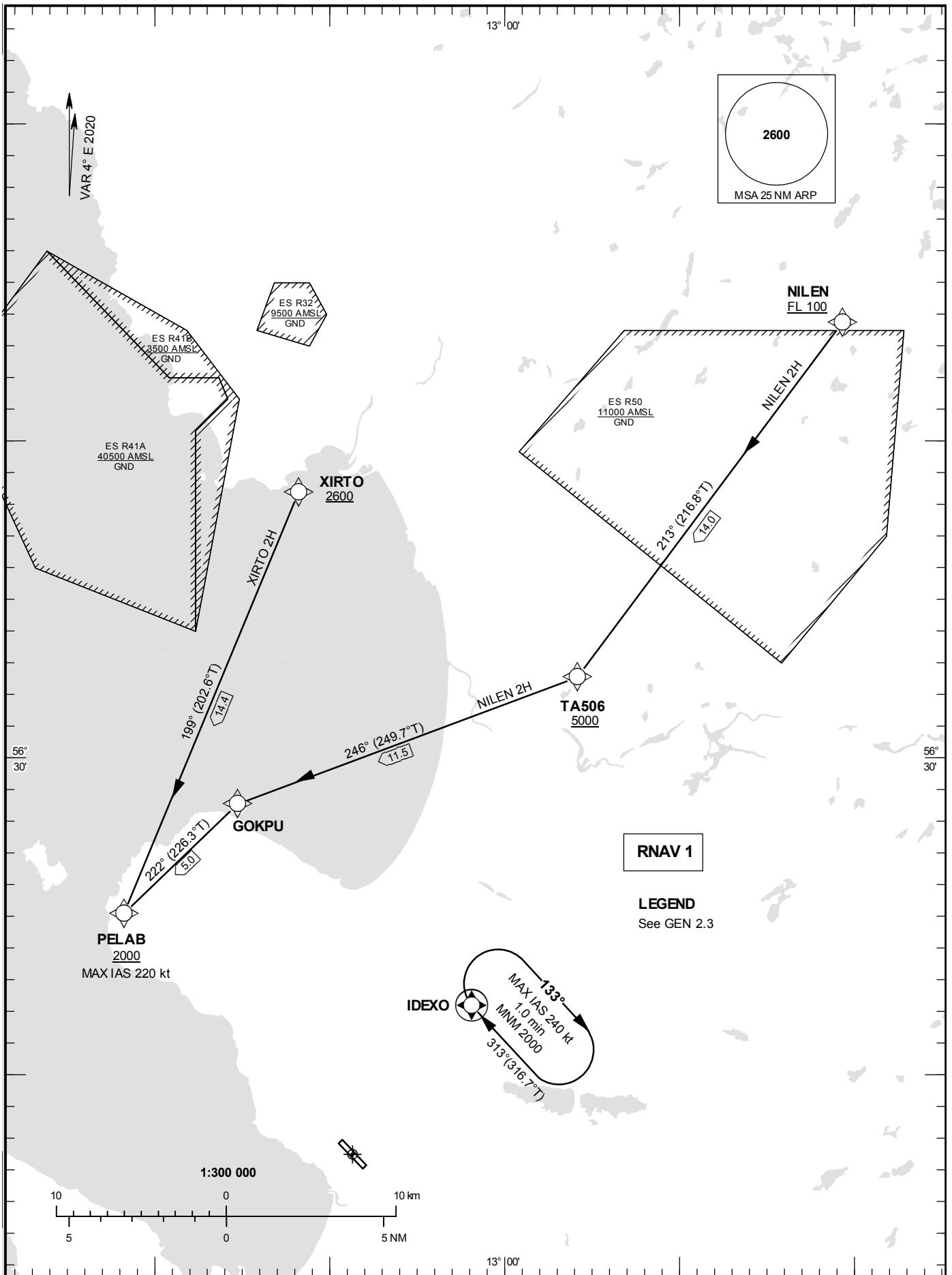


STANDARD INSTRUMENT
ARRIVAL CHART (STAR) -
ICAO

HGT and ALT in ft
BRG are MAG (True)
TA 5000 ft AMSL

ÄNGELHOLM TOWER	127.105
ÄNGELHOLM CONTROL	132.455

RNAV (GNSS) STAR RWY 14



Prescribed Coding of RNAV (GNSS) STAR RWY 14

NILEN 2H

Path Term	Waypoint Identifier	Fly-over	Course °M(°T)	Dist (NM)	Turn Dir	Altitude (ft)	Speed Limits (kt)	VPA/RDH (°/ft)	Rec Navaid	Navigation Specification
IF	NILEN	-	-	-	-	+FL100	-	-	-	RNAV 1
TF	TA506	-	213° (216.8°)	14.0	-	+5000	-	-	-	RNAV 1
TF	GOKPU	-	246° (249.7°)	11.5	-	-	-	-	-	RNAV 1
TF	PELAB	-	222° (226.3°)	5.0	-	+2000	-220	-	-	RNAV 1

STAR instruction: NILEN (FL100 or above) – TA506 (5000 ft or above) – GOKPU – PELAB (Max IAS 220 kt, 2000 ft or above)

XIRTO 2H

Path Term	Waypoint Identifier	Fly-over	Course °M(°T)	Dist (NM)	Turn Dir	Altitude (ft)	Speed Limits (kt)	VPA/RDH (°/ft)	Rec Navaid	Navigation Specification
IF	XIRTO	-	-	-	-	+2600	-	-	-	RNAV 1
TF	PELAB	-	199° (202.6°)	14.4	-	+2000	-220	-	-	RNAV 1

STAR instruction: XIRTO (2600 ft or above) – PELAB (Max IAS 220 kt, 2000 ft or above)