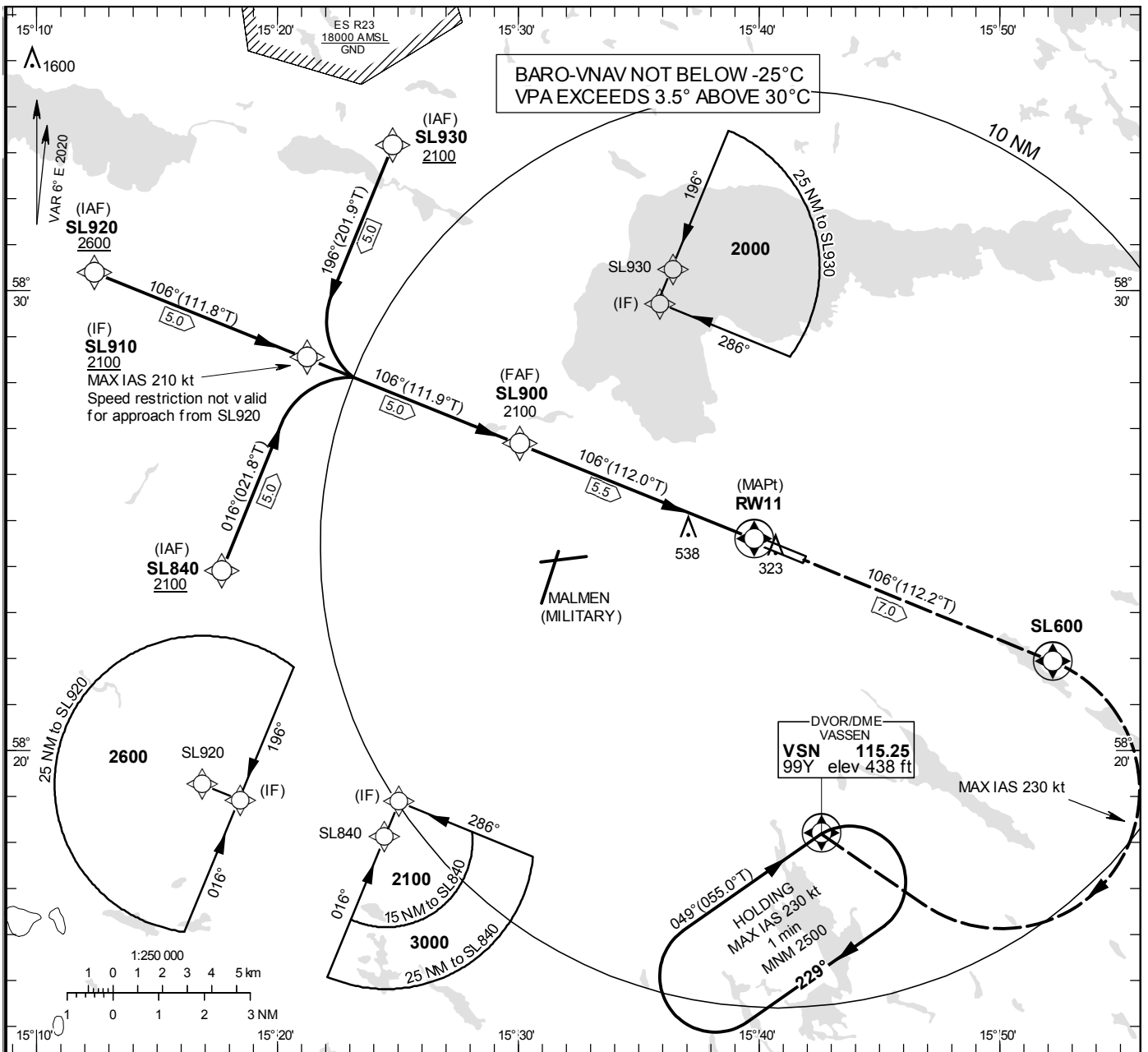


**INSTRUMENT
APPROACH
CHART – ICAO**

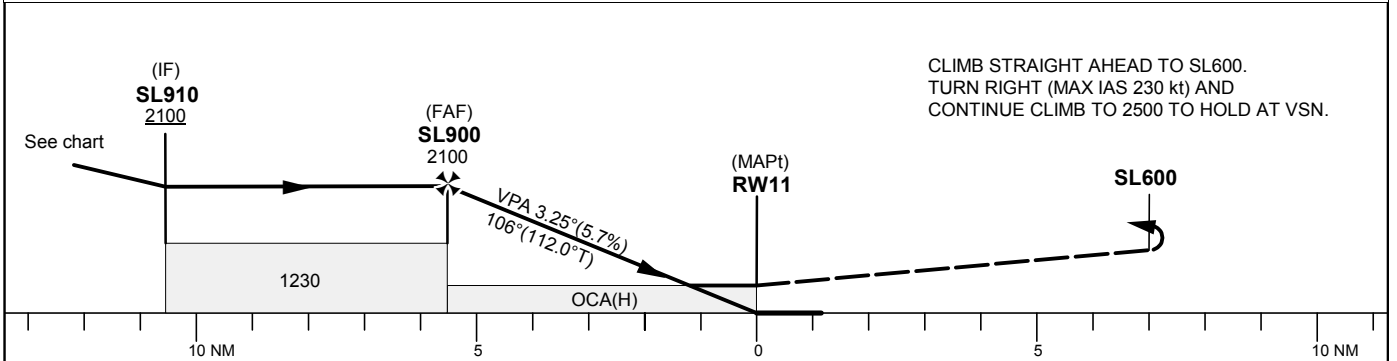
THR ELEV 142.8 ft, AD ELEV 173 ft
 OCH are related to THR.
 BRG are MAG (True).
 ALT, HGT and ELEV in ft.

SAAB TOWER	118.805
ÖSTGÖTA CONTROL	132.955
	135.850

RNP RWY 11
EGNOS Ch 93119 E 11A



TA 5000 ft AMSL RDH 50 ft



Cat of ACFT	OCA (H)				Final approach Dist to RW11 NM	Distance FAF-MAPt 5.5 NM						
	A	B	C	D		5	4	3	2			
LPV	456(314)	469(327)	477(335)	489(347)	1920	1580	1230	890				
LNAV/VNAV	680(540)	690(550)	700(560)	710(570)	GS	kt	80	100	120	140	160	180
LNAV	790(650)				Rate of descent	ft/min	460	575	690	805	920	1035

RNP RWY 11 via SL920

Path Desc	Waypoint Identifier	Fly-over	Course °M(°T)	Dist (NM)	Turn Dir	Altitude	Speed	VPA/RDH	Rec Navaid	Navigation Specification
IF	SL920	-	-	-	-	+2600	-	-	-	RNP APCH
TF	SL910	-	106°(111.8°)	5.0	-	+2100	-	-	-	RNP APCH

RNP RWY 11 via SL840

Path Desc	Waypoint Identifier	Fly-over	Course °M(°T)	Dist (NM)	Turn Dir	Altitude	Speed	VPA/RDH	Rec Navaid	Navigation Specification
IF	SL840	-	-	-	-	+2100	-	-	-	RNP APCH
TF	SL910	-	016°(021.8°)	5.0	-	+2100	-210	-	-	RNP APCH

RNP RWY 11 via SL930

Path Desc	Waypoint Identifier	Fly-over	Course °M(°T)	Dist (NM)	Turn Dir	Altitude	Speed	VPA/RDH	Rec Navaid	Navigation Specification
IF	SL930	-	-	-	-	+2100	-	-	-	RNP APCH
TF	SL910	-	196°(201.9°)	5.0	-	+2100	-210	-	-	RNP APCH

Path Desc	Waypoint Identifier	Fly-over	Course °M(°T)	Dist (NM)	Turn Dir	Altitude	Speed	VPA/RDH	Rec Navaid	Navigation Specification
IF	SL910	-	-	-	-	+2100	-	-	-	RNP APCH
TF	SL900	-	106°(111.9°)	5.0	-	@2100	-	-	-	RNP APCH
TF	RW11	Y	106°(112.0°)	5.5	-	@193	-	-3.25/50	-	RNP APCH
TF	SL600	Y	106°(112.2°)	7.0	-	-	-230	-	-	RNP APCH
DF	VSN	Y	-	-	R	+2500	-230	-	-	RNP APCH
HM	VSN	Y	049°(055.0°)	-	R	+2500	-230	-	-	RNAV 1

FAS Data Block

RNP RWY 11

Input data

Operation Type	0
SBAS Provider	1
Airport Identifier	ESSL
Runway	11
Runway Direction	0
Approach Performance Designator	0
Route Indicator	
Reference Path Data Selector	0
Reference Path Identifier	E11A
LTP/FTP Latitude	582435.6625N
LTP/FTP Longitude	0153948.0335E
LTP/FTP Ellipsoidal Height (metres)	72.8
FPAP Latitude	582409.6155N
Delta FPAP Latitude (seconds)	-26.0470
FPAP Longitude	0154149.7720E
Delta FPAP Longitude (seconds)	121.7385
Threshold Crossing Height	15.0
TCH Units Selector	1
Glidepath Angle (degrees)	3.25
Course Width (metres)	105.00
Length Offset (metres)	0
HAL (metres)	40.0
VAL (metres)	50.0

Output data

Data Block	10 0C 13 13 05 0B 00 00 01 31 31 05 9D 1A 11 19 83 D3 B8 06 D8 16 82 34 FF 15 B7 03 2C 81 45 01 64 00 C8 FA A1 4D 78 76
Calculated CRC Value	A14D7876

Required Additional Data

ICAO Code	ES
LTP/FTP Orthometric Height (metres)	43.5
FPAP Orthometric Height (metres)	52.7