

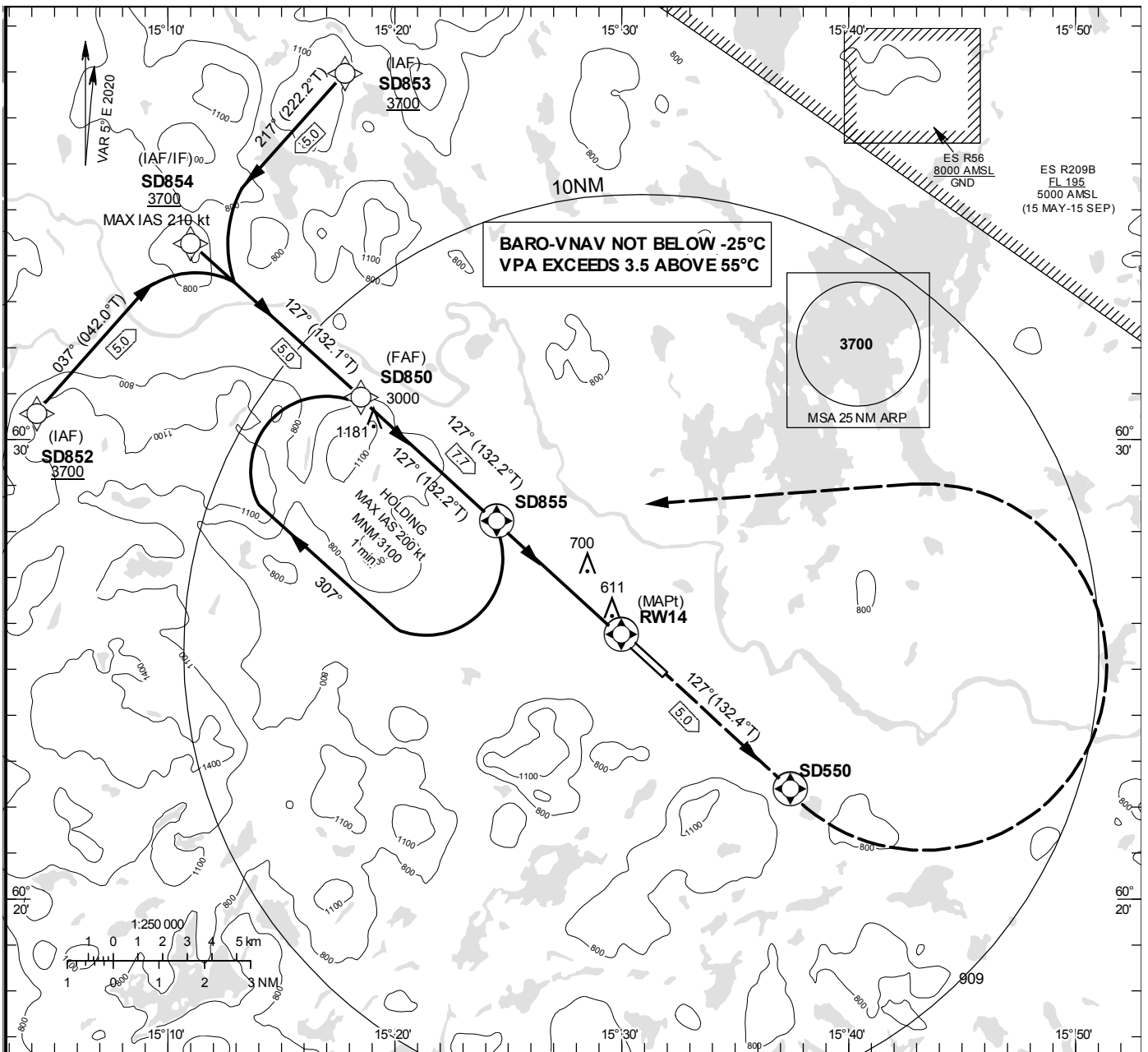
**INSTRUMENT  
APPROACH  
CHART – ICAO**

**THR ELEV 504 ft, AD ELEV 504 ft**  
 OCH are related to THR.  
 BRG are MAG (True).  
 ALT, HGT and ELEV in ft.

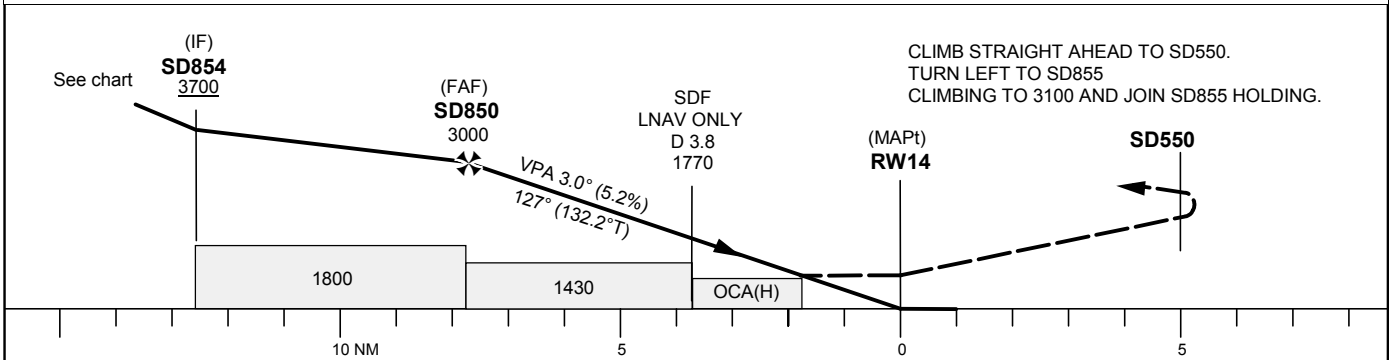
BORLÄNGE TOWER 127.305

RNP RWY 14

EGNOS CH 41218 E 14A



TA 5000 ft AMSL RDH 50 ft



Cat of ACFT	OCA (H)				Final approach Dist to RW14	Distance FAF-MAPt 7.7 NM						
	A	B	C	D		7	6	5	4	3	2	
LPV	742(238)	754(250)	762(258)	772(268)	ALT	2780	2460	2150	1830	1510	1190	
LNAV/VNAV	820(320)	830(330)	840(340)	850(350)	GS	kt	80	100	120	140	160	180
LNAV	930(430)				Rate of descent	ft/min	425	530	635	745	850	955

## RNP RWY 14 via SD852

Path Desc	Waypoint Identifier	Fly-over	Course °M(°T)	Dist (NM)	Turn Dir	Altitude	Speed	VPA/RDH	Rec Navaid	Navigation Specification
IF	SD852	-	-	-	-	+3700	-	-	-	RNP APCH
TF	SD854	-	037°(042.0°)	5.0	-	+3700	-210	-	-	RNP APCH

## RNP RWY 14 via SD853

Path Desc	Waypoint Identifier	Fly-over	Course °M(°T)	Dist (NM)	Turn Dir	Altitude	Speed	VPA/RDH	Rec Navaid	Navigation Specification
IF	SD853	-	-	-	-	+3700	-	-	-	RNP APCH
TF	SD854	-	217°(222.2°)	5.0	-	+3700	-210	-	-	RNP APCH

Path Desc	Waypoint Identifier	Fly-over	Course °M(°T)	Dist (NM)	Turn Dir	Altitude	Speed	VPA/RDH	Rec Navaid	Navigation Specification
IF	SD854	-	-	-	-	+3700	-210	-	-	RNP APCH
TF	SD850	-	127°(132.1°)	5.0	-	@3000	-	-	-	RNP APCH
TF	RW14	Y	127°(132.2°)	7.7	-	@553	-	-3.0/50	-	RNP APCH
TF	SD550	Y	127°(132.4°)	5.0	-	-	-	-	-	RNP APCH
DF	SD855	Y	-	-	L	+3100	-	-	-	RNP APCH

Path Desc	Waypoint Identifier	Fly-over	Course °M(°T)	Dist (NM)	Turn Dir	Altitude	Speed	VPA/RDH	Rec Navaid	Navigation Specification
HM	SD855	Y	127°(132.2°)	-	R	+3100	-200	-	-	RNAV 1

## FAS Data Block

## RNP RWY 14

## Input data

Operation Type	0
SBAS Provider	1
Airport Identifier	ESSD
Runway	14
Runway Direction	0
Approach Performance Designator	0
Route Indicator	
Reference Path Data Selector	0
Reference Path Identifier	E14A
LTP/FTP Latitude	602544.7300N
LTP/FTP Longitude	0152959.5100E
LTP/FTP Ellipsoidal Height (metres)	182.6
FPAP Latitude	602454.3200N
Delta FPAP Latitude (seconds)	-50.4100
FPAP Longitude	0153151.0900E
Delta FPAP Longitude (seconds)	111.5800
Threshold Crossing Height	50.0
TCH Units Selector	0
Glidepath Angle (degrees)	3.00
Course Width (metres)	105.00
Length Offset (metres)	0
HAL (metres)	40.0
VAL (metres)	50.0

## Output data

Data Block	10 04 13 13 05 0E 00 00 01 34 31 05 34 F0 EE 19 AC DD A6 06 22 1B 2C 76 FE B8 67 03 F4 01 2C 01 64 00 C8 FA 97 01 86 34
Calculated CRC Value	97018634

## Required Additional Data

ICAO Code	ES
LTP/FTP Orthometric Height (metres)	153.6
FPAP Orthometric Height (metres)	150.3