

VISUAL APPROACH CHART - ICAO

1:250000
1 0 1 2 3 4 5 km
1 0 1 2 3 NM

AD ELEV 25 FEET

ELEV and ALT in ft
HGT in ft above AD ELEV

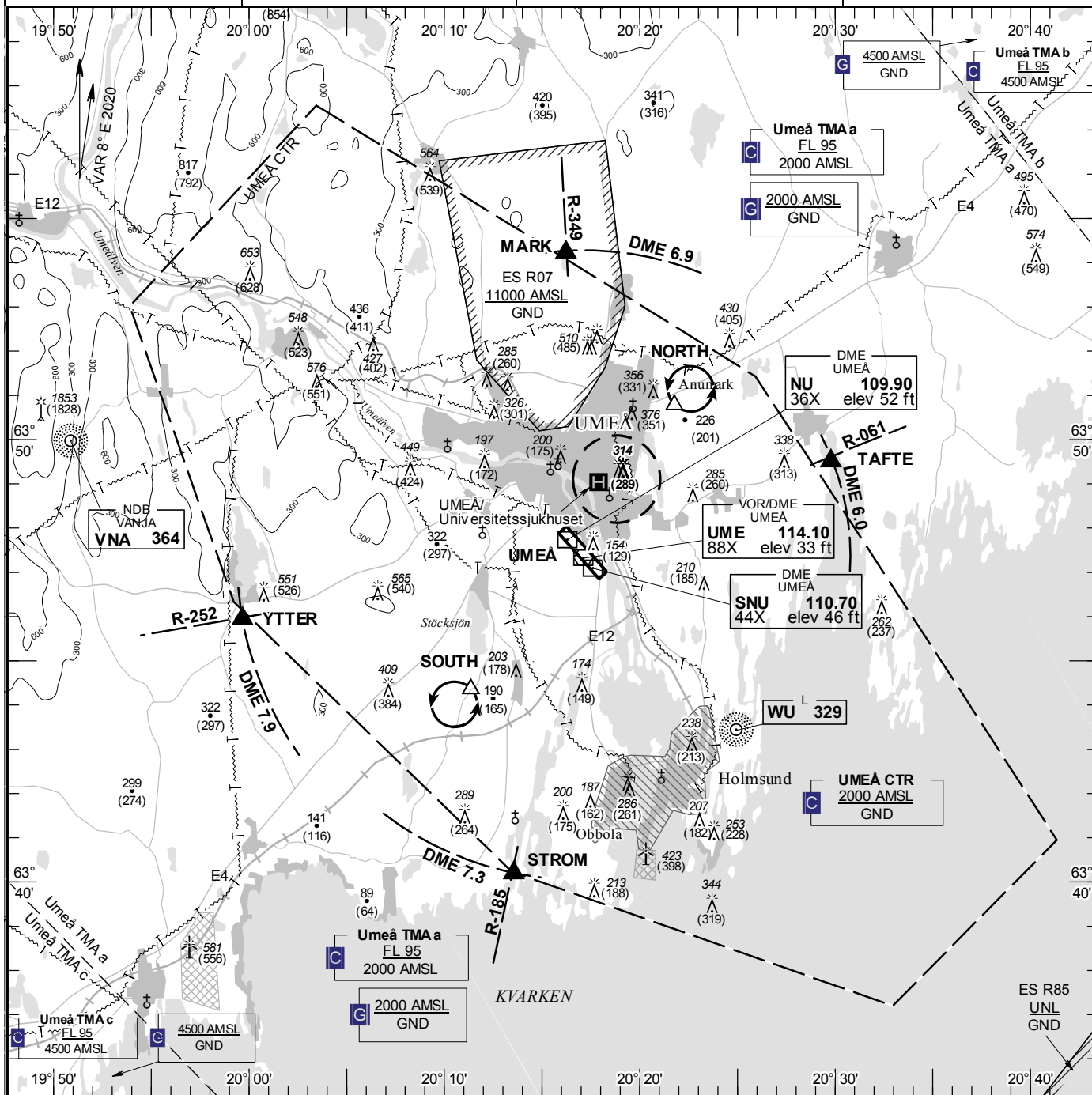
TA 5000 AMSL

UMEÅ TOWER

119.805
118.080

AD 2 ESNU 6-1

UMEÅ SWEDEN



Communication failure

- SQUAWK 7600
- Enter CTR via STROM – Holding SOUTH or via TAFTE – Holding NORTH at or below 1500 ft AMSL to traffic circuit. Transmit blind your intentions.
- Flash LDG-lights and watch TWR for optical signals.

Remark

Noise sensitive area should be avoided below 2500 ft AMSL

RWY NR	THR ELEV	PAPI (MEHT)
14	25.2 ft	Left/3.00° (61 ft)
32	17.3 ft	Left/3.00° (55 ft)

Entry / exit point

MARK	635413N 0201613E
TAFTE	634930N 0202947E
STROM	634011N 0201333E
YTTER	634556N 0195940E

Holding

NORTH:	Hold north of Anumark village, north east of point 635045N 0202147E
SOUTH:	Hold over motocross track south of lake Stöcksjön, south west of point 634420N 0201121E

Legend

See GEN 2.3