

VISUAL APPROACH CHART - ICAO

1:250000



AD ELEV 17 FEET

ELEV and ALT in ft
HGT in ft above AD ELEV

TA 5000 AMSL

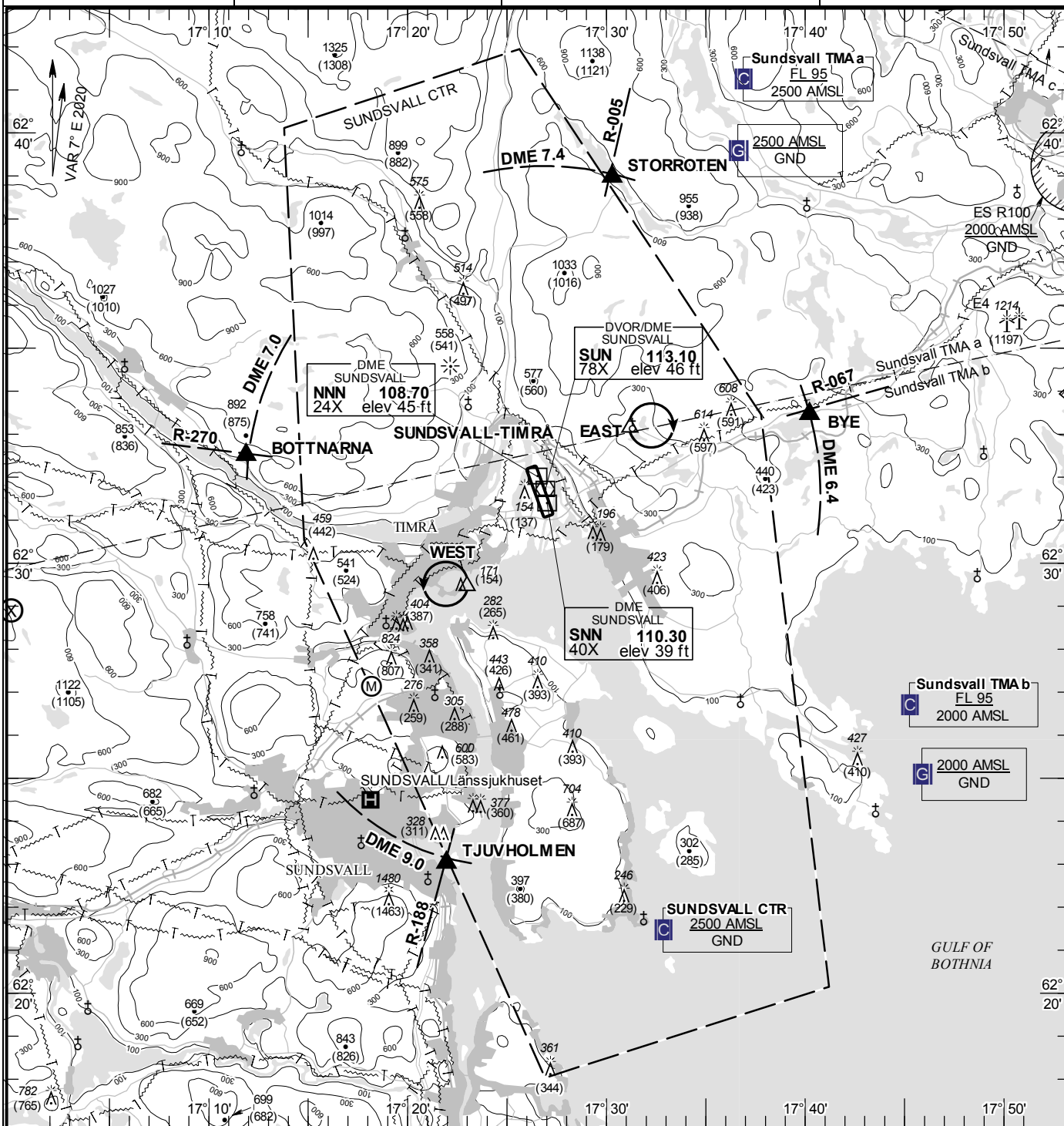
SUNDSVALL TOWER 129.555

118.105

SUNDSVALL ATIS 127.405

AD 2 ESNN 6-1

SUNDSVALL-TIMRÅ SWEDEN



Communication failure

- 1 SQUAWK 7600
- 2 Enter CTR via TJUVHOLMEN – Holding WEST or via BYE – Holding EAST at or below 2000 ft AMSL to traffic circuit. Transmit blind your intentions.
- 3 Flash LDG-lights and watch for optical signals from signalling lamp from the camera installation placed on top of remote tower (position marked R-TWR on AD Chart).

RWY NR	THR ELEV	PAPI (MEHT)
16	17.1 ft	Left/3.25° (60 ft)
34	13.3 ft	Left/3.00° (57 ft)

Entry / exit point

STORROTEN	623858N 0173017E
BYE	623327N 0174013E
TJUVHOLMEN	622301N 0172157E
BOTTNARNA	623230N 0171152E

Holding

- EAST:** Hold at Hässjö church, east of point 623308N 0173112E
- WEST:** Hold west of Viststavarv, west of point 622927N 0172258E

Legend
See GEN 2.3

Remark
Model flying area over Öraker

LFV

CHANGE: DME NNN new.

AIRAC AMDT 1/2021 **28 JAN 2021**