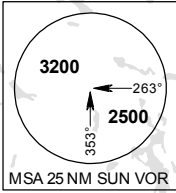
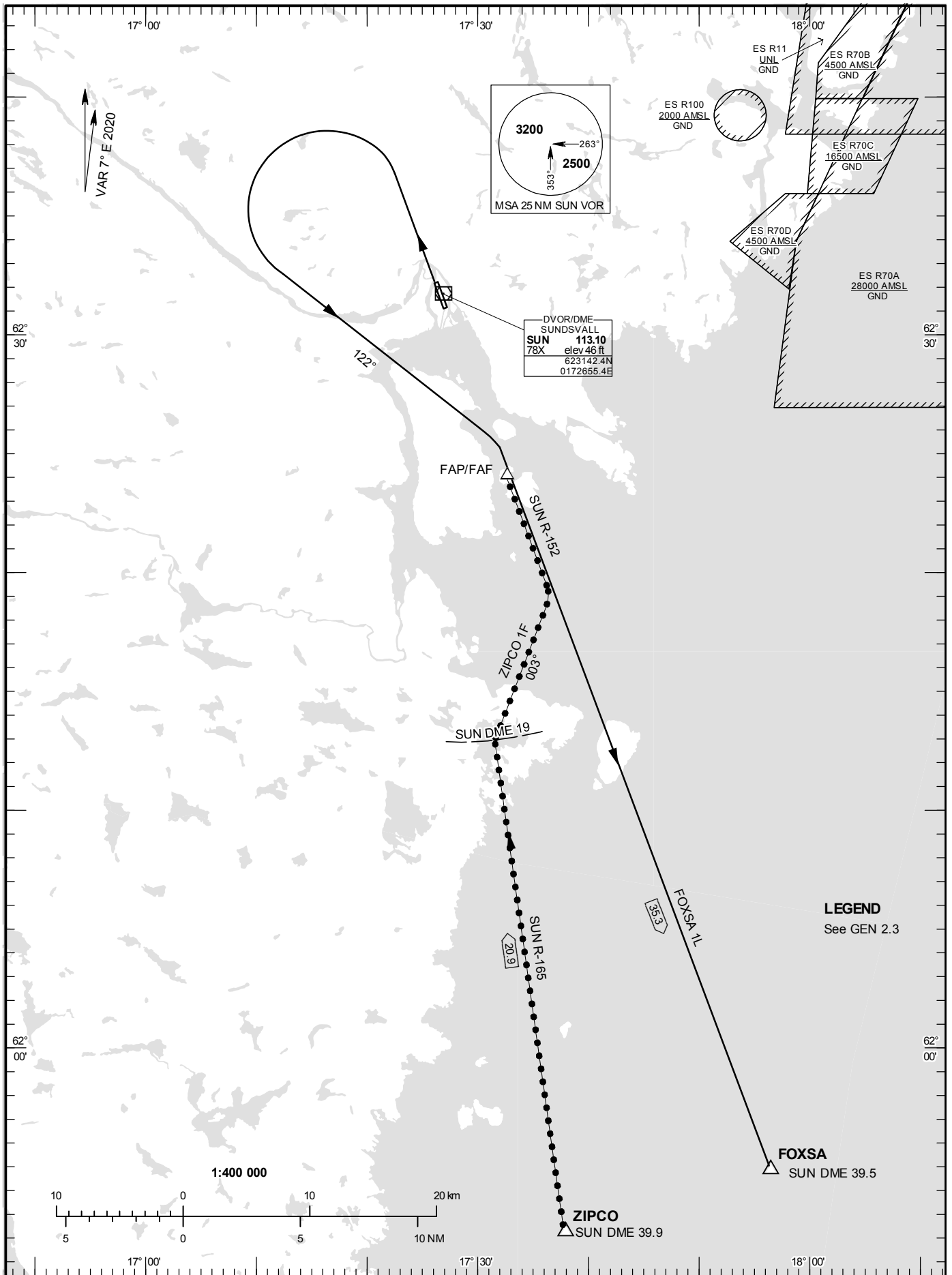


STANDARD INSTRUMENT
DEPARTURE AND ARRIVAL
CHART (SID/STAR) - ICAO

HGT and ALT in ft
BRG are MAG
TA 5000 ft AMSL

SUNDSVALL TOWER	129.555
SUNDSVALL ATIS	127.405

RWY 34



DVOR/DME
SUNDSVALL
SUN 113.10
78X elev 46 ft
623142.4N
0172655.4E

LEGEND
See GEN 2.3

ARRIVAL (STAR) RWY 34

ZIPCO ONE FOXTROT ARRIVAL (ZIPCO 1F)

At ZIPCO intercept SUN R-165, not below 5000 ft until SUN DME 19. At SUN DME 19 turn right to track 003° and intercept LOC SNN, not below 2500 ft until FAP/FAF.

DEPARTURE (SID) RWY 34

FOXSA ONE LIMA DEPARTURE (FOXSA 1L)

Climb straight ahead to 1400 ft with MNM 340 ft/NM (5.6 %). Turn left to track 122° (MAX IAS 210 kts until established on track 122°). Intercept SUN R-152 and proceed to FOXSA.