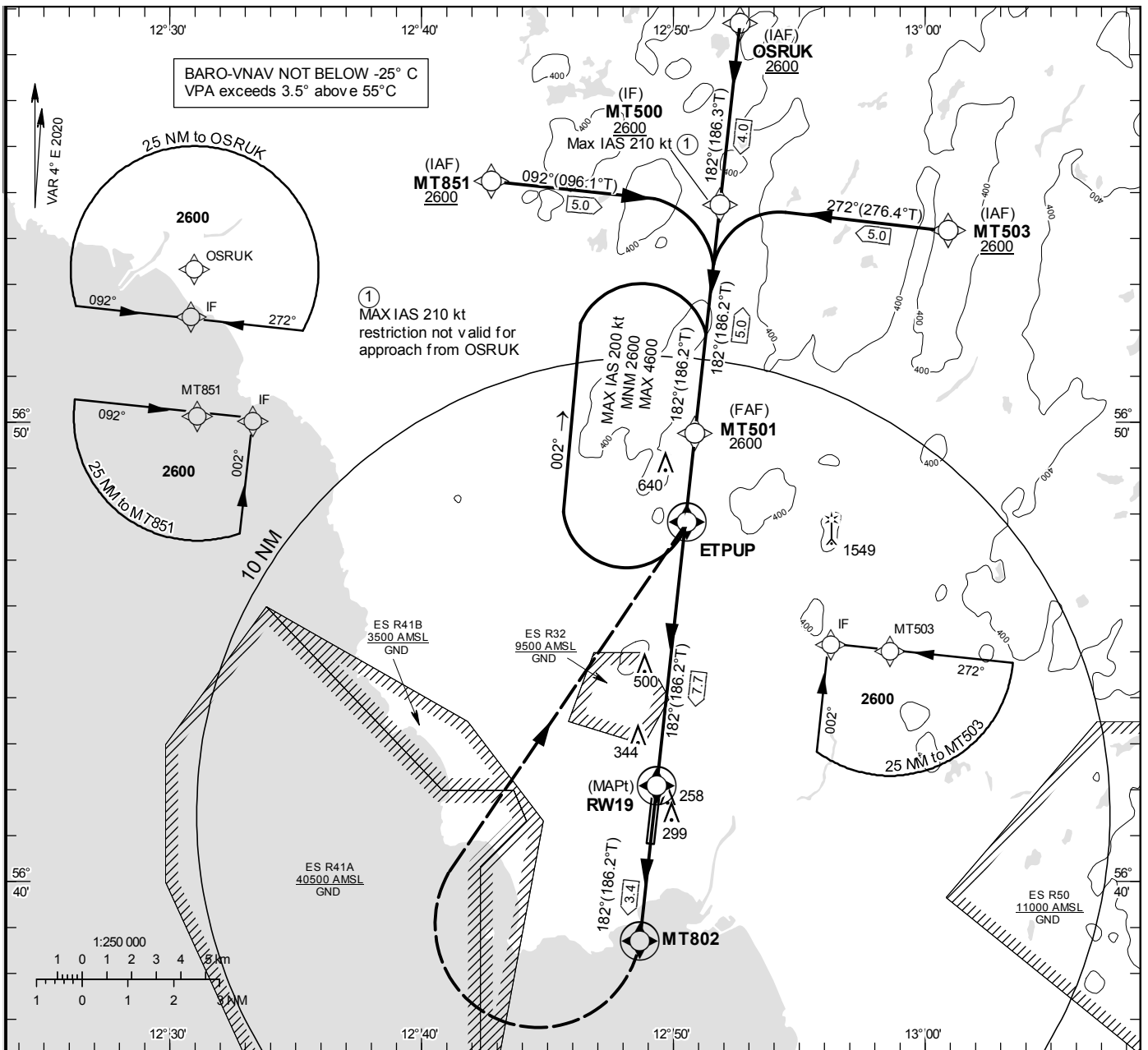


**INSTRUMENT APPROACH CHART – ICAO**  
**THR ELEV 84.2 ft, AD ELEV 101 ft**  
 OCH are related to THR.  
 BRG are MAG (True).  
 ALT, HGT and ELEV in ft.

HALMSTAD TOWER	130.105
	135.055

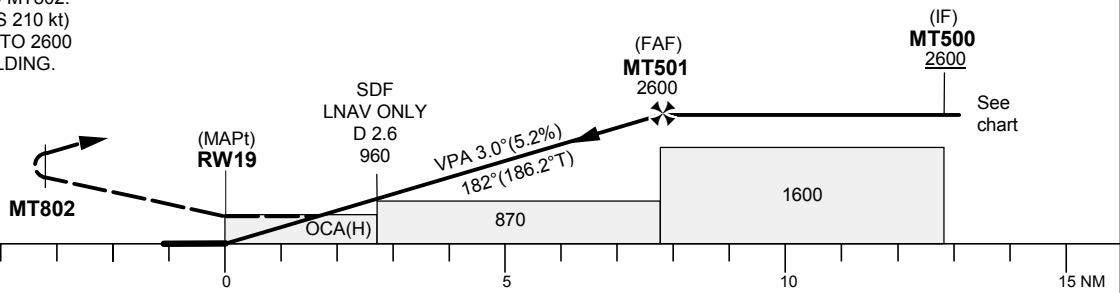
**RNP RWY 19**

EGNOS Ch 76870 E 19A



TA 5000 ft AMSL RDH 51 ft

STRAIGHT AHEAD TO MT802.  
 TURN RIGHT (MAX IAS 210 kt)  
 TO ETPUP CLIMBING TO 2600  
 AND JOIN ETPUP HOLDING.



Cat of ACFT	OCA (H)				Final approach Dist to RW19	Distance FAF-MAPt 7.7 NM						
	A	B	C	D		7	6	5	4	3		
LPV	388(304)	400(316)	408(324)	419(335)	ALT	2360	2050	1730	1410	1090		
LNAV/VNAV	430(350)	440(360)	440(360)	460(380)	GS	Kt	80	100	120	140	160	180
LNAV	650(570)				Rate of descent	ft/min	425	530	635	745	850	955

**RNP RWY 19 via MT851**

Path Desc	Waypoint Identifier	Fly-over	Course °M(°T)	Dist (NM)	Turn Dir	Altitude	Speed	VPA/RDH	Rec Navaid	Navigation Specification
IF	MT851	-	-	-	-	+2600	-	-	-	RNP APCH
TF	MT500	-	092°(096.1°)	5.0	-	+2600	-210	-	-	RNP APCH

**RNP RWY 19 via OSRUK**

Path Desc	Waypoint Identifier	Fly-over	Course °M(°T)	Dist (NM)	Turn Dir	Altitude	Speed	VPA/RDH	Rec Navaid	Navigation Specification
IF	OSRUK	-	-	-	-	+2600	-	-	-	RNP APCH
TF	MT500	-	182°(186.3°)	4.0	-	+2600	-	-	-	RNP APCH

**RNP RWY 19 via MT503**

Path Desc	Waypoint Identifier	Fly-over	Course °M(°T)	Dist (NM)	Turn Dir	Altitude	Speed	VPA/RDH	Rec Navaid	Navigation Specification
IF	MT503	-	-	-	-	+2600	-	-	-	RNP APCH
TF	MT500	-	272°(276.4°)	5.0	-	+2600	-210	-	-	RNP APCH

Path Desc	Waypoint Identifier	Fly-over	Course °M(°T)	Dist (NM)	Turn Dir	Altitude	Speed	VPA/RDH	Rec Navaid	Navigation Specification
IF	MT500	-	-	-	-	+2600	-	-	-	RNP APCH
TF	MT501	-	182° (186.2°)	5.0	-	@2600	-	-	-	RNP APCH
TF	RW19	Y	182° (186.2°)	7.7	-	@135	-	-3.0/51	-	RNP APCH
CF	MT802	Y	182° (186.2°)	3.4	-	-	-210	-	LT	RNP APCH
DF	ETPUP	Y	-	-	R	+2600	-	-	-	RNP APCH
HM	ETPUP	Y	182° (186.2°)	-	R	+2600	-200	-	-	RNAV 1

## FAS Data Block

## RNP RWY 19

## Input data

Operation Type	0
SBAS Provider	1
Airport Identifier	ESMT
Runway	19
Runway Direction	0
Approach Performance Designator	0
Route Indicator	
Reference Path Data Selector	0
Reference Path Identifier	E19A
LTP/FTP Latitude	564204.2900N
LTP/FTP Longitude	0124919.9100E
LTP/FTP Ellipsoidal Height (metres)	62.6
FPAP Latitude	564047.8050N
Delta FPAP Latitude (seconds)	-76.4850
FPAP Longitude	0124904.7985E
Delta FPAP Longitude (seconds)	-15.1115
Threshold Crossing Height	51.00
TCH Units Selector	0
Glidepath Angle (degrees)	3.00
Course Width (metres)	105.00
Length Offset (metres)	0
HAL (metres)	40.0
VAL (metres)	50.0

## Output data

Data Block	10 14 0D 13 05 13 00 00 01 39 31 05 04 61 55 18 4C B0 80 05 72 16 76 AA FD F1 89 FF FE 01 2C 01 64 00 C8 FA 77 FF A5 B1
Calculated CRC Value	77FFA5B1

## Required Additional Data

ICAO Code	ES
LTP/FTP Orthometric Height (metres)	25.7
FPAP Orthometric Height (metres)	18.0