

**INSTRUMENT
APPROACH
CHART – ICAO**

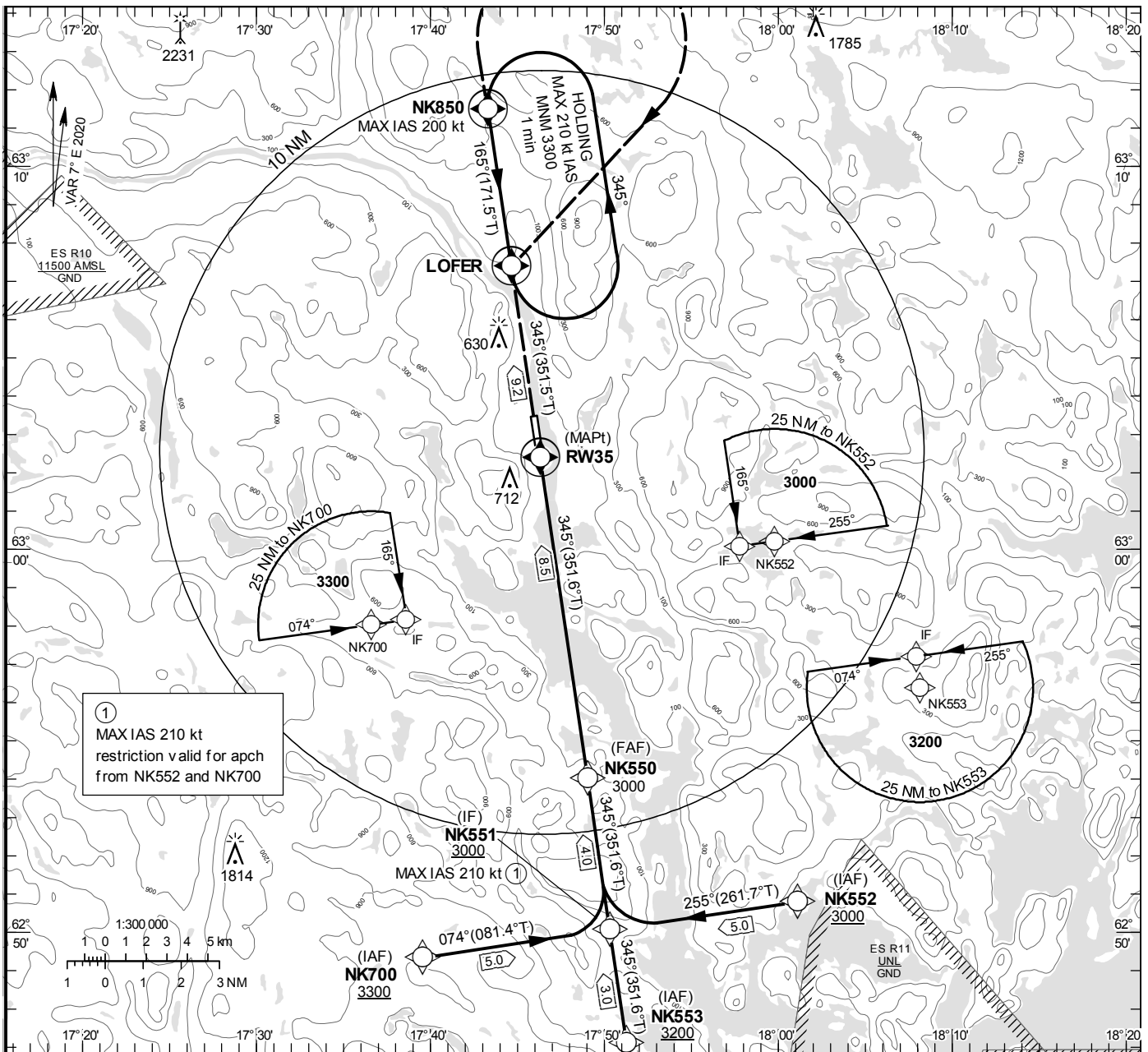
THR ELEV 23.5 ft, AD ELEV 36 ft
 OCH are related to THR.
 BRG are MAG (True).
 ALT, HGT and ELEV in ft.

KRAMFORS
INFORMATION

122.155

RNP RWY 35

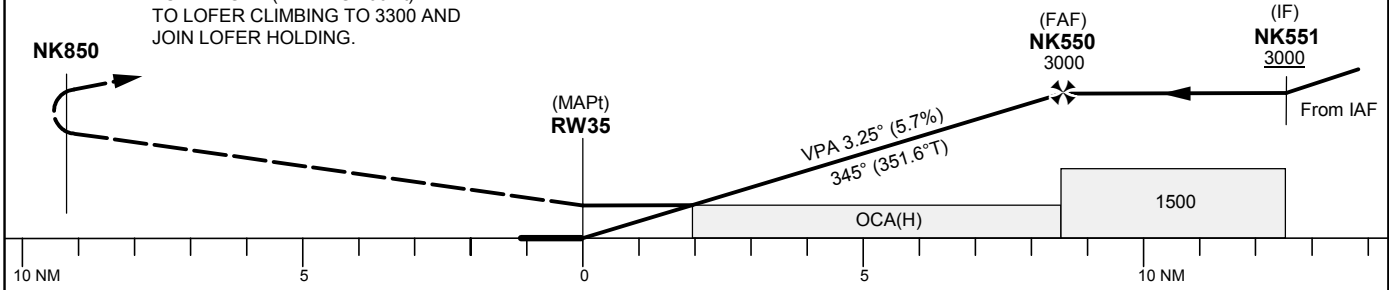
EGNOS Ch 86162 E 35A



① MAX IAS 210 kt restriction valid for apch from NK552 and NK700

TA 5000 ft AMSL RDH 50 ft

CLIMB STRAIGHT AHEAD TO NK850,
 TURN RIGHT (MAX IAS 200 kt)
 TO LOFER CLIMBING TO 3300 AND
 JOIN LOFER HOLDING.



Cat of ACFT	OCA (H)				Final approach Dist to RW35	Distance FAF-MAPT 8.5 NM						
	A	B	C	D		8	7	6	5	4	3	
LPV	324(301)	336(313)	345(322)	357(334)	ALT	2830	2490	2140	1800	1450	1110	
LNAV	790(770)				GS	kt	80	100	120	140	160	180
					Rate of descent	ft/min	460	575	690	805	920	1035

RNP RWY 35 via NK552

Path Desc	Waypoint Identifier	Fly-over	Course °M(°T)	Dist (NM)	Turn Dir	Altitude	Speed	VPA/RDH	Rec Navaid	Navigation Specification
IF	NK552	-	-	-	-	+3000	-	-	-	RNP APCH
TF	NK551	-	255°(261.7°)	5.0	-	+3000	-210	-	-	RNP APCH

RNP RWY 35 via NK553

Path Desc	Waypoint Identifier	Fly-over	Course °M(°T)	Dist (NM)	Turn Dir	Altitude	Speed	VPA/RDH	Rec Navaid	Navigation Specification
IF	NK553	-	-	-	-	+3200	-	-	-	RNP APCH
TF	NK551	-	345°(351.6°)	3.0	-	+3000	-	-	-	RNP APCH

RNP RWY 35 via NK700

Path Desc	Waypoint Identifier	Fly-over	Course °M(°T)	Dist (NM)	Turn Dir	Altitude	Speed	VPA/RDH	Rec Navaid	Navigation Specification
IF	NK700	-	-	-	-	+3300	-	-	-	RNP APCH
TF	NK551	-	074°(081.4°)	5.0	-	+3000	-210	-	-	RNP APCH

Path Desc	Waypoint Identifier	Fly-over	Course °M(°T)	Dist (NM)	Turn Dir	Altitude	Speed	VPA/RDH	Rec Navaid	Navigation Specification
IF	NK551	-	-	-	-	+3000	-	-	-	RNP APCH
TF	NK550	-	345°(351.6°)	4.0	-	@3000	-	-	-	RNP APCH
TF	RW35	Y	345°(351.6°)	8.5	-	@73	-	-3.25/50	-	RNP APCH
TF	NK850	Y	345°(351.5°)	9.2	R	-	-200	-	-	RNP APCH
DF	LOFER	Y	-	-	-	+3300	-	-	-	RNP APCH

ESNK Holding LOFER

Path Desc	Waypoint Identifier	Fly-over	Course °M(°T)	Dist (NM)	Turn Dir	Altitude	Speed	VPA/RDH	Rec Navaid	Navigation Specification
HM	LOFER	Y	165°(171.5°)	-	L	+3300	-210	-	-	RNP 1

FAS Data Block

RNP RWY 35

Input data

Operation Type	0
SBAS Provider	1 (EGNOS)
Airport Identifier	ESNK
Runway	35
Runway Letter	0 (None)
Approach Performance Designator	0
Route Indicator	
Reference Path Data Selector	0
Reference Path Identifier	E35A
LTP/FTP Latitude	630222.9900N
LTP/FTP Longitude	0174618.3600E
LTP/FTP Ellipsoidal Height (metres)	33.1
FPAP Latitude	630328.3580N
Delta FPAP Latitude (seconds)	65.3680
FPAP Longitude	0174556.9150E
Delta FPAP Longitude (seconds)	-21.4450
Threshold Crossing Height	50.0
TCH Units Selector	0 (feet)
Glidepath Angle (degrees)	3.25
Course Width (metres)	105.00
Length Offset (metres)	48
HAL (metres)	40.0
VAL (metres)	50.0

Output data

Data Block	10 0B 0E 13 05 23 00 00 01 35 33 05 1C C0 0D 1B F0 76 A0 07 4B 15 B0 FE 01 76 58 FF F4 01 45 01 64 06 C8 FA C6 56 54 C7
Calculated CRC Value	C65654C7

Required Additional Data

ICAO Code	ES
LTP/FTP Orthometric Height (metres)	7.2