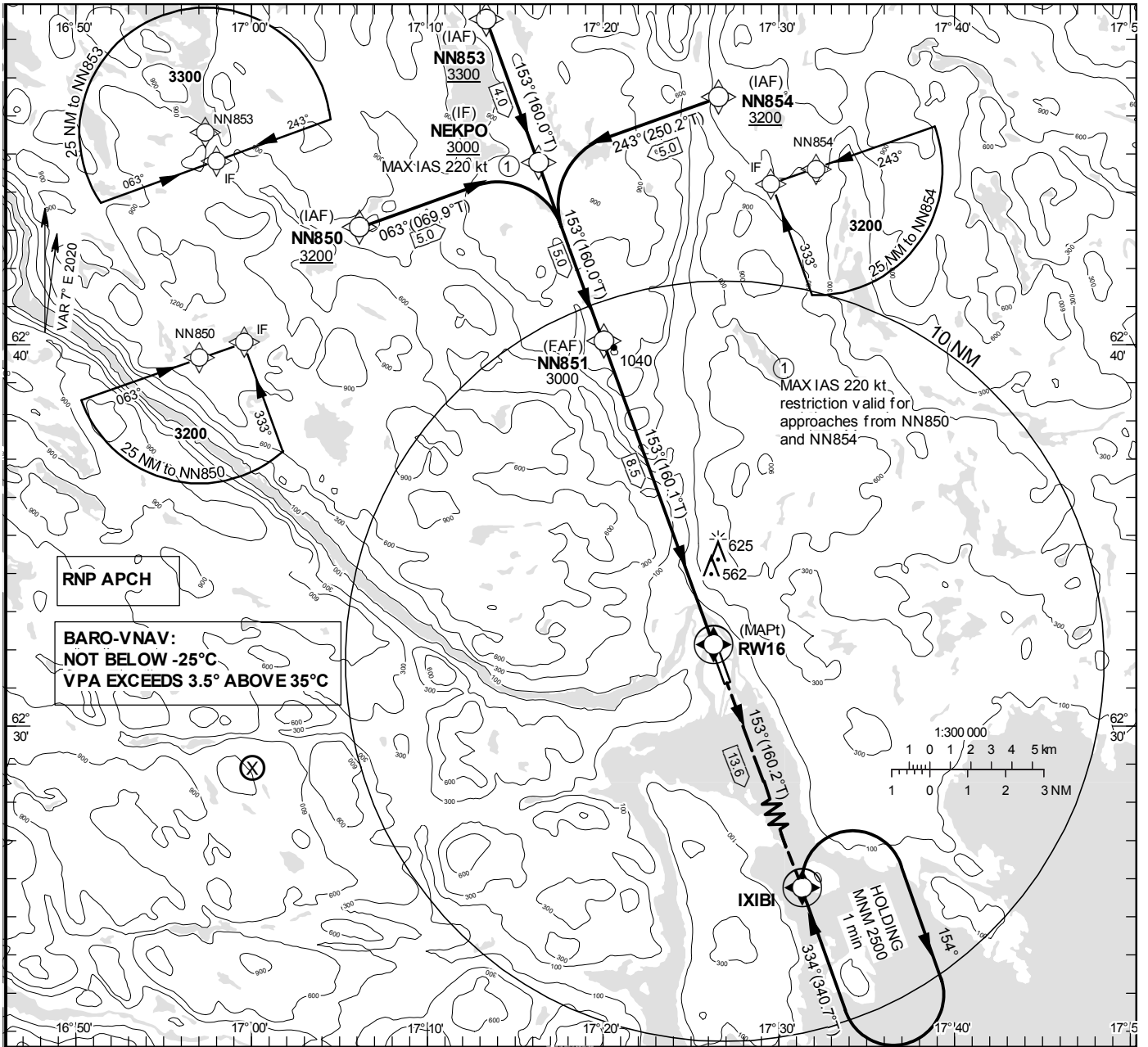


**INSTRUMENT APPROACH CHART – ICAO**  
**THR ELEV 17.1 ft, AD ELEV 17 ft**  
 OCH are related to THR.  
 BRG are MAG (True).  
 ALT, HGT and ELEV in ft.

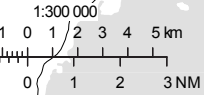
SUNDSVALL TOWER	129.555
SUNDSVALL ATIS	127.405

**RNP RWY 16**

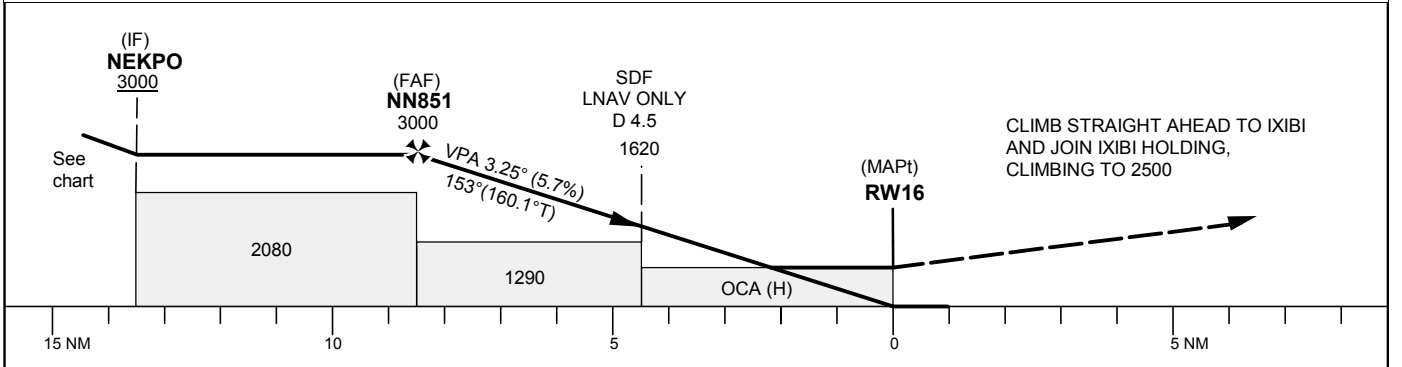


RNP APCH

BARO-VNAV:  
NOT BELOW -25°C  
VPA EXCEEDS 3.5° ABOVE 35°C



TA 5000 ft AMSL RDH 50.0 ft



OCA (H)					Final approach	Distance FAF-MAPT 8.5 NM						
Cat of ACFT	A	B	C	D	Dist to RW16	8	7	6	5	4	3	
LNAV/VNAV	700(680)	700(680)	710(690)	710(690)	ALT	2830	2480	2140	1790	1450	1100	
LNAV	760(740)				GS	kt	80	100	120	140	160	180
					Rate of descent	ft/min	460	575	690	805	920	1035

## RNP RWY 16 via NN850

Path Desc	Waypoint Identifier	Fly-over	Course °M(°T)	Dist (NM)	Turn Dir	Altitude	Speed	VPA/RDH	Rec Navaid	Navigation Specification
IF	NN850	-	-	-	-	+3200	-	-	-	RNP APCH
TF	NEKPO	-	063°(069.9°)	5.0	-	+3000	-220	-	-	RNP APCH

## RNP RWY 16 via NN853

Path Desc	Waypoint Identifier	Fly-over	Course °M(°T)	Dist (NM)	Turn Dir	Altitude	Speed	VPA/RDH	Rec Navaid	Navigation Specification
IF	NN853	-	-	-	-	+3300	-	-	-	RNP APCH
TF	NEKPO	-	153°(160.0°)	4.0	-	+3000	-	-	-	RNP APCH

## RNP RWY 16 via NN854

Path Desc	Waypoint Identifier	Fly-over	Course °M(°T)	Dist (NM)	Turn Dir	Altitude	Speed	VPA/RDH	Rec Navaid	Navigation Specification
IF	NN854	-	-	-	-	+3200	-	-	-	RNP APCH
TF	NEKPO	-	243°(250.2°)	5.0	-	+3000	-220	-	-	RNP APCH

Path Desc	Waypoint Identifier	Fly-over	Course °M(°T)	Dist (NM)	Turn Dir	Altitude	Speed	VPA/RDH	Rec Navaid	Navigation Specification
IF	NEKPO	-	-	-	-	+3000	-	-	-	RNP APCH
TF	NN851	-	153°(160.0°)	5.0	-	@3000	-	-	-	RNP APCH
TF	RW16	Y	153°(160.1°)	8.5	-	@67	-	-3.25/50	-	RNP APCH
TF	IXIBI	Y	153°(160.2°)	13.6	-	-	-	-	-	RNP APCH
HM	IXIBI	Y	334°(340.7°)	-	R	+2500	-	-	-	RNAV 1