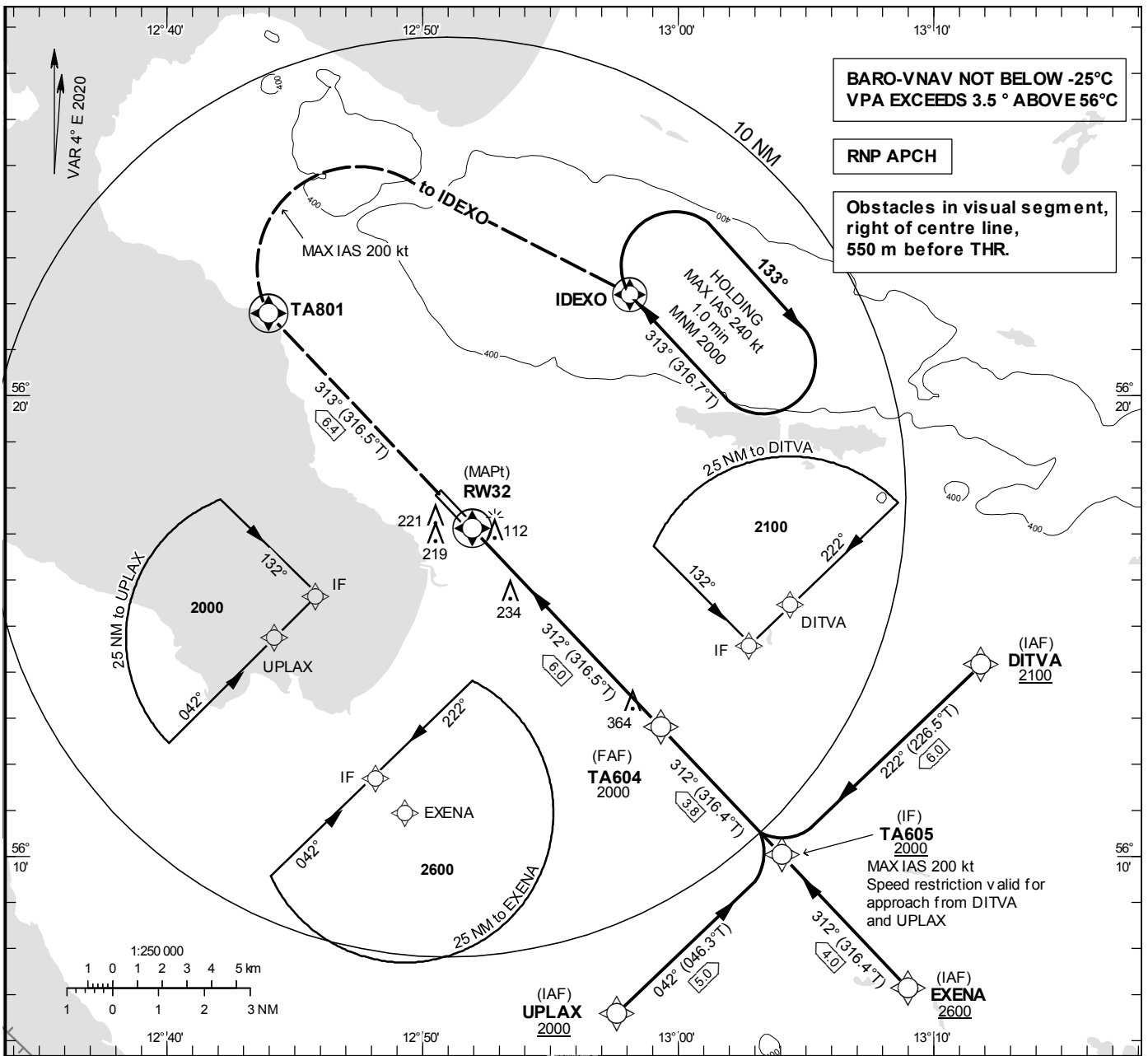


INSTRUMENT APPROACH CHART – ICAO

THR ELEV 50 ft, AD ELEV 62 ft
 OCH are related to THR.
 BRG are MAG (True).
 ALT, HGT and ELEV in ft.

ÄNGELHOLM TOWER	127.105
ÄNGELHOLM CONTROL	132.455

RNP RWY 32



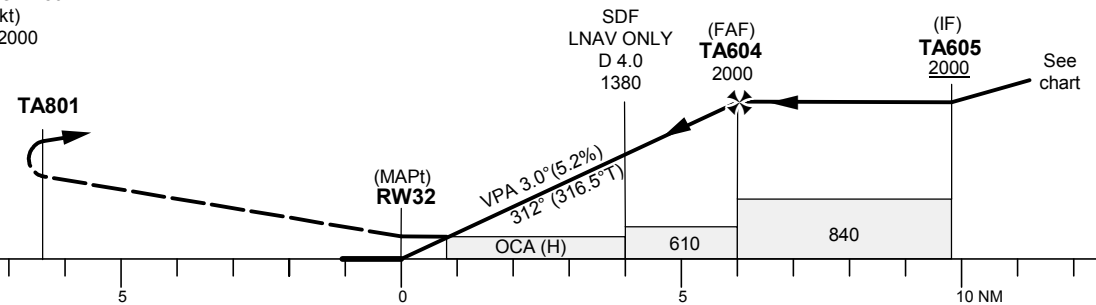
**BARO-VNAV NOT BELOW -25°C
VPA EXCEEDS 3.5 ° ABOVE 56°C**

RNP APCH

**Obstacles in visual segment,
right of centre line,
550 m before THR.**

TA 5000 ft AMSL RDH 50 ft

CLIMB STRAIGHT AHEAD TO TA801.
 TURN RIGHT (MAX IAS 200 kt)
 AND CONTINUE CLIMB TO 2000
 TO HOLD AT IDEXO.



OCA (H)					Final approach				Distance FAF-MAPt 6.0 NM								
Cat of ACFT	A	B	C	D	Dist to RW32	5	4	3	2	5	4	3	2				
LNAV/VNAV	350(300)	360(310)	370(320)	390(340)	ALT	1690	1370	1060	740	GS	kt	80	100	120	140	160	180
LNAV	480(430)				Rate of descent	ft/min	425	530	635	745	850	955					

Instrument Approach Procedure Coding Tables

RNP RWY 32 via DITVA

Path Desc	Waypoint Identifier	Fly-over	Course °M(°T)	Dist (NM)	Turn Dir	Altitude	Speed	VPA/RDH	Rec Navaid	Navigation Specification
IF	DITVA	-	-	-	-	+2100	-	-	-	RNP APCH
TF	TA605	-	222°(226.5°)	6.0	-	+2000	-200	-	-	RNP APCH

RNP RWY 32 via EXENA

Path Desc	Waypoint Identifier	Fly-over	Course °M(°T)	Dist (NM)	Turn Dir	Altitude	Speed	VPA/RDH	Rec Navaid	Navigation Specification
IF	EXENA	-	-	-	-	+2600	-	-	-	RNP APCH
TF	TA605	-	312°(316.4°)	4.0	-	+2000	-	-	-	RNP APCH

RNP RWY 32 via UPLAX

Path Desc	Waypoint Identifier	Fly-over	Course °M(°T)	Dist (NM)	Turn Dir	Altitude	Speed	VPA/RDH	Rec Navaid	Navigation Specification
IF	UPLAX	-	-	-	-	+2000	-	-	-	RNP APCH
TF	TA605	-	042°(046.3°)	5.0	-	+2000	-200	-	-	RNP APCH

Path Desc	Waypoint Identifier	Fly-over	Course °M(°T)	Dist (NM)	Turn Dir	Altitude	Speed	VPA/RDH	Rec Navaid	Navigation Specification
IF	TA605	-	-	-	-	+2000	-	-	-	RNP APCH
TF	TA604	-	312°(316.4°)	3.8	-	@2000	-	-	-	RNP APCH
TF	RW32	Y	312°(316.5°)	6.0	-	@100	-	-3.0/50	-	RNP APCH
TF	TA801	Y	313°(316.5°)	6.4	-	-	-200	-	-	RNP APCH
DF	IDEXO	Y	-	-	-	-	-	-	-	RNP APCH

ESTA Holding IDEXO

Path Desc	Waypoint Identifier	Fly-over	Course °M(°T)	Dist (NM)	Turn Dir	Altitude	Speed	VPA/RDH	Rec Navaid	Navigation Specification
HM	IDEXO	Y	313°(316.7°)	-	R	+2000	-240	-	-	RNAV 1