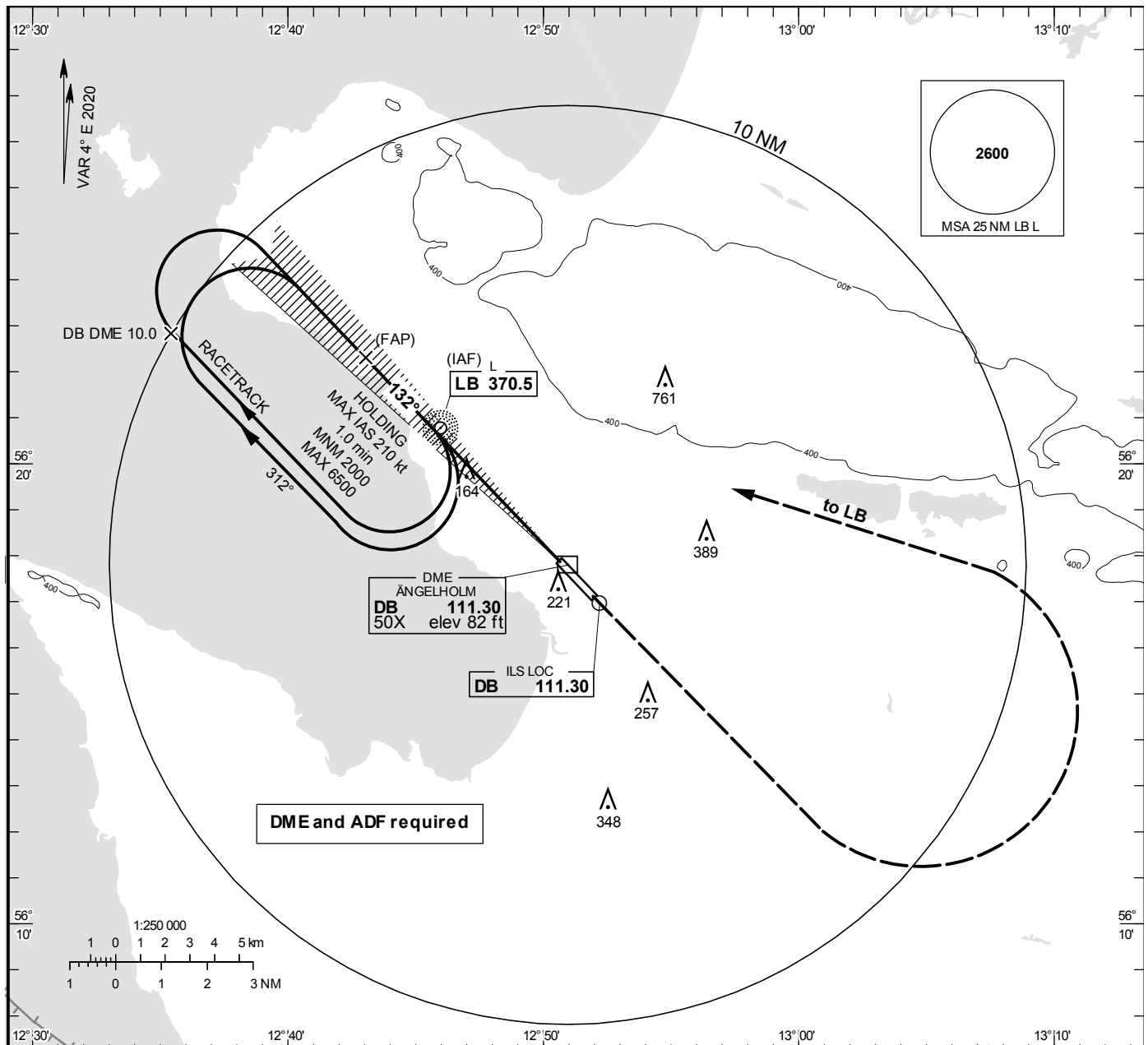


ILS y Cat I or LOC y
RWY 14

ÄNGELHOLM TOWER 127.105
 ÄNGELHOLM CONTROL 132.455

THR ELEV 60.2 ft, AD ELEV 62 ft
 OCH are related to THR.
 Circling OCH are related to AD ELEV.
 BRG are MAG
 ALT. HGT and ELEV in ft.

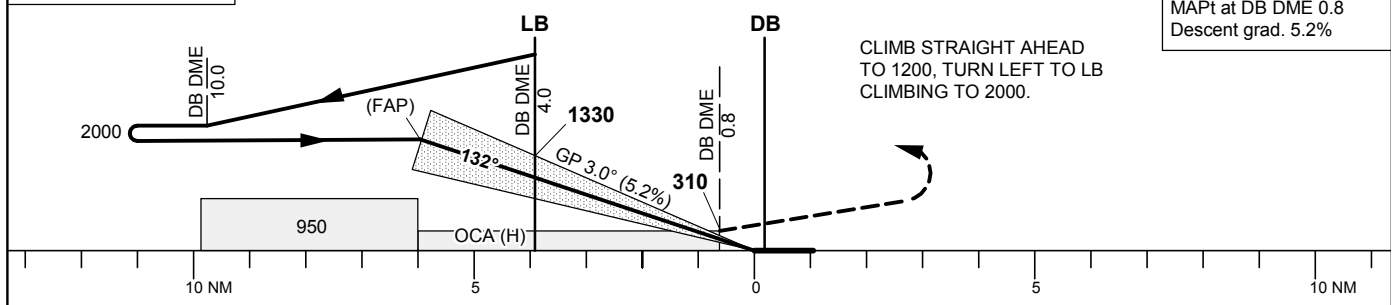
**INSTRUMENT
 APPROACH
 CHART – ICAO**



TA 5000 ft AMSL RDH 50.9 ft Max speed within racetrack 210 kt IAS *Timing not authorized for defining the MAPt

OM replaced by DME 4.0
 MM replaced by DME 0.8

LOC
 FAF at DB DME 6.1 2000
 MAPt at DB DME 0.8
 Descent grad. 5.2%



OCA (H)					Final approach	FAF-MAPt 5.3 NM*						
Cat of ACFT	A	B	C	D	DME DB NM	6	5	4	3	2		
Straight-in Approach	Cat I	200(140)	209(149)	219(159)	231(171)	ALT	1970	1650	1330	1010	690	
	LOC	410(350)				GS	kt	80	100	120	140	160
Circling	520(460)	690(630)	1160(1100)	1160(1100)	Time	min:s	3:59	3:11	2:39	2:16	1:59	1:46
Circling SW RWY	520(460)	560(500)	660(600)	750(690)	Rate of descent	ft/min	425	530	635	745	850	955