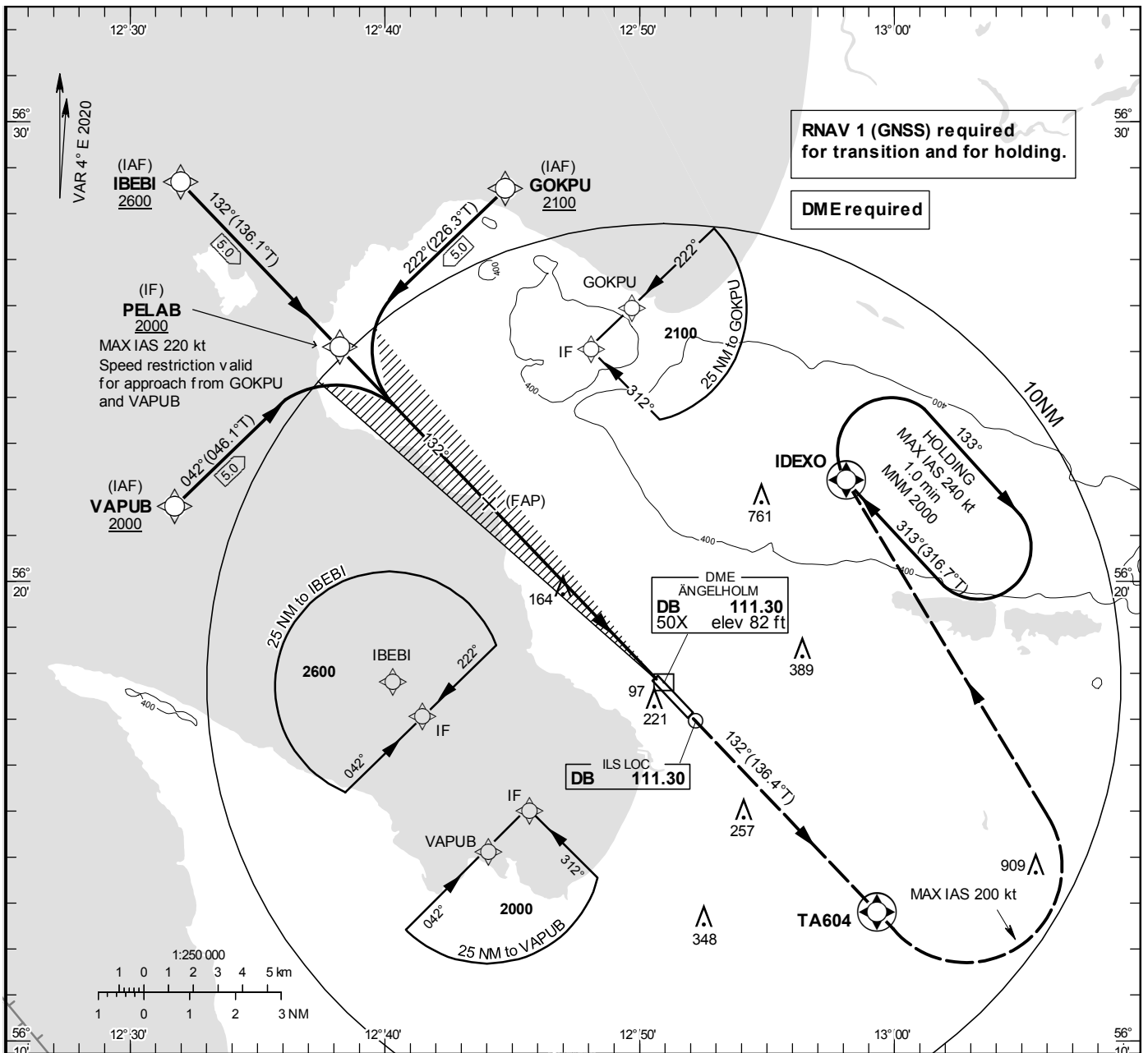


INSTRUMENT APPROACH CHART – ICAO

THR ELEV 60.2 ft, AD ELEV 62 ft
 OCH are related to THR.
 Circling OCH are related to AD ELEV.
 BRG are MAG
 ALT, HGT and ELEV in ft.

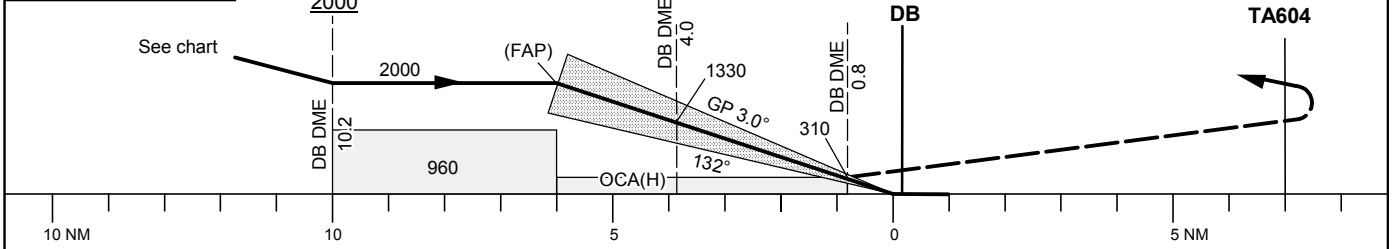
ÄNGELHOLM TOWER 127.105
 ÄNGELHOLM CONTROL 132.455

ILS z Cat I or LOC z RWY 14



TA 5000 ft AMSL RDH 50.9 ft *Timing not authorized for defining the MAPt

LOC FAF at DB DME 6.1 2000 MAPt at DB DME 0.8 Descent grad 5.2%
 OM replaced by DME 4.0 MM replaced by DME 0.8
 CLIMB STRAIGHT AHEAD TO TA604. TURN LEFT (MAX IAS 200 kt) AND CONTINUE CLIMB TO 2000 TO HOLD AT IDEXO.



OCA (H)					Final approach	FAF-MAPt 5.3 NM*						
Cat of ACFT	A	B	C	D	DME DB NM	6	5	4	3	2		
Straight-in Approach	Cat I	200(140)	209(149)	219(159)	231(171)	ALT	1970	1650	1330	1010	690	
	LOC	410(350)				GS	kt	80	100	120	140	160
Circling	520(460)	690(630)	1160(1100)	1160(1100)	Time	min:s	3:59	3:11	2:39	2:16	1:59	1:46
Circling SW RWY	520(460)	560(500)	660(600)	750(690)	Rate of descent	ft/min	425	530	635	745	850	955