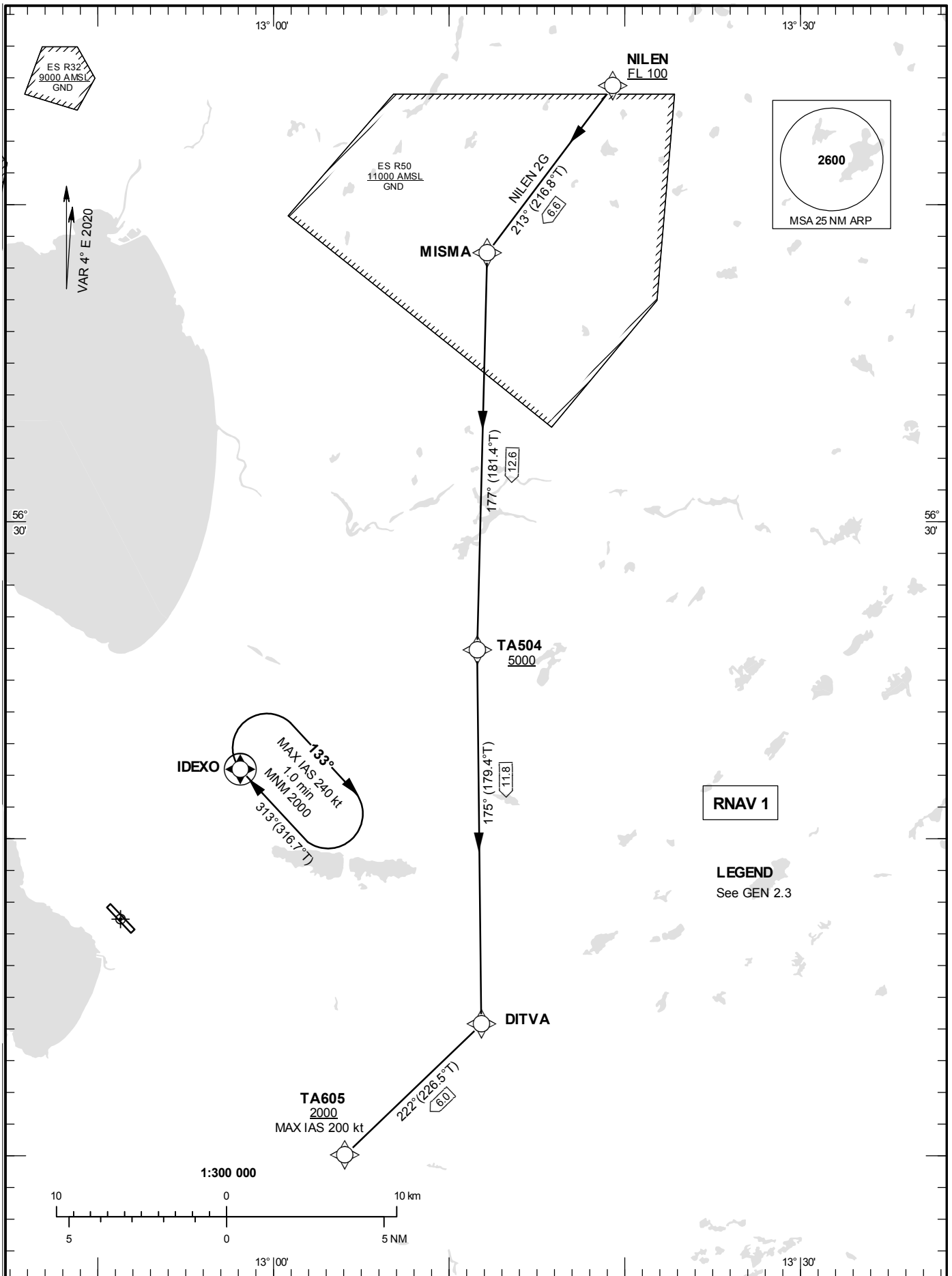


STANDARD INSTRUMENT  
ARRIVAL CHART (STAR) -  
ICAO

HGT and ALT in ft  
BRG are MAG (True)  
TA 5000 ft AMSL

ÄNGELHOLM TOWER	127.105
ÄNGELHOLM CONTROL	132.455

RNAV (GNSS) STAR RWY 32



**Prescribed Coding of RNAV (GNSS) STAR RWY 32****NILEN 2G**

Path Term	Waypoint Identifier	Fly-over	Course °M(°T)	Dist (NM)	Turn Dir	Altitude (ft)	Speed Limits (kt)	VPA/RDH (°/ft)	Rec Navaid	Navigation Specification
IF	NILEN	-	-	-	-	+FL100	-	-	-	RNAV 1
TF	MISMA	-	213° (216.8°)	6.6	-	-	-	-	-	RNAV 1
TF	TA504	-	177° (181.4°)	12.6	-	+5000	-	-	-	RNAV 1
TF	DITVA	-	175° (179.4°)	11.8	-	-	-	-	-	RNAV 1
TF	TA605	-	222° (226.5°)	6.0	-	+2000	-200	-	-	RNAV 1

STAR instruction: NILEN (FL100 or above) – MISMA – TA504 (5000 ft or above) – DITVA – TA605 (Max IAS 200 kt, 2000 ft or above)