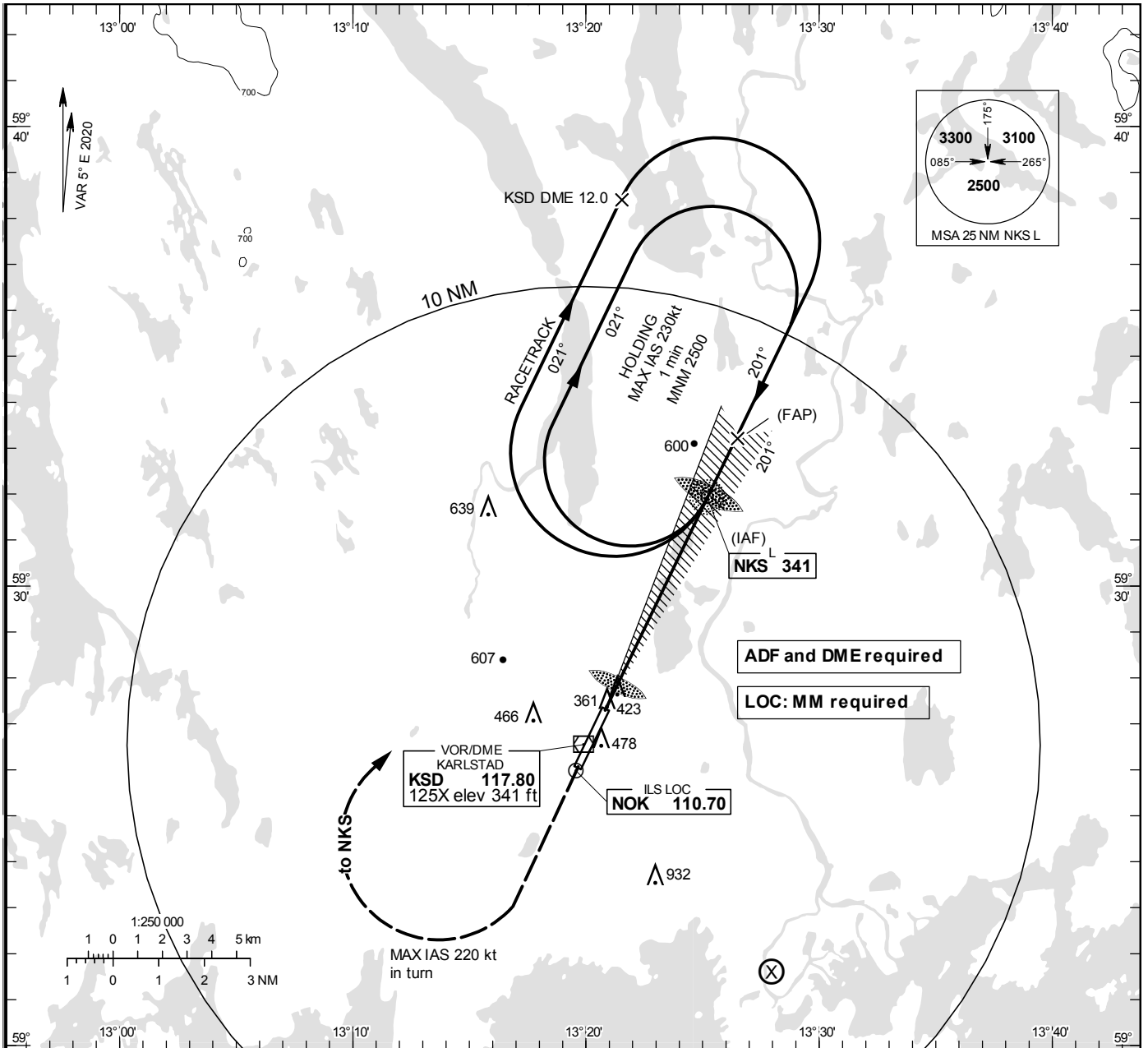


**INSTRUMENT
APPROACH
CHART – ICAO**

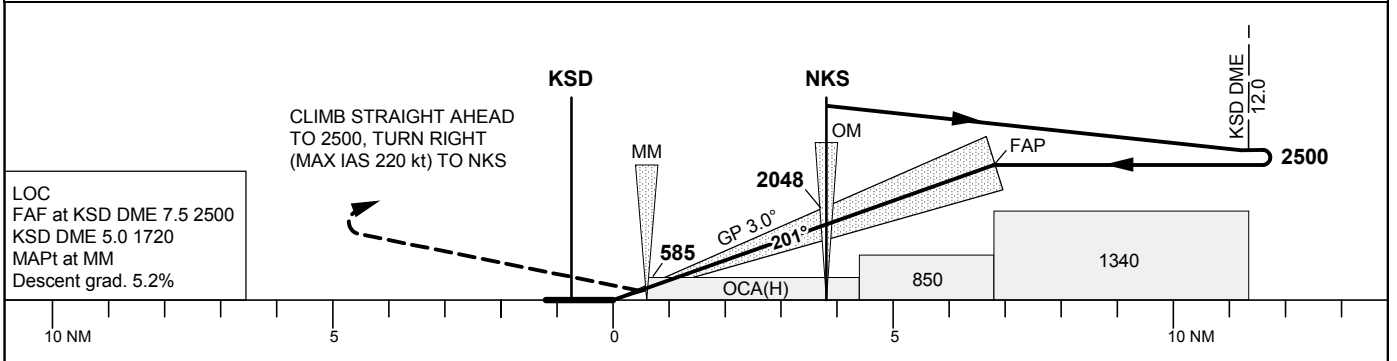
THR ELEV 352.9 ft, AD ELEV 353 ft
 OCH are related to THR.
 Circling OCH are related to AD ELEV.
 BRG are MAG
 ALT. HGT and ELEV in ft.

KARLSTAD TOWER 119.455

ILS or LOC RWY 21



TA 5000 ft AMSL RDH 51.5 ft Circling MAX IAS 200 kt *Timing not authorized for defining the MAPt



OCA(H)					Final approach	LOC Distance FAF-MAPt 6.1 NM*							
Cat of ACFT	A	B	C	D	DME KSD NM	7	6	5	4	3	2		
Straight-in Approach	CAT I	500(148)	508(156)	519(167)	527(175)	2360	2040	1720	1400	1080	760		
	LOC	670(320)				GS	80	100	120	140	160	180	
Circling		780(430)	910(560)	1330(980)	1330(980)	Time	min:s	4:32	3:38	3:02	2:36	2:16	2:01
Circling NW RWY		770(420)	910(560)	1010(660)	1040(690)	Rate of descent	ft/min	425	530	635	745	850	955