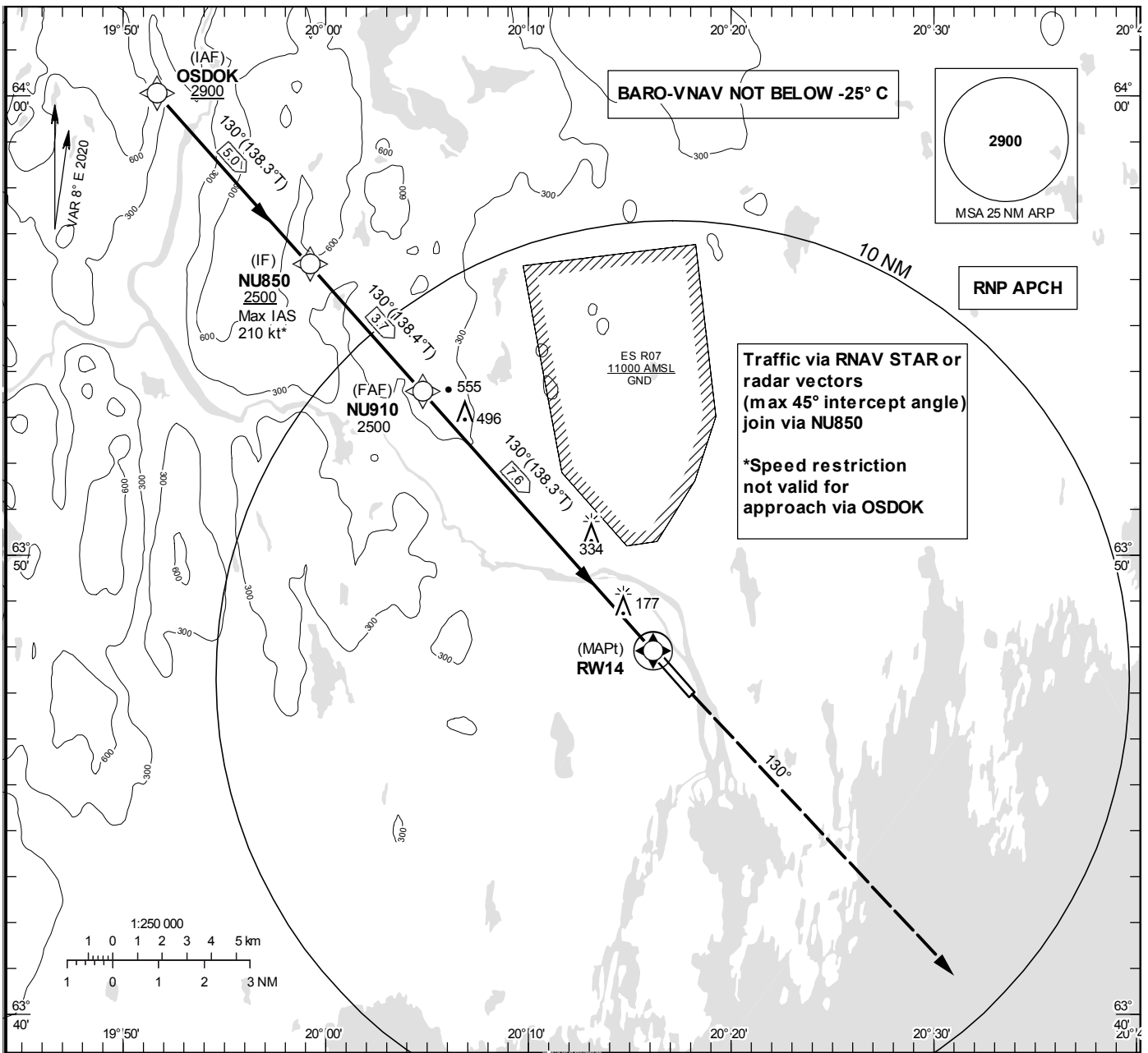


**INSTRUMENT
APPROACH
CHART – ICAO**

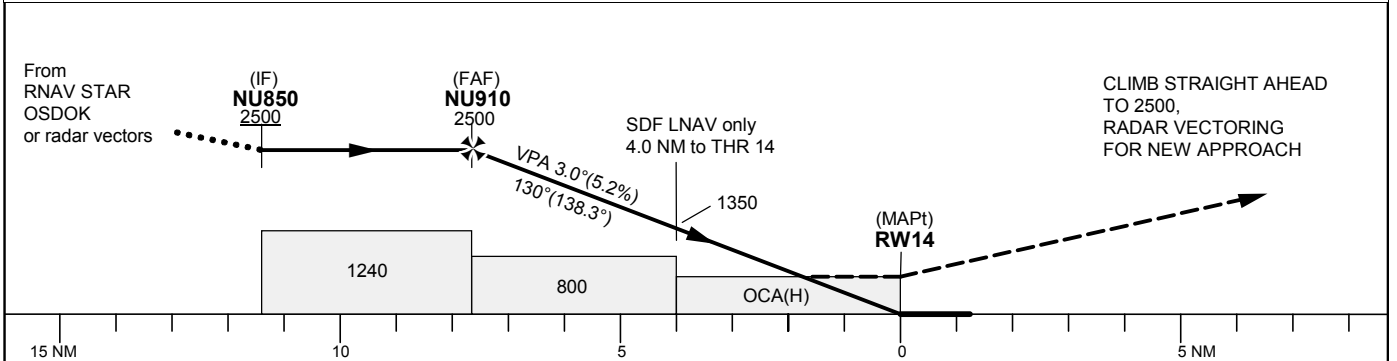
THR ELEV 25.2 ft, AD ELEV 25 ft
 OCH are related to THR.
 BRG are MAG (True).
 ALT, HGT and ELEV in ft.

UMEÅ TOWER 119.805

RNP RWY 14



TA 5000 ft AMSL RDH 50 ft



OCA (H)					Final approach		Distance FAF-MAPt 7.6 NM					
Cat of ACFT	A	B	C	D	Dist to RW 14	7	6	5	4	3	2	
LNAV/VNAV	310(290)	320(300)	330(310)	340(320)	ALT	2300	1990	1670	1350	1030	710	
LNAV	560(540)				GS	kt	80	100	120	140	160	180
					Rate of descent	ft/min	425	530	635	745	850	955

RNP RWY 14 via RNAV STAR KETEL/LENSO/TINDO 3S or radar vectors

Path Desc	Waypoint Identifier	Fly-over	Course °M(°T)	Dist (NM)	Turn Dir	Altitude	Speed	VPA/RDH	Rec Navaid	Navigation Specification
IF	NU850	-	-	-	-	+2500	-210	-	-	RNP APCH
TF	NU910	-	130°(138.4°)	3.7	-	@2500	-	-	-	RNP APCH
TF	RW14	Y	130°(138.3°)	7.6	-	@75	-	-3.0/50	-	RNP APCH
CA	-	-	130°(138.4°)	-	-	+2500	-	-	-	RNP APCH
VM	-	-	130°	-	-	-	-	-	-	RNP APCH

RNP RWY 14 via IAF OSDOK

Path Desc	Waypoint Identifier	Fly-over	Course °M(°T)	Dist (NM)	Turn Dir	Altitude	Speed	VPA/RDH	Rec Navaid	Navigation Specification
IF	OSDOK	-	-	-	-	+2900	-	-	-	RNP APCH
TF	NU850	-	130°(138.3°)	5.0	-	+2500	-	-	-	RNP APCH
TF	NU910	-	130°(138.4°)	3.7	-	@2500	-	-	-	RNP APCH
TF	RW14	Y	130°(138.3°)	7.6	-	@75	-	-3.0/50	-	RNP APCH
CA	-	-	130°(138.4°)	-	-	+2500	-	-	-	RNP APCH
VM	-	-	130°	-	-	-	-	-	-	RNP APCH