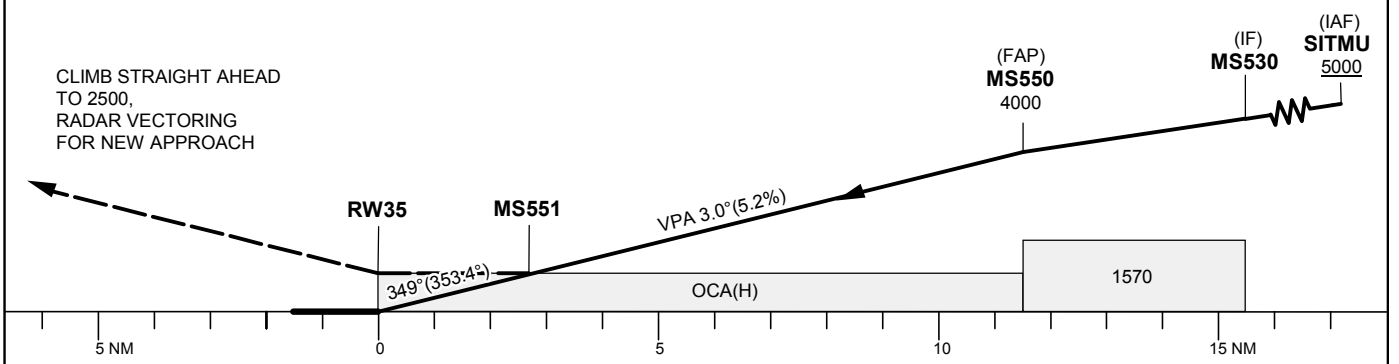
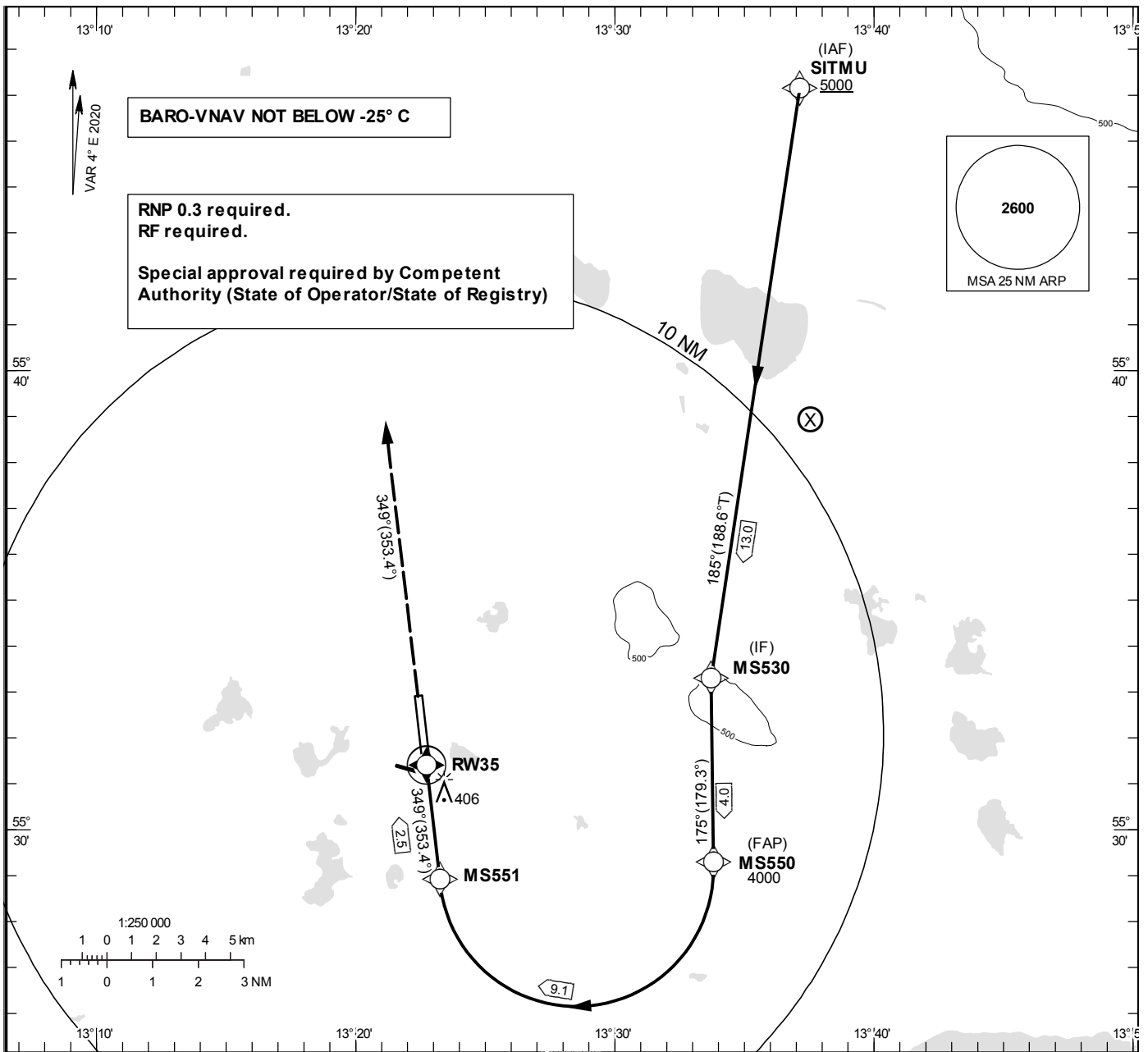


INSTRUMENT APPROACH CHART – ICAO
THR ELEV 236.3 ft, AD ELEV 237 ft
 OCH are related to THR.
 BRG are MAG (True).
 ALT, HGT and ELEV in ft.

STURUP TOWER	118.805
SWEDEN CONTROL	134.980
STURUP ATIS	129.280

RNP y RWY 35 (AR)



RNP y RWY 35 (AR) via SITMU

Path Desc	Waypoint Identifier	Fly-over	Course °M(°T)	Dist (NM)	Turn Dir	Rest Alts	Speed Limits	VPA/RDH	Arc radius	Arc center	Rec NAV	Nav Spec
IF	SITMU	-	-	-	-	+5000	-	-	-	-	-	RNP 1.0
TF	MS530	-	185°(188.6°)	13.0	-	-	-	-	-	-	-	RNP 1.0
TF	MS550	-	175°(179.3°)	4.0	-	@4000	-	-	-	-	-	RNP 0.3
RF	MS551	-	-	-	R	-	-	-3.0	3.013	ARC30	-	RNP 0.3
TF	RW35	Y	349°(353.4°)	2.5	-	@288	-	-3.0/52	-	-	-	RNP 0.3
FA	-	-	349°(353.4°)	-	-	2500	-	-	-	-	SUP	RNP 1.0