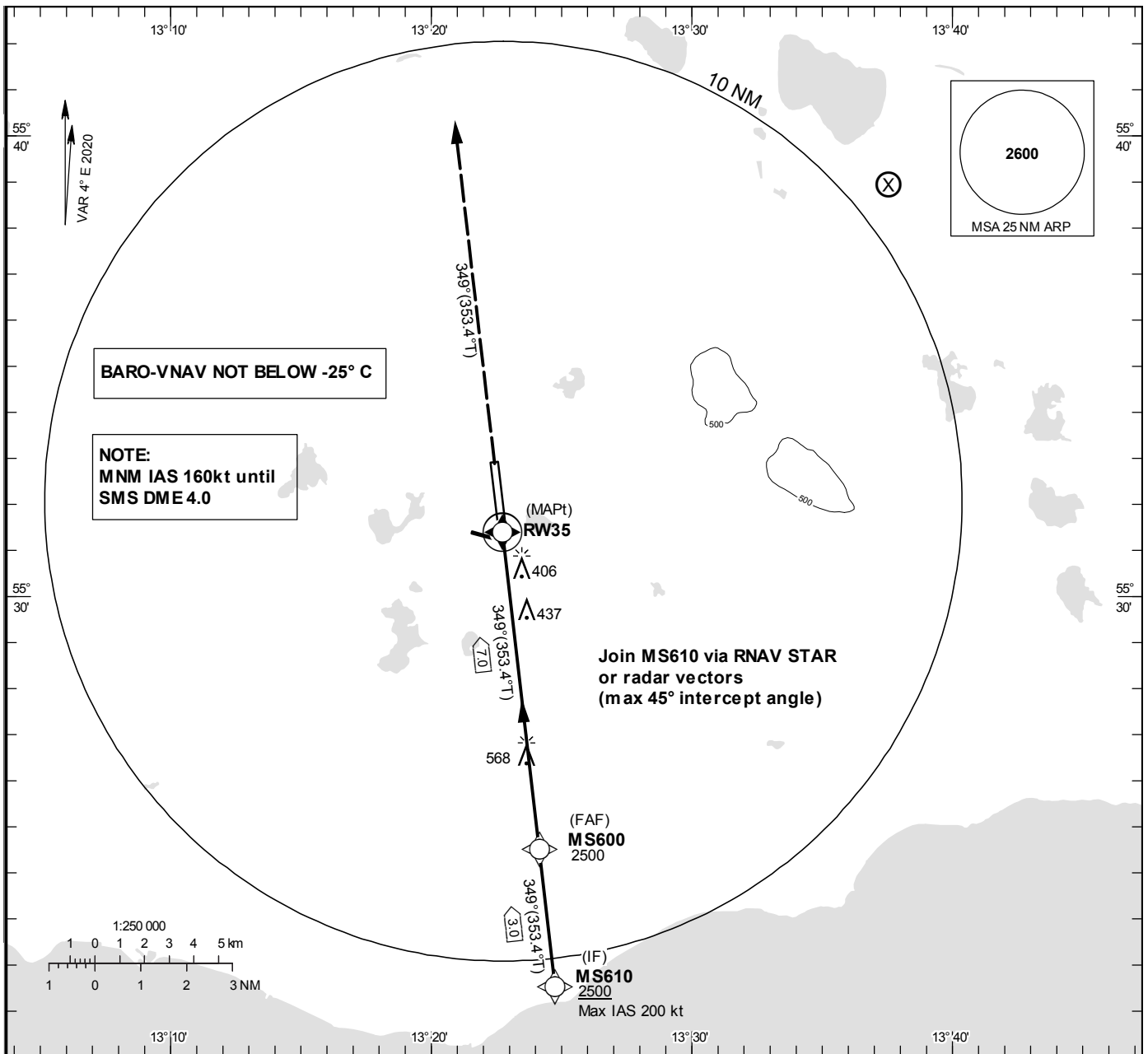


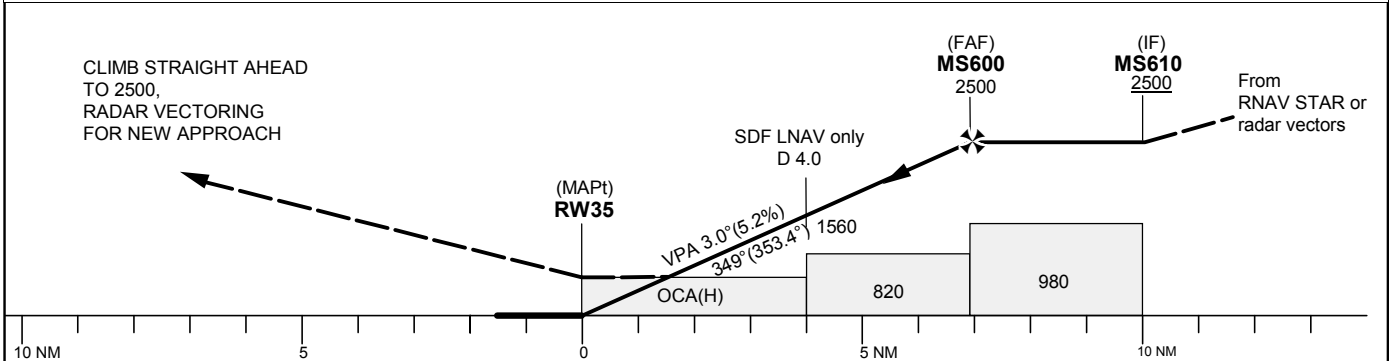
INSTRUMENT APPROACH CHART – ICAO
THR ELEV 236.3 ft, AD ELEV 237 ft
 OCH are related to THR.
 BRG are MAG (True).
 ALT, HGT and ELEV in ft.

STURUP TOWER	118.805
SWEDEN CONTROL	134.980
STURUP ATIS	129.280

RNP z RWY 35



TA 5000 ft AMSL RDH 50 ft



Cat of ACFT	OCA (H)				Final approach Dist to RWY 35	Distance FAF-MAPT 7.0 NM						
	A	B	C	D		6	5	4	3	2		
LNAV/VNAV	540(310)	550(320)	560(330)	570(340)	ALT	2200	1880	1560	1240	920		
LNAV	690(460)				GS	kt	80	100	120	140	160	180
					Rate of descent	ft/min	425	530	635	745	850	955

RNP z RWY 35 via RNAV STAR or radar vectors

Path Desc	Waypoint Identifier	Fly-over	Course °M(°T)	Dist (NM)	Turn Dir	Altitude	Speed	VPA/RDH	Rec Navaid	Navigation Specification
IF	MS610	-	-	-	-	+2500	-200	-	-	RNP APCH
TF	MS600	-	349°(353.4°)	3.0	-	@2500	-	-	-	RNP APCH
TF	RW35	Y	349°(353.4°)	7.0	-	@286	-	-3.0/50	-	RNP APCH
CA	-	-	349°(353.4°)	-	-	+2500	-	-	-	RNP APCH
VM	-	-	349°	-	-	-	-	-	-	RNP APCH